

Activity ID	Activity Name	OD	Start	Finish	2016			
					Apr	May	Jun	Jul
S4-TS-0070	Construction of Road Barrier and Backfilling to Formation Level from approx. -4.0mPD to +2.5mPD (approx. 23,975cu.m)	20d	30/05/16	19/06/16				Construction of Road Barrier and Backfill

Remaining Work	Summa...
Actual Work	
Summary Bar	
Critical Remaining Work	
Milestone	

CEDD CONTRACT NO. HK/2009/01  
 Wan Chai Development Phase II - Central-Wan Chai Bypass at HKCEC (Contract 1)  
WORKS PROGRAMME Rev.4 - 3 Month Programme starting from 22/04/16

Date	Revision	Checked	Appro...
15-Sep-15	Master Programme 6H		
22/04/16	Progress Updated on 22Apr 2016		

Activity ID	Activity Name	On Dur	Rem Dur	Scheduled/ Actual Start	Scheduled/ Actual Finish	Total Float	Calendar	2016																
								April				May				June				July				
								20	27	03	10	17	24	01	08	15	22	29	05	12	19	26	03	10
<b>Three Months Rolling Programme 2016-04-20 (dd 20-Apr-16)</b>																								
<b>Programme Milestones (Revised up to EOTO No.16 issued on 01-Dec-15)</b>																								
<b>Contractual Completion Dates</b>																								
KDC0170	Section 9B Works (2107 days) - CWB Structure (CH3400 Eastward) (5-Nov-15 Noon)	0	0		20-Apr-16*	-187	Calendar Day																	
KDC0180	Section 10 Works (2197 days) - CWB Structure (CH3400 Westward) (3-Feb-16 Noon)	0	0		20-Apr-16*	-86	Calendar Day																	
KDC0230	Section 13 Works (2331 days) - Remaining Works in Area 10 (15-Jun-16 Noon)	0	0		15-Jun-16*	0	Calendar Day																	
<b>Possession of Site</b>																								
PS0070	Possession of Portion 7 - Eastern Bulkhead and Area of CWB Tunnel (CH3792.35 to 3796) (14-Sep-15)	0	0	10-Mar-16 A			Calendar Day																	
PS0070a	Possession of Portion 7 - Remaining Part of Area 9 (14-Sep-15)	0	0	20-Apr-16*		-246	Calendar Day																	
<b>Preliminaries</b>																								
<b>Critical Submission &amp; Approval</b>																								
PRE-SUB-1010B	Temp Covered Walkway Cover System (PS30.5) - Design Approval by AECOM	34	38	29-Jan-15 A	23-May-16*	-271	Calendar Day																	
<b>CSD for CWB Tunnel</b>																								
PRE-CSD-5000B	Tunnel Portion 5 - Temp D-Wall Submission Approval by AECOM & GEO	68	46	15-Aug-13 A	30-May-16	-499	Calendar Day																	
PRE-CSD-5010B	Tunnel Portion 5 - ELS Submission Approval by AECOM & GEO	68	41	09-Apr-15 A	25-May-16	-660	Calendar Day																	
<b>Section 3 of the Works - Re-provisioning of Government Helipad and Public Toilet</b>																								
<b>Outstanding Works</b>																								
S3-0070-1499C	Reinstatement of armour rock along Expo Drive East	3	3	30-Apr-16*	02-May-16	0	Calendar Day																	
<b>Section 4A of the Works - Cooling Water Pumping System for Sun Hung Kai Centre (P8)</b>																								
<b>Cooling Mains Work above Tunnel Portion &amp; connecting to Pump Station</b>																								
S4A-0900A	Outstanding Works - re-construction of EVA	20	20	13-Jul-16	31-Jul-16	10	Calendar Day																	
<b>Section 4B of the Works - Cooling Water Pumping System for China Resources Building (P9)</b>																								
<b>Cooling Mains Work above Tunnel Portion &amp; connecting to Pump Station</b>																								
S4B-0900A	Outstanding Works - re-construction of EVA	20	20	13-Jul-16	31-Jul-16	35	Calendar Day																	
<b>Rectification of Road Reinstatement</b>																								
S4B-0910-100	Rectification of Road Reinstatement Works at Harbour Road	3	0	22-Mar-16 A	25-Mar-16 A		HK Working Day																	
S4B-0910-110	Rectification of Road Reinstatement Works at Tonnochy Road	3	3	26-Apr-16*	29-Apr-16	0	HK Working Day																	
S4B-0910-120	Rectification of Road Reinstatement Works at Hung Hing Road	12	0	29-Feb-16 A	08-Mar-16 A		HK Working Day																	
<b>Section 4C of the Works - Cooling Water Pumping System for Great Eagle Centre / Harbour Centre (P7)</b>																								
<b>Rectification of Road Reinstatement</b>																								
S4C-0910-100	Rectification of Road Reinstatement Works at Harbour Road	3	0	22-Mar-16 A	25-Mar-16 A		HK Working Day																	
S4C-0910-110	Rectification of Road Reinstatement Works at Tonnochy Road	3	3	26-Apr-16*	29-Apr-16	0	HK Working Day																	
S4C-0910-120	Rectification of Road Reinstatement Works at Hung Hing Road	3	0	29-Feb-16 A	08-Mar-16 A		HK Working Day																	
<b>Section 8A of the Works - Re-provisioning of Wan Chai Ferry Pier in Area 8</b>																								
<b>Outstanding Works</b>																								
S8A-OUT-1005	Clarify the alignment/details of permanent EVA to Ferry Pier and P7-P9 Pump Stations	101	28	29-Feb-16 A	14-May-16	-68	Calendar Day																	
S8A-OUT-1010	Divert temporary EVA to backfilled areas at Tunnel Portion 2	4	4	15-May-16	18-May-16	-68	Calendar Day																	
S8A-OUT-1020	Dismantle existing temporary EVA and relocate existing utilities	15	15	18-May-16	02-Jun-16	-51	HK Working Day																	
S8A-OUT-1030	Demolish the bulkhead wall underneath the temporary EVA	25	25	02-Jun-16	30-Jun-16	-51	HK Working Day																	
S8A-OUT-1040	Backfill and construct Permanent EVA, including relocation of fire hydrant near Ferry Pier	55	55	30-Jun-16	26-Aug-16	-51	HK Working Day																	
<b>Section 9B of the Works - CWB Tunnel Structure (CH3400 - CH3796)</b>																								
<b>Tunnel Portion 3 &amp; Tunnel Portion 4 (CH3630-CH3790)</b>																								
<b>CWB Structural Works</b>																								
S9B-T34-3104	Carry out drilling works and saw cut on the bulkhead wall at eastern tunnel end	80	68	15-Mar-16 A	02-Jul-16	-519	HK Working Day																	
S9B-T34-3105	Remove formwork and falsework from Bay 16 prior to constructing top slab of Bay 16	15	15	22-Jun-16	08-Jul-16	-519	HK Working Day																	
S9B-T34-3200	Remaining works at HY/2009/15 Interface for Section 9B Completion - Structural Stitching Works	20	20	08-Jul-16	29-Jul-16	-262	HK Working Day																	
S9B-T34-4000	ELS Removal - Bay 1 to Bay 2 (2 Layers)	8	2	13-Apr-16 A	21-Apr-16	-542	Calendar Day																	
S9B-T34-4200	ELS Removal - Bay 7 to Bay 12 (2 Layers)	8	0	05-Mar-16 A	21-Mar-16 A		Calendar Day																	
S9B-T34-4300	ELS Removal - Bay 13 to Bay 15 (2 Layers)	8	0	18-Mar-16 A	05-Apr-16 A		Calendar Day																	
S9B-T34-4400	ELS Removal - Bay 16 to Bay 17 (2 Layers)	8	0	07-Apr-16 A	11-Apr-16 A		Calendar Day																	
S9B-T34-6200	Roof Waterproofing - Bay 9 to Bay 13	8	8	12-Jul-16	18-Jul-16	-431	Calendar Day																	
<b>Bay 1</b>																								
S9B-T34-B1-1020	Base Slab - Rebar Fixing	11	0	15-Mar-16 A	30-Mar-16 A		Calendar Day																	

- ◆ Milestone
- ◆ Critical Milestones
- █ Current Works
- █ Critical Works
- █ Remaining Level of Effort

**CHUN WO - CRGL  
JOINT VENTURE**

**CEDD CONTRACT NO. HK/2009/02  
WD II - Central Wanchai Bypass at Wan Chai East (Contract 2)  
3-MONTH ROLLING PROGRAMME (dd 20-Apr-16)**

Date	Revision	Checked	Approved
20-Apr-16			









Activity ID	Activity Name	On Dur	Rem Dur	Scheduled/ Actual Start	Scheduled/ Actual Finish	Total Float	Calendar	2016																	
								April						May						June					
								20	27	03	10	17	24	01	08	15	22	29	05	12	19	26	03	10	17
S9B-T34-B9-1160	Wall (Middle) - Formwork	2	0	21-Mar-16 A	22-Mar-16 A		Calendar Day	■ Wall (Middle) - Formwork																	
S9B-T34-B9-1170	Wall (Middle) - Concrete	1	0	23-Mar-16 A	23-Mar-16 A		Calendar Day	■ Wall (Middle) - Concrete																	
S9B-T34-B9-1180	Wall (Middle) - Curing & Formwork Dismantling	3	0	24-Mar-16 A	26-Mar-16 A		Calendar Day	■ Wall (Middle) - Curing & Formwork Dismantling																	
S9B-T34-B9-1185	Construct Roadside Barriers	8	8	27-Mar-16 A	27-Apr-16	-332	HK Working Day	■ Construct Roadside Barriers, Construct Roadside Barriers																	
S9B-T34-B9-1190	OHVD Base Slab (North) - Scaffolding Erection	8	8	03-May-16	09-May-16	-422	Calendar Day	■ OHVD Base Slab (North) - Scaffolding Erection, OHVD Base Slab (North) - Scaffolding Erection																	
S9B-T34-B9-1200	OHVD Base Slab (North) - Formwork & Rebar Fixing	8	8	10-May-16	16-May-16	-422	Calendar Day	■ OHVD Base Slab (North) - Formwork & Rebar Fixing, OHVD Base Slab (North) - Formwork & Rebar Fixing																	
S9B-T34-B9-1210	OHVD Base Slab (North) - Concrete & Curing	16	16	17-May-16	30-May-16	-422	Calendar Day	■ OHVD Base Slab (North) - Concrete & Curing, OHVD Base Slab (North) - Concrete & Curing																	
S9B-T34-B9-1220	OHVD Base Slab (North) - Hanger Wall & Scaffolding to Roof	8	8	31-May-16	06-Jun-16	-422	Calendar Day	■ OHVD Base Slab (North) - Hanger Wall & Scaffolding to Roof, OHVD Base Slab (North) - Hanger Wall & Scaffolding to Roof																	
S9B-T34-B9-1230	OHVD Base Slab (South) - Scaffolding Erection	8	8	03-May-16	09-May-16	-422	Calendar Day	■ OHVD Base Slab (South) - Scaffolding Erection, OHVD Base Slab (South) - Scaffolding Erection																	
S9B-T34-B9-1240	OHVD Base Slab (South) - Formwork & Rebar Fixing	8	8	10-May-16	16-May-16	-422	Calendar Day	■ OHVD Base Slab (South) - Formwork & Rebar Fixing, OHVD Base Slab (South) - Formwork & Rebar Fixing																	
S9B-T34-B9-1250	OHVD Base Slab (South) - Concrete & Curing	16	16	17-May-16	30-May-16	-422	Calendar Day	■ OHVD Base Slab (South) - Concrete & Curing, OHVD Base Slab (South) - Concrete & Curing																	
S9B-T34-B9-1260	OHVD Base Slab (South) - Hanger Wall & Scaffolding to Roof	8	8	31-May-16	06-Jun-16	-422	Calendar Day	■ OHVD Base Slab (South) - Hanger Wall & Scaffolding to Roof, OHVD Base Slab (South) - Hanger Wall & Scaffolding to Roof																	
S9B-T34-B9-1270	Roof - Waterproofing	8	8	31-May-16	06-Jun-16	-422	Calendar Day	■ Roof - Waterproofing, Roof - Waterproofing																	
S9B-T34-B9-1280	Roof - Rebar Fixing & Formwork	14	14	07-Jun-16	18-Jun-16	-422	Calendar Day	■ Roof - Rebar Fixing & Formwork, Roof - Rebar Fixing & Formwork																	
S9B-T34-B9-1290	Roof - Concrete	1	1	19-Jun-16	19-Jun-16	-422	Calendar Day	■ Roof - Concrete, Roof - Concrete																	
S9B-T34-B9-1300	Roof - Curing	16	16	20-Jun-16	03-Jul-16	-422	Calendar Day	■ Roof - Curing, Roof - Curing																	
S9B-T34-B9-1310	Roof - Scaffolding Dismantling	8	8	04-Jul-16	10-Jul-16	-279	Calendar Day	■ Roof - Scaffolding Dismantling, Roof - Scaffolding Dismantling																	
<b>Bay 10</b>																									
S9B-T34-B10-1050	Wall (North) - Waterproofing & Working Platform	5	5	20-Apr-16	23-Apr-16	-422	Calendar Day	■ Wall (North) - Waterproofing & Working Platform, Wall (North) - Waterproofing & Working Platform																	
S9B-T34-B10-1060	Wall (North) - Rebar Fixing	3	3	24-Apr-16	26-Apr-16	-422	Calendar Day	■ Wall (North) - Rebar Fixing, Wall (North) - Rebar Fixing																	
S9B-T34-B10-1070	Wall (North) - Formwork	2	2	03-May-16	04-May-16	-428	Calendar Day	■ Wall (North) - Formwork, Wall (North) - Formwork																	
S9B-T34-B10-1080	Wall (North) - Concrete	1	1	05-May-16	05-May-16	-428	Calendar Day	■ Wall (North) - Concrete, Wall (North) - Concrete																	
S9B-T34-B10-1090	Wall (North) - Curing & Formwork Dismantling	3	3	06-May-16	08-May-16	-428	Calendar Day	■ Wall (North) - Curing & Formwork Dismantling, Wall (North) - Curing & Formwork Dismantling																	
S9B-T34-B10-1100	Wall (South) - Waterproofing & Working Platform	3	0	04-Apr-16 A	06-Apr-16 A		Calendar Day	■ Wall (South) - Waterproofing & Working Platform																	
S9B-T34-B10-1110	Wall (South) - Rebar Fixing	3	0	07-Apr-16 A	09-Apr-16 A		Calendar Day	■ Wall (South) - Rebar Fixing																	
S9B-T34-B10-1120	Wall (South) - Formwork	2	0	10-Apr-16 A	11-Apr-16 A		Calendar Day	■ Wall (South) - Formwork																	
S9B-T34-B10-1130	Wall (South) - Concrete	1	0	12-Apr-16 A	12-Apr-16 A		Calendar Day	■ Wall (South) - Concrete																	
S9B-T34-B10-1150	Wall (Middle) - Rebar Fixing & Working Platform	5	0	18-Mar-16 A	22-Mar-16 A		Calendar Day	■ Wall (Middle) - Rebar Fixing & Working Platform																	
S9B-T34-B10-1160	Wall (Middle) - Formwork	2	0	23-Mar-16 A	24-Mar-16 A		Calendar Day	■ Wall (Middle) - Formwork																	
S9B-T34-B10-1170	Wall (Middle) - Concrete	1	0	25-Mar-16 A	25-Mar-16 A		Calendar Day	■ Wall (Middle) - Concrete																	
S9B-T34-B10-1180	Wall (Middle) - Curing & Formwork Dismantling	3	0	26-Mar-16 A	28-Mar-16 A		Calendar Day	■ Wall (Middle) - Curing & Formwork Dismantling																	
S9B-T34-B10-1185	Construct Roadside Barriers	8	8	29-Mar-16 A	27-Apr-16	-332	HK Working Day	■ Construct Roadside Barriers, Construct Roadside Barriers																	
S9B-T34-B10-1190	OHVD Base Slab (North) - Scaffolding Erection	8	8	09-May-16	15-May-16	-428	Calendar Day	■ OHVD Base Slab (North) - Scaffolding Erection, OHVD Base Slab (North) - Scaffolding Erection																	
S9B-T34-B10-1200	OHVD Base Slab (North) - Formwork & Rebar Fixing	8	8	16-May-16	22-May-16	-428	Calendar Day	■ OHVD Base Slab (North) - Formwork & Rebar Fixing, OHVD Base Slab (North) - Formwork & Rebar Fixing																	
S9B-T34-B10-1210	OHVD Base Slab (North) - Concrete & Curing	16	16	23-May-16	05-Jun-16	-428	Calendar Day	■ OHVD Base Slab (North) - Concrete & Curing, OHVD Base Slab (North) - Concrete & Curing																	
S9B-T34-B10-1220	OHVD Base Slab (North) - Hanger Wall & Scaffolding to Roof	8	8	06-Jun-16	12-Jun-16	-428	Calendar Day	■ OHVD Base Slab (North) - Hanger Wall & Scaffolding to Roof, OHVD Base Slab (North) - Hanger Wall & Scaffolding to Roof																	
S9B-T34-B10-1230	OHVD Base Slab (South) - Scaffolding Erection	8	8	09-May-16	15-May-16	-428	Calendar Day	■ OHVD Base Slab (South) - Scaffolding Erection, OHVD Base Slab (South) - Scaffolding Erection																	
S9B-T34-B10-1240	OHVD Base Slab (South) - Formwork & Rebar Fixing	8	8	16-May-16	22-May-16	-428	Calendar Day	■ OHVD Base Slab (South) - Formwork & Rebar Fixing, OHVD Base Slab (South) - Formwork & Rebar Fixing																	
S9B-T34-B10-1250	OHVD Base Slab (South) - Concrete & Curing	16	16	23-May-16	05-Jun-16	-428	Calendar Day	■ OHVD Base Slab (South) - Concrete & Curing, OHVD Base Slab (South) - Concrete & Curing																	
S9B-T34-B10-1260	OHVD Base Slab (South) - Hanger Wall & Scaffolding to Roof	8	8	06-Jun-16	12-Jun-16	-428	Calendar Day	■ OHVD Base Slab (South) - Hanger Wall & Scaffolding to Roof, OHVD Base Slab (South) - Hanger Wall & Scaffolding to Roof																	
S9B-T34-B10-1270	Roof - Waterproofing	8	8	06-Jun-16	12-Jun-16	-428	Calendar Day	■ Roof - Waterproofing, Roof - Waterproofing																	
S9B-T34-B10-1280	Roof - Rebar Fixing & Formwork	14	14	13-Jun-16	24-Jun-16	-428	Calendar Day	■ Roof - Rebar Fixing & Formwork, Roof - Rebar Fixing & Formwork																	
S9B-T34-B10-1290	Roof - Concrete	1	1	25-Jun-16	25-Jun-16	-428	Calendar Day	■ Roof - Concrete, Roof - Concrete																	
S9B-T34-B10-1300	Roof - Curing	16	16	26-Jun-16	09-Jul-16	-428	Calendar Day	■ Roof - Curing, Roof - Curing																	
S9B-T34-B10-1310	Roof - Scaffolding Dismantling	8	8	10-Jul-16	16-Jul-16	-286	Calendar Day	■ Roof - Scaffolding Dismantling, Roof - Scaffolding Dismantling																	
<b>Bay 11</b>																									
S9B-T34-B11-1050	Wall (North) - Waterproofing & Working Platform	5	5	20-Apr-16	23-Apr-16	-635	Calendar Day	■ Wall (North) - Waterproofing & Working Platform, Wall (North) - Waterproofing & Working Platform																	
S9B-T34-B11-1060	Wall (North) - Rebar Fixing	3	3	24-Apr-16	26-Apr-16	-635	Calendar Day	■ Wall (North) - Rebar Fixing, Wall (North) - Rebar Fixing																	
S9B-T34-B11-1070	Wall (North) - Formwork	2	2	27-Apr-16	28-Apr-16	-635	Calendar Day	■ Wall (North) - Formwork, Wall (North) - Formwork																	
S9B-T34-B11-1080	Wall (North) - Concrete	1	1	29-Apr-16	29-Apr-16	-635	Calendar Day	■ Wall (North) - Concrete, Wall (North) - Concrete																	
S9B-T34-B11-1090	Wall (North) - Curing & Formwork Dismantling	3	3	30-Apr-16	02-May-16	-635	Calendar Day	■ Wall (North) - Curing & Formwork Dismantling, Wall (North) - Curing & Formwork Dismantling																	
S9B-T34-B11-1100	Wall (South) - Waterproofing & Working Platform	3	3	20-Apr-16	22-Apr-16	-634	Calendar Day	■ Wall (South) - Waterproofing & Working Platform, Wall (South) - Waterproofing & Working Platform																	
S9B-T34-B11-1110	Wall (South) - Rebar Fixing	3	3	23-Apr-16	25-Apr-16	-634	Calendar Day	■ Wall (South) - Rebar Fixing, Wall (South) - Rebar Fixing																	
S9B-T34-B11-1120	Wall (South) - Formwork	2	2	27-Apr-16	28-Apr-16	-635	Calendar Day	■ Wall (South) - Formwork, Wall (South) - Formwork																	
S9B-T34-B11-1130	Wall (South) - Concrete	1	1	29-Apr-16	29-Apr-16	-635	Calendar Day	■ Wall (South) - Concrete, Wall (South) - Concrete																	
S9B-T34-B11-1140	Wall (South) - Curing & Formwork Dismantling	3	3	30-Apr-16	02-May-16	-635	Calendar Day	■ Wall (South) - Curing & Formwork Dismantling, Wall (South) - Curing & Formwork Dismantling																	

- ◆ Milestone
- ◆ Critical Milestones
- Current Works
- Critical Works
- Remaining Level of Effort

**CHUN WO - CRGL**  
**JOINT VENTURE**

**CEDD CONTRACT NO. HK/2009/02**  
**WD II - Central Wanchai Bypass at Wan Chai East (Contract 2)**  
**3-MONTH ROLLING PROGRAMME (dd 20-Apr-16)**

Date	Revision	Checked	Approved
20-Apr-16			



Activity ID	Activity Name	On Dur	Rem Dur	Scheduled/ Actual Start	Scheduled/ Actual Finish	Total Float	Calendar	2016																							
								April						May						June						July					
								20	27	03	10	17	24	01	08	15	22	29	05	12	19	26	03	10	17						
S9B-T34-B11-1150	Wall (Middle) - Rebar Fixing & Working Platform	5	0	21-Mar-16 A	25-Mar-16 A		Calendar Day	Wall (Middle) - Rebar Fixing & Working Platform																							
S9B-T34-B11-1160	Wall (Middle) - Formwork	2	0	26-Mar-16 A	27-Mar-16 A		Calendar Day	Wall (Middle) - Formwork																							
S9B-T34-B11-1170	Wall (Middle) - Concrete	1	0	28-Mar-16 A	28-Mar-16 A		Calendar Day	Wall (Middle) - Concrete																							
S9B-T34-B11-1180	Wall (Middle) - Curing & Formwork Dismantling	3	0	29-Mar-16 A	31-Mar-16 A		Calendar Day	Wall (Middle) - Curing & Formwork Dismantling																							
S9B-T34-B11-1185	Construct Roadside Barriers	8	8	03-May-16	10-May-16	-504	HK Working Day	Construct Roadside Barriers, Construct Roadside Barriers																							
S9B-T34-B11-1190	OHVD Base Slab (North) - Scaffolding Erection	8	8	11-May-16	17-May-16	-635	Calendar Day	OHVD Base Slab (North) - Scaffolding Erection, OHVD Base Slab (North) - Scaffolding Erection																							
S9B-T34-B11-1200	OHVD Base Slab (North) - Formwork & Rebar Fixing	8	8	18-May-16	24-May-16	-635	Calendar Day	OHVD Base Slab (North) - Formwork & Rebar Fixing, OHVD Base Slab (North) - Formwork & Rebar Fixing																							
S9B-T34-B11-1210	OHVD Base Slab (North) - Concrete & Curing	16	16	25-May-16	07-Jun-16	-635	Calendar Day	OHVD Base Slab (North) - Concrete & Curing, OHVD Base Slab (North) - Concrete & Curing																							
S9B-T34-B11-1220	OHVD Base Slab (North) - Hanger Wall & Scaffolding to Roof	8	8	08-Jun-16	14-Jun-16	-635	Calendar Day	OHVD Base Slab (North) - Hanger Wall & Scaffolding to Roof, OHVD Base Slab (North) - Hanger Wall & Scaffolding to Roof																							
S9B-T34-B11-1230	OHVD Base Slab (South) - Scaffolding Erection	8	8	11-May-16	17-May-16	-635	Calendar Day	OHVD Base Slab (South) - Scaffolding Erection, OHVD Base Slab (South) - Scaffolding Erection																							
S9B-T34-B11-1240	OHVD Base Slab (South) - Formwork & Rebar Fixing	8	8	18-May-16	24-May-16	-635	Calendar Day	OHVD Base Slab (South) - Formwork & Rebar Fixing, OHVD Base Slab (South) - Formwork & Rebar Fixing																							
S9B-T34-B11-1250	OHVD Base Slab (South) - Concrete & Curing	16	16	25-May-16	07-Jun-16	-635	Calendar Day	OHVD Base Slab (South) - Concrete & Curing, OHVD Base Slab (South) - Concrete & Curing																							
S9B-T34-B11-1260	OHVD Base Slab (South) - Hanger Wall & Scaffolding to Roof	8	8	08-Jun-16	14-Jun-16	-635	Calendar Day	OHVD Base Slab (South) - Hanger Wall & Scaffolding to Roof, OHVD Base Slab (South) - Hanger Wall & Scaffolding to Roof																							
S9B-T34-B11-1270	Roof - Waterproofing	8	8	08-Jun-16	14-Jun-16	-635	Calendar Day	Roof - Waterproofing, Roof - Waterproofing																							
S9B-T34-B11-1280	Roof - Rebar Fixing & Formwork	14	14	15-Jun-16	26-Jun-16	-635	Calendar Day	Roof - Rebar Fixing & Formwork, Roof - Rebar Fixing & Formwork																							
S9B-T34-B11-1290	Roof - Concrete	1	1	27-Jun-16	27-Jun-16	-515	Calendar Day	Roof - Concrete, Roof - Concrete																							
S9B-T34-B11-1300	Roof - Curing	16	16	28-Jun-16	11-Jul-16	-515	Calendar Day	Roof - Curing, Roof - Curing																							
S9B-T34-B11-1310	Roof - Scaffolding Dismantling	8	8	12-Jul-16	18-Jul-16	-288	Calendar Day	Roof - Scaffolding Dismantling, Roof - Scaffolding Dismantling																							
<b>Bay 12</b>																															
S9B-T34-B12-1185	Construct Roadside Barriers	8	8	03-May-16	10-May-16	-504	HK Working Day	Construct Roadside Barriers, Construct Roadside Barriers																							
S9B-T34-B12-1270	Roof - Waterproofing	8	8	08-Jun-16	14-Jun-16	-635	Calendar Day	Roof - Waterproofing, Roof - Waterproofing																							
S9B-T34-B12-1280	Roof - Rebar Fixing & Formwork	14	14	15-Jun-16	26-Jun-16	-635	Calendar Day	Roof - Rebar Fixing & Formwork, Roof - Rebar Fixing & Formwork																							
S9B-T34-B12-1290	Roof - Concrete	1	1	27-Jun-16	27-Jun-16	-635	Calendar Day	Roof - Concrete, Roof - Concrete																							
S9B-T34-B12-1300	Roof - Curing	16	16	28-Jun-16	11-Jul-16	-635	Calendar Day	Roof - Curing, Roof - Curing																							
S9B-T34-B12-1310	Roof - Scaffolding Dismantling	8	8	12-Jul-16	19-Jul-16	-288	Calendar Day	Roof - Scaffolding Dismantling, Roof - Scaffolding Dismantling																							
<b>Bay 13</b>																															
S9B-T34-B13-1050	Wall (North) - Waterproofing & Working Platform	5	5	20-Apr-16	23-Apr-16	-431	Calendar Day	Wall (North) - Waterproofing & Working Platform, Wall (North) - Waterproofing & Working Platform																							
S9B-T34-B13-1060	Wall (North) - Rebar Fixing	3	3	24-Apr-16	26-Apr-16	-431	Calendar Day	Wall (North) - Rebar Fixing, Wall (North) - Rebar Fixing																							
S9B-T34-B13-1070	Wall (North) - Formwork	2	2	27-Apr-16	28-Apr-16	-431	Calendar Day	Wall (North) - Formwork, Wall (North) - Formwork																							
S9B-T34-B13-1080	Wall (North) - Concrete	1	1	29-Apr-16	29-Apr-16	-431	Calendar Day	Wall (North) - Concrete, Wall (North) - Concrete																							
S9B-T34-B13-1090	Wall (North) - Curing & Formwork Dismantling	3	3	30-Apr-16	02-May-16	-431	Calendar Day	Wall (North) - Curing & Formwork Dismantling, Wall (North) - Curing & Formwork Dismantling																							
S9B-T34-B13-1100	Wall (South) - Waterproofing & Working Platform	3	3	20-Apr-16	22-Apr-16	-429	Calendar Day	Wall (South) - Waterproofing & Working Platform, Wall (South) - Waterproofing & Working Platform																							
S9B-T34-B13-1110	Wall (South) - Rebar Fixing	3	3	23-Apr-16	25-Apr-16	-429	Calendar Day	Wall (South) - Rebar Fixing, Wall (South) - Rebar Fixing																							
S9B-T34-B13-1120	Wall (South) - Formwork	2	2	26-Apr-16	27-Apr-16	-429	Calendar Day	Wall (South) - Formwork, Wall (South) - Formwork																							
S9B-T34-B13-1130	Wall (South) - Concrete	1	1	28-Apr-16	28-Apr-16	-429	Calendar Day	Wall (South) - Concrete, Wall (South) - Concrete																							
S9B-T34-B13-1140	Wall (South) - Curing & Formwork Dismantling	3	3	29-Apr-16	01-May-16	-429	Calendar Day	Wall (South) - Curing & Formwork Dismantling, Wall (South) - Curing & Formwork Dismantling																							
S9B-T34-B13-1150	Wall (Middle) - Rebar Fixing & Working Platform	5	0	05-Apr-16 A	09-Apr-16 A		Calendar Day	Wall (Middle) - Rebar Fixing & Working Platform																							
S9B-T34-B13-1160	Wall (Middle) - Formwork	2	2	10-Apr-16 A	21-Apr-16	-423	Calendar Day	Wall (Middle) - Formwork, Wall (Middle) - Formwork																							
S9B-T34-B13-1170	Wall (Middle) - Concrete	1	1	22-Apr-16	22-Apr-16	-423	Calendar Day	Wall (Middle) - Concrete, Wall (Middle) - Concrete																							
S9B-T34-B13-1180	Wall (Middle) - Curing & Formwork Dismantling	3	3	23-Apr-16	25-Apr-16	-423	Calendar Day	Wall (Middle) - Curing & Formwork Dismantling, Wall (Middle) - Curing & Formwork Dismantling																							
S9B-T34-B13-1185	Construct Roadside Barriers	8	8	03-May-16	10-May-16	-343	HK Working Day	Construct Roadside Barriers, Construct Roadside Barriers																							
S9B-T34-B13-1190	OHVD Base Slab (North) - Scaffolding Erection	8	8	11-May-16	17-May-16	-431	Calendar Day	OHVD Base Slab (North) - Scaffolding Erection, OHVD Base Slab (North) - Scaffolding Erection																							
S9B-T34-B13-1200	OHVD Base Slab (North) - Formwork & Rebar Fixing	8	8	18-May-16	24-May-16	-431	Calendar Day	OHVD Base Slab (North) - Formwork & Rebar Fixing, OHVD Base Slab (North) - Formwork & Rebar Fixing																							
S9B-T34-B13-1210	OHVD Base Slab (North) - Concrete & Curing	16	16	25-May-16	07-Jun-16	-431	Calendar Day	OHVD Base Slab (North) - Concrete & Curing, OHVD Base Slab (North) - Concrete & Curing																							
S9B-T34-B13-1220	OHVD Base Slab (North) - Hanger Wall & Scaffolding to Roof	8	8	08-Jun-16	14-Jun-16	-431	Calendar Day	OHVD Base Slab (North) - Hanger Wall & Scaffolding to Roof, OHVD Base Slab (North) - Hanger Wall & Scaffolding to Roof																							
S9B-T34-B13-1230	OHVD Base Slab (South) - Scaffolding Erection	8	8	11-May-16	17-May-16	-431	Calendar Day	OHVD Base Slab (South) - Scaffolding Erection, OHVD Base Slab (South) - Scaffolding Erection																							
S9B-T34-B13-1240	OHVD Base Slab (South) - Formwork & Rebar Fixing	8	8	18-May-16	24-May-16	-431	Calendar Day	OHVD Base Slab (South) - Formwork & Rebar Fixing, OHVD Base Slab (South) - Formwork & Rebar Fixing																							
S9B-T34-B13-1250	OHVD Base Slab (South) - Concrete & Curing	16	16	25-May-16	07-Jun-16	-431	Calendar Day	OHVD Base Slab (South) - Concrete & Curing, OHVD Base Slab (South) - Concrete & Curing																							
S9B-T34-B13-1260	OHVD Base Slab (South) - Hanger Wall & Scaffolding to Roof	8	8	08-Jun-16	14-Jun-16	-431	Calendar Day	OHVD Base Slab (South) - Hanger Wall & Scaffolding to Roof, OHVD Base Slab (South) - Hanger Wall & Scaffolding to Roof																							
S9B-T34-B13-1270	Roof - Waterproofing	8	8	08-Jun-16	14-Jun-16	-431	Calendar Day	Roof - Waterproofing, Roof - Waterproofing																							
S9B-T34-B13-1280	Roof - Rebar Fixing & Formwork	14	14	15-Jun-16	26-Jun-16	-431	Calendar Day	Roof - Rebar Fixing & Formwork, Roof - Rebar Fixing & Formwork																							
S9B-T34-B13-1290	Roof - Concrete	1	1	27-Jun-16	27-Jun-16	-431	Calendar Day	Roof - Concrete, Roof - Concrete																							
<b>Bay 14</b>																															
S9B-T34-B14-1185	Construct Roadside Barriers	8	8	03-May-16	10-May-16	-343	HK Working Day	Construct Roadside Barriers, Construct Roadside Barriers																							
S9B-T34-B14-1270	Roof - Waterproofing	8	8	08-Jun-16	14-Jun-16	-410	Calendar Day	Roof - Waterproofing, Roof - Waterproofing																							
S9B-T34-B14-1280	Roof - Rebar Fixing & Formwork	14	14	15-Jun-16	26-Jun-16	-410	Calendar Day	Roof - Rebar Fixing & Formwork, Roof - Rebar Fixing & Formwork																							

- ◆ Milestone
- ◆ Critical Milestones
- █ Current Works
- █ Critical Works
- █ Remaining Level of Effort

**CHUN WO - CRGL**  
**JOINT VENTURE**

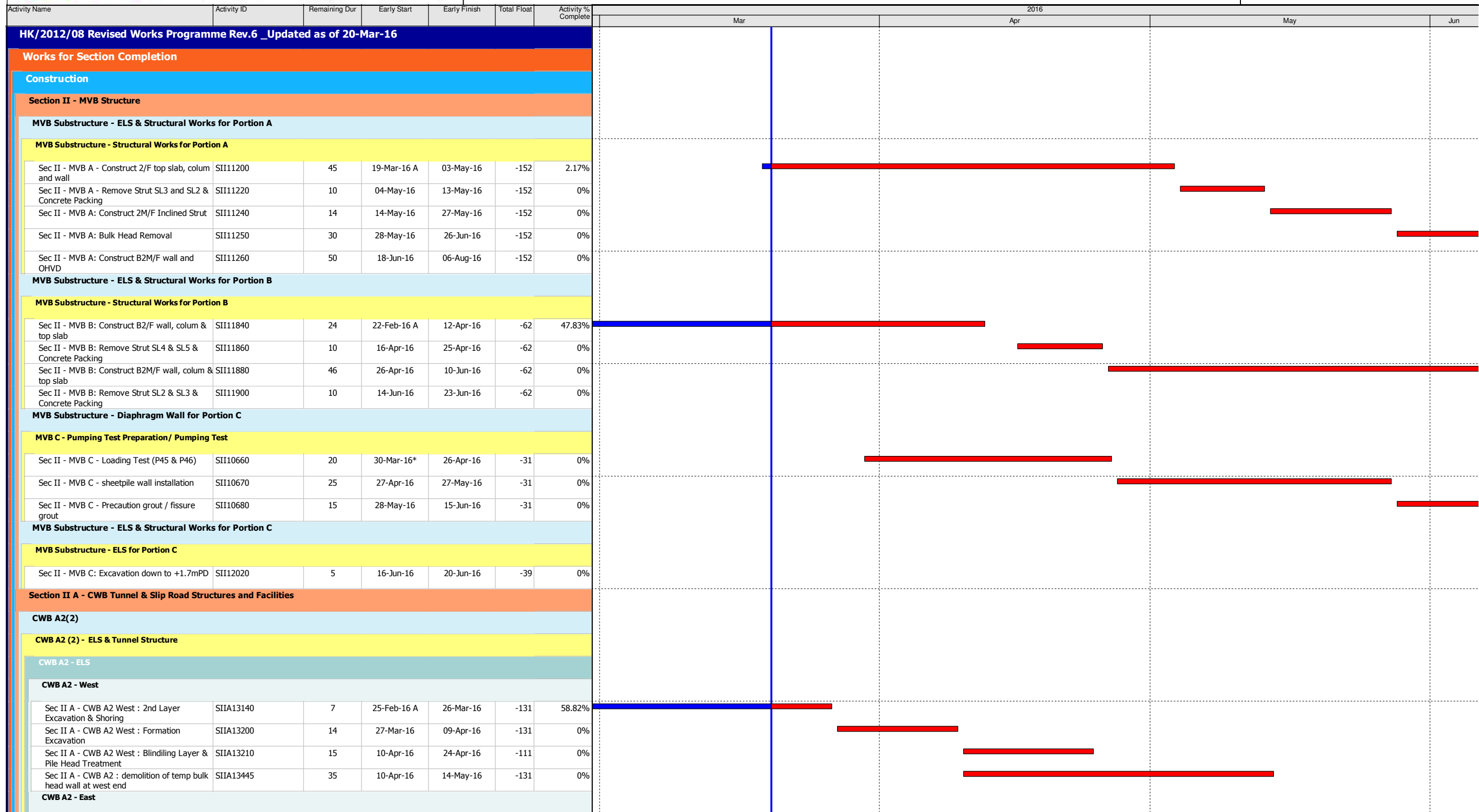
**CEDD CONTRACT NO. HK/2009/02**  
**WD II - Central Wanchai Bypass at Wan Chai East (Contract 2)**  
**3-MONTH ROLLING PROGRAMME (dd 20-Apr-16)**

Date	Revision	Checked	Approved
20-Apr-16			









Data Date: 20-Mar-16

- ◆ Current Milestone
- Actual Work
- Critical Remaining Work
- Remaining Work
- Remaining Level of Effort

**3-Months Rolling Programme for Non-CRIII Area (Ref. to DWP Rev.6)**

Date	Revision	Checked	Approved
30-Mar-16	Rev. 1		



Activity Name	Activity ID	Remaining Dur	Early Start	Early Finish	Total Float	Activity % Complete	2016			
							Mar	Apr	May	Jun
Sec II A - CWB A2 East : 2nd Layer Excavation & Shoring	SIIA13360	7	02-Mar-16 A	26-Mar-16	-112	65%				
Sec II A - CWB A2 East : Formation Excavation	SIIA13400	14	31-Mar-16	13-Apr-16	-116	0%				
Sec IIA - CWB A2 East : Blinding Layer & Pile Heads Treatment	SIIA13420	12	14-Apr-16	27-Apr-16	-92	0%				
Sec IIA - CWB A2 : demolition of temp bulk head wall at East end	SIIA13448	30	24-Mar-16	22-Apr-16	-95	0%				
<b>CWB A2 - Tunnel Structure</b>										
Sec II A - CWB A2 : base, wall, OHVD & roof (bay 1 - Adjacent to Zone A1)	SIIA11700	60	15-May-16	13-Jul-16	-131	0%				
Sec II A - CWB A2 : base, wall, OHVD & roof (bay 2)	SIIA11740	60	29-May-16	27-Jul-16	-131	0%				
Sec II A - CWB A2 : base, wall, OHVD & roof (bay 3)	SIIA12492	60	15-May-16	13-Jul-16	-131	0%				
Sec II A - CWB A2 : base, wall, OHVD & roof (bay 4)	SIIA12494	60	29-May-16	27-Jul-16	-131	0%				
<b>CWB B &amp; A2(1))</b>										
<b>CWB B - ELS &amp; Tunnel Structure</b>										
<b>CWB B - ELS</b>										
<b>CWB B - ELS Stage 1 - West</b>										
Sec II A - CWB B West: 3rd Layer Excavation & Shoring	SIIA13562	5	21-Jan-16 A	24-Mar-16	-125	0%				
Sec II A - CWB B West: 4th Layer Excavation & Shoring	SIIA13582	25	25-Mar-16	18-Apr-16	-125	0%				
Sec II A - CWB B West: Formation Excavation	SIIA13602	4	19-Apr-16	22-Apr-16	-125	0%				
Sec II A - CWB B West: Blinding Layer & Pile Head Treatment	SIIA13622	14	19-Apr-16	02-May-16	-125	0%				
<b>CWB B - ELS Stage 2 - Concrete Plug</b>										
Sec II A - CWB CP & WP: Wet Excavation & Temporary Works	SIIA 15120	32	27-Jan-16 A	20-Apr-16	-76	0%				
Sec II A - CWB CP & WP: Treatment to Concrete Plug	SIIA 15160	12	21-Apr-16	02-May-16	-76	0%				
Sec II A - CWB B: Demolish Sheetpile Bulkhead wall at Concrete Plug	SIIA 15170	14	03-May-16	16-May-16	-76	0%				
Sec II A - CWB CP & WP: Blinding Layer & Cutting of C4 Bulkhead	SIIA 15180	12	17-May-16	28-May-16	-76	0%				
<b>CWB B - Tunnel Structure</b>										
Sec II A - CWB B: base, wall, OHVD & roof (bay 1 - Adjacent to Zone A2)	SIIA13560	85	21-Apr-16	14-Jul-16	-125	0%				
Sec II A - CWB B: base, wall, OHVD & roof (bay 2)	SIIA13600	70	28-Apr-16	06-Jul-16	-125	0%				
Sec II A - CWB B: base, wall, OHVD & roof (bay 3 - Adjacent to C4)	SIIA13660	65	09-May-16	12-Jul-16	-125	0%				
<b>CWB C (W)</b>										
<b>CWB C(W) - ELS &amp; Tunnel Structure</b>										
<b>CWB C(W) - ELS</b>										
<b>CWB C(W) - ELS Stage 1 East</b>										
Sec II A - CWB CW East: 3rd Layer Excavation & Shoring	SIIA12121	18	20-Mar-16	06-Apr-16	-102	0%				
Sec II A - CWB CW East: Formation Excavation	SIIA12141	4	07-Apr-16	10-Apr-16	-102	0%				
Sec II A - CWB CW East: Blinding Layer & Barrette Trimming	SIIA12161	9	11-Apr-16	19-Apr-16	-102	0%				
Sec II A - CWB CW: Demolish Bulkhead at MVB (adj. to bay 3)	SIIA15540	26	20-Apr-16	15-May-16	-102	0%				
<b>CWB C(W) - ELS Stage 2 Concrete Plug</b>										
Sec II A - CWB CW CP: Grouting	SIIA 12150	4	24-Feb-16 A	23-Mar-16	-90	80%				
Sec II A - CWB CW CP: Wet Excavation	SIIA 12170	7	24-Mar-16	30-Mar-16	-90	0%				
Sec II A - CWB CW CP: Treatment to Concrete Plug	SIIA 12190	11	31-Mar-16	10-Apr-16	-90	0%				
Sec II A - CWB CW CP: Cut Sheetpile	SIIA 12210	11	11-Apr-16	21-Apr-16	-90	0%				
Sec II A - CWB CW CP: Blinding Layer & Cutting of C4 Bulkhead	SIIA 12230	12	22-Apr-16	03-May-16	-90	0%				



Activity Name	Activity ID	Remaining Dur	Early Start	Early Finish	Total Float	Activity % Complete	2016				
							Mar	Apr	May	Jun	
<b>CWB C(W) - Tunnel Structure</b>											
Sec II A - CWB CW: base, wall, OHVD & roof (bay 1)	SIIA12140	60	16-May-16	14-Jul-16	-102	0%					
Sec II A - CWB CW: base, wall, OHVD & roof (bay 2)	SIIA12180	60	17-Jun-16	15-Aug-16	-102	0%					
<b>CWB C (E)</b>											
<b>CWB C(E) - ELS &amp; Tunnel Structure</b>											
<b>CWB C(E) - ELS</b>											
Sec II A - CWB CE: 2nd Layer Excavation & Shoring	SIIA13162	14	16-Mar-16 A	02-Apr-16	-134	12.5%					
Sec II A - CWB CE: 3rd Layer Excavation & shoring	SIIA13164	14	03-Apr-16	16-Apr-16	-134	0%					
Sec II A - CWB CE: Formation Excavation	SIIA13165	7	17-Apr-16	23-Apr-16	-134	0%					
Sec II A - CWB CE: Blinding Layer & Barrette Trimming	SIIA13166	11	24-Apr-16	04-May-16	-134	0%					
Sec II A - CWB CE: Demolish Bulkhead at MVB (adj. to bay 3)	SIIA13270	26	05-May-16	30-May-16	-134	0%					
Sec II A - CWB CE: Demolish Bulkhead at C1 Interface	SIIA13290	26	31-May-16	25-Jun-16	-134	0%					
<b>CWB C(E) - Tunnel Structure</b>											
Sec II A - CWB CE: base, wall, OHVD & roof (bay 2)	SIIA13220	60	05-May-16	03-Jul-16	-103	0%					
Sec II A - CWB CE: base, wall, OHVD & roof (bay 1) (after MVB Bulkhead Removal)	SIIA13260	60	31-May-16	29-Jul-16	-108	0%					
<b>CWB C - Exhaust Duct</b>											
<b>CWB C - Exhaust Duct Piling</b>											
Sec II A - Exhaust Duct at Slip Rd3: Set Up & Loading Test	SIIA12860	14	21-Mar-16	06-Apr-16	-67	0%					
<b>CWB C - Exhaust Duct Temp Work &amp; ELS</b>											
Sec II A - Exhaust Duct at Slip Rd3: Temp. Sheetpiling	SIIA12880	21	07-Apr-16	27-Apr-16	-80	0%					
Sec II A - Exhaust Duct at Slip Rd3: Excavation & Shoring	SIIA12900	30	28-Apr-16	27-May-16	-80	0%					
Sec II A - Exhaust Duct at Slip Rd3: Blinding & Capping Plate	SIIA12910	10	28-May-16	06-Jun-16	-80	0%					
Sec II A - Exhaust Duct at Slip Rd3: Demolish Bulkheads	SIIA12920	30	07-Jun-16	06-Jul-16	-80	0%					
<b>CWB C - Exhaust Duct Structural Work</b>											
Sec II A - Exhaust Duct at Slip Rd3: bottom slab, wall and top slab (bay 2)	SIIA12940	30	07-Jun-16	06-Jul-16	-66	0%					
<b>CWB D - Slip Road 1</b>											
<b>CWB D - Slip Road 1 - Dwall Construction &amp; Piling</b>											
Sec II A - CWB SR1: Concrete Plug (MTR TWL)	SIIA12340	12	17-Feb-16 A	31-Mar-16	-65	78.18%					
<b>CWB D - Slip Road 1 - Pumping Test Preparation/ Pumping Test</b>											
Sec II A - CWB SR1: Sonic Test for Dwall	SIIA12380	43	30-Dec-15 A	01-May-16	1004	28.33%					
Sec II A - CWB SR1: Install dewatering/ recharging/ observation wells	SIIA12400	54	20-Mar-16	12-May-16	-72	0%					
<b>CWB D - Slip Road 1 - ELS &amp; Tunnel Structure</b>											
<b>CWB D - Slip Road 1 - ELS</b>											
<b>CWB D - SR1 - ELS - East</b>											
Sec II A - CWB SR1 East: 2nd Layer Excavation & Shoring	SIIA 12482	12	16-Mar-16 A	31-Mar-16	-93	25%					
Sec II A - CWB SR1 East: Formation Excavation	SIIA 12502	3	01-Apr-16	03-Apr-16	-93	0%					
Sec II A - CWB SR1 East: Blinding & Pile Head Treatment	SIIA 12522	10	04-Apr-16	13-Apr-16	-50	0%					
<b>CWB D - SR1 - ELS - Middle</b>											
Sec II A - CWB SR1 Middle: 2nd Layer Excavation & Shoring	SIIA 12530	18	15-Mar-16 A	06-Apr-16	-48	57.14%					
Sec II A - CWB SR1 Middle: 3rd Layer Excavation & Shoring	SIIA 12550	10	07-Apr-16	16-Apr-16	-48	0%					



Activity Name	Activity ID	Remaining Dur	Early Start	Early Finish	Total Float	Activity % Complete	2016			
							Mar	Apr	May	Jun
Sec II A - CWB SR1 Middle: Formation Excavation	SIIA 12570	2	17-Apr-16	18-Apr-16	-48	0%				
Sec II A - CWB SR1 Middle: Blinding Layer & Pile Head Treatment	SIIA 12590	10	13-May-16	22-May-16	-72	0%				
<b>CWB D - SR1 - ELS - West</b>										
Sec II A - CWB SR1 West: 1st Layer Excavation & Shoring	SIIA 12600	8	01-Apr-16	08-Apr-16	-65	0%				
Sec II A - CWB SR1 West: 2nd Layer Excavation & Shoring	SIIA 12620	8	09-Apr-16	16-Apr-16	-65	0%				
Sec II A - CWB SR1 West: 3rd Layer Excavation & Shoring	SIIA 12640	8	17-Apr-16	24-Apr-16	-65	0%				
Sec II A - CWB SR1 West: Formation Excavation	SIIA 12660	3	25-Apr-16	27-Apr-16	-65	0%				
Sec II A - CWB SR1 West: Blinding Layer	SIIA 12680	1	28-Apr-16	28-Apr-16	-65	0%				
<b>CWB D - Slip Road 1 - Tunnel Structure</b>										
Sec II A - CWB SR1: base, wall & roof (bay 1)	SIIA12500	30	04-Apr-16	03-May-16	-74	0%				
Sec II A - CWB SR1: base, wall & roof (bay 2)	SIIA12520	30	21-Apr-16	20-May-16	-74	0%				
Sec II A - CWB SR1: base, wall & roof (bay 3)	SIIA12540	30	08-May-16	06-Jun-16	-74	0%				
Sec II A - CWB SR1: base, wall & roof (bay 4)	SIIA12560	30	25-May-16	23-Jun-16	-74	0%				
Sec II A - CWB SR1: base, wall & roof (bay 5)	SIIA12565	30	11-Jun-16	10-Jul-16	-74	0%				
<b>CWB D - Slip Road 1 - Trough / Retaining Wall</b>										
<b>CWB D - Slip Road 1 - Trough/Retaining Wall Temp Work &amp; ELS</b>										
Sec II A - CWB SR1 Trough & RW: Preboring for installing Sheetpile (120 nos@ 3 nos./day)	SIIA12740	20	17-Mar-16 A	16-Apr-16	-93	16.67%				
Sec II A - CWB SR1 Trough & RW: install sheetpile	SIIA12760	21	28-Mar-16	25-Apr-16	-93	0%				
Sec II A - CWB SR1 Trough & RW: Excavation & Shoring	SIIA12780	20	26-Apr-16	20-May-16	-93	0%				
<b>CWB D - Slip Road 1 - Trough/Retaining Wall Structure</b>										
Sec II A - CWB SR1 Trough & RW: Trough Structure (bay 1)	SIIA12800	18	21-May-16	11-Jun-16	-93	0%				
Sec II A - CWB SR1 Trough & RW: Trough Structure (bay 2)	SIIA13720	18	06-Jun-16	27-Jun-16	-93	0%				
Sec II A - CWB SR1 Trough & RW: Retaining Walls RW3 (bay 1)	SIIA13800	15	17-Jun-16	05-Jul-16	-93	0%				
<b>Section III - Road D11 &amp; Part of Road P2, Area 4, Implement 1st Stage ITA</b>										
<b>Roadwork &amp; Utilities</b>										
<b>Remaining Works for Handing Over Area 4</b>										
Utilities	SIIII1080	23	29-Feb-16 A	20-Apr-16	13	42.5%				
Remaining Roadwork at West	SIIII1100	36	20-Feb-16 A	06-May-16	0	40%				
Others	SIIII1120	7	07-May-16	16-May-16	0	0%				
<b>Works after the Box Culvert Reinstatement</b>										
[Summary] reinstatement of Box Culvert K	SIIII10240	76	15-Jun-16	12-Sep-16	-68	0%				
<b>Box Culvert L1 &amp; FRP-L - Bay 8</b>										
<b>Box Culvert L1 &amp; FRP-L - Bay 8 Structure</b>										
Sec VI C - Culvert L - Diversion of flow from temp channel into Cul L	CUL10252	2	24-Mar-16	25-Mar-16	40	0%				
Culvert L - Bay 8 - Temporary Works for Flow Diversion & Box Culvert Construction	CUL10260	31	03-Feb-16 A	29-Apr-16	14	43.64%				
Culvert L - bay 8 - construct pile cap	CUL11320	25	30-Apr-16	31-May-16	14	0%				
Culvert L - bay 8 - construct base slab	CUL11322	25	01-Jun-16	30-Jun-16	14	0%				
<b>Box Culvert L1 &amp; FRP-L - Bay 12 to 13</b>										
<b>Box Culvert L1 &amp; FRP-L - Bay 12 to 13 Piling</b>										
Culvert L - bay 13 - construct pre-bored H-pile (PC10 & PC11)	CUL12356	32	22-Feb-16 A	30-Apr-16	-98	40.74%				





Activity Name	Activity ID	Remaining Dur	Early Start	Early Finish	Total Float	Activity % Complete	2016			
							Mar	Apr	May	Jun
<b>Box Culvert L1 &amp; FRP-L - Bay 12 to 13 Temp Work &amp; ELS</b>										
Culvert L - bay 12 & 13 - pile head treatment and construct pile cap PC9, PC10 & PC11	CUL12480	90	03-May-16	18-Aug-16	-63	0%				
<b>Box Culvert L1 &amp; FRP-L - Bay 12 to 13 Structure</b>										
Culvert L - bay 12 & 13 - Construct Precast Units (off site)	CUL12545	75	16-May-16*	12-Aug-16	-58	0%				
<b>Section VI C - Area 3, 6, 8A &amp; 8C</b>										
<b>Area 8A &amp; 8C - Seawall Modification</b>										
<b>Modification of Seawall</b>										
<b>Modification of Seawall - Zone 1 &amp; 2</b>										
Sec VIC - Zone 1: Working Platform & P7 to P17, P23 & P24	PRS10060	24	21-Mar-16*	21-Apr-16	-124	0%				
<b>Area 8A - MTR Pump Room Clearance &amp; Handover</b>										
Sec VI C - Clearance of pump house for Handover	PRS-1060	5	16-Apr-16	21-Apr-16	-111	0%				
<b>Area 6 - Box Culvert bay 5-6</b>										
Sec VI C - Culvert L - bay 5, 6 - backfill to +4.0mPD	CUL11787	10	22-Oct-15 A	31-Mar-16	0	77.78%				
Sec VI C - backfill to formation level at Area 6	SVIC10020	7	24-Mar-16	31-Mar-16	0	0%				
<b>Section VI D - Area 8B &amp; 10</b>										
<b>WDII Box 1 Construction</b>										
<b>WDII Box 1 Existing Pile Head and Dry Dock</b>										
Sec VI D - Precast Box 1 (bottom slab and temp bulk head wall)	WD-C3032	62	31-Mar-16*	18-Jun-16	0	0%				
Sec VID - Precast Box Beam	WD-C3052	40	16-Apr-16	03-Jun-16	-37	0%				
<b>WDII Box 1 Existing Pile Head Treatment</b>										
Sec VIC - Pile Head at Pile B3	PRS10300	5	09-Mar-16 A	25-Mar-16	-106	77.27%				
Sec VIC - Pile Head at Pile B4	PRS10320	14	26-Mar-16	15-Apr-16	-106	0%				
<b>WDII Box 1 ELS</b>										
Sec VIC - Excavation at Zone 3	WD-C3994	9	27-Apr-16	07-May-16	-124	0%				
Sec VIC - Removal of Platform of Bored Pile	WD-C3995	2	09-May-16	10-May-16	-124	0%				
Sec VIC - Install Column, C1, Struct S1 & RS1	WD-C3998	10	11-May-16	23-May-16	-124	0%				
Sec VIC - Excavation of Fluid	WD-C4000	8	24-May-16	01-Jun-16	-124	0%				
Sec VIC - Excavation of Rockfill to -7.5mPD	WD-C4020	4	02-Jun-16	06-Jun-16	-124	0%				
Sec VIC - 2nd Layer of Strut	WD-C4040	7	07-Jun-16	15-Jun-16	-124	0%				
Sec VIC - Excavation down to -11.5mPD	WD-C4060	4	16-Jun-16	20-Jun-16	-124	0%				
<b>Section IV - Slip Road 3</b>										
<b>Roadwork &amp; Utilities (Lung King Street)</b>										
Stage 1 - MH1.2 to MH1.3 Road & Drainage	SIV11000	45	21-Mar-16*	18-May-16	-108	0%				
Stage 2 - MH1.3 to MH1.4 Road & Drainage	SIV11020	45	19-May-16	12-Jul-16	-108	0%				
<b>Section VII - Remainder Works</b>										
<b>Promenade Seawall Parapet Construction</b>										
Sec VII - construct block seawall mass concrete coping & backfill to pavement formation	SVII10400	120	28-May-16*	20-Oct-16	39	0%				
<b>Section VIII - Landscape Softworks</b>										
<b>Soft Landscaping Works</b>										
Sec VIII - Trees Planting	SVIII10040	180	21-Mar-16	28-Oct-16	0	0%				



Activity Name	Activity ID	Remaining Dur	Early Start	Early Finish	Total Float	Activity % Complete	2016			
							Mar	Apr	May	Jun
<b>Section X - Protection &amp; Preservation of Trees</b>										
<b>Soft Landscaping Works</b>										
Sec X - Protection & Preservation of Trees	SX10020	489	31-Jan-13 A	21-Jul-17	0	70.04%				
<b>VO : Construction of Box 4A &amp; 4B</b>										
<b>Box 4A</b>										
Concrete Fill with 300 dia. carrier drain (Approx. 50m)	4A10000	21	06-Jun-16	30-Jun-16	-60	0%				
Internal Suspended Slab & Internal Wall	4A10020	30	17-Jun-16	22-Jul-16	-60	0%				

Activity ID	Activity Name	Physical % Complete	Original Duration	Start	Finish	Total Float
<b>HY/2009/15 - Works Programme Update 20 March 2016</b>						
<b>Stage and Section Completion</b>						
KD_5745	KD10 - Completion of Section 5, (1863d)	0%	0d	18-Sep-15A	25-Mar-16*	-142d
KD_5740	KD9 - Completion of Section 4, (1739d)	0%	0d	06-Dec-15A	11-Jun-16*	-344d
KD_5750	KD11 - Completion of Section 6, (1949d)	0%	0d		12-Jun-16*	-135d

2016											
Jan	Feb	Mar	Apr	May	Jun	Jul	Aug	Sep	Oct	Nov	Dec

Activity ID	Activity Name	Physical % Complete	Original Duration	Start	Finish	Total Float
<b>TPCWAW</b>						
<b>TPCWAW ELS Works - East Section</b>						
S5_6180	East excavation to formation	100%	85d	18-Sep-15A	24-Dec-15A	
S5_61070	Demolition of bulkhead wall TPCWAE/TPCWAW	100%	34d	06-Dec-15A	09-Jan-16A	
<b>TPCWAW - CCT RC Structure, Base Slab</b>						
S5_60600	Waterproofing + Base slab Bay 1 (incl. removal of 7th layer struts after casting of base slab)	100%	15d	03-Dec-15A	23-Dec-15A	
S5_60620	Waterproofing + Base slab Bay 5	100%	11d	05-Dec-15A	29-Dec-15A	
S5_60625	Waterproofing + Base slab Bay 6	100%	11d	16-Dec-15A	19-Jan-16A	
S5_60630	Waterproofing + Base slab Bay 7	100%	7d	07-Jan-16A	05-Feb-16A	
S5_60635	Waterproofing + Base slab Bay 8	100%	6d	12-Jan-16A	05-Feb-16A	
S5_61065	Waterproofing + Base slab Bay 9 (stitching with TPCWAE)	100%	6d	15-Jan-16A	05-Feb-16A	
<b>TPCWAW - CCT RC Structure, Wall</b>						
S5_60675	Wall Bay 2 (+ repropping and removal of 5th & 6th struts)	100%	10d	10-Dec-15A	05-Jan-16A	
S5_60680	Wall Bay 3 (+ repropping and removal of 5th & 6th struts)	100%	21d	10-Dec-15A	07-Jan-16A	
S5_60670	Wall Bay 1 (+ repropping and removal of 5th & 6th struts)	100%	21d	15-Dec-15A	10-Jan-16A	
S5_60685	Wall Bay 4 (+ repropping and removal of 5th & 6th struts)	100%	22d	20-Dec-15A	11-Jan-16A	
S5_60690	Wall Bay 5 (+ removal of 5th strut)	100%	10d	02-Jan-16A	29-Jan-16A	
S5_60695	Wall Bay 6 (+ removal of 5th strut)	100%	7d	21-Jan-16A	25-Feb-16A	
S5_60700	Wall Bay 7 (+ removal of 5th strut)	100%	8d	16-Feb-16A	25-Feb-16A	
S5_60705	Wall Bay 8 (+ removal of 5th strut)	100%	9d	16-Feb-16A	25-Feb-16A	
S5_61075	Wall Bay 9 (+ removal of 5th strut)	100%	8d	16-Feb-16A	25-Feb-16A	
<b>TPCWAW - Maintenance Walkway</b>						
S5_9085	TPCWAW - Maintenance walkway / profile barrier	86.95%	23d	20-Dec-15A	22-Mar-16	82d

<ul style="list-style-type: none"> <li><span style="color: green;">■</span> Remaining Work</li> <li><span style="color: blue;">■</span> Actual Work</li> <li><span style="color: red;">◆</span> Remaining Work</li> <li><span style="color: red;">◆</span> Critical Remaining Work</li> <li><span style="color: grey;">◆</span> Milestone</li> <li><span style="color: grey;">◆</span> Summary</li> <li><span style="color: blue;">◆</span> Actual Work</li> </ul>	<p>1 of 3</p> <p>China State Construction Engineering (Hong Kong) Ltd.</p> <p>Contract No. HY/2009/15 - Central Wan Chal By Pass - Tunnel ( Causeway Bay Typhoon Shelter Section)</p> <p style="text-align: right;"><b>WORKS PROGRAMME UPDATE</b></p>	<p>Prepared by Quartz Jequints</p> <p>Revision</p> <p>Progress Update</p> <p>(based on WP Rev. N-3rd Submission)</p> <p>Checked</p> <p>WC</p> <p>Approved</p> <p>WSL</p>
<p>Date</p> <p>20-Mar-16</p>	<p>TPCWAW - Maintenance walkway / profile barrier</p>	<p>Approved</p> <p>WSL</p>



中國建築工程(香港)有限公司  
CHINA STATE CONSTRUCTION ENGINEERING HONG KONG LTD.



Activity ID	Activity Name	Physical % Complete	Original Duration	Start	Finish	Total Float	2016																	
							Jan	Feb	Mar	Apr	May	Jun	Jul	Aug	Sep	Oct	Nov	Dec						
<b>TPCWAW Removal of Temporary Reclamation</b>																								
SE_9140	Backfilling/Removal of ELS + Re charge water	0%	25d	20-Mar-16	13-Apr-16	-339d																		
SE_9105	Remove general fill/seawall block (concurrent activities)	0%	25d	28-Mar-16	21-Apr-16	-339d																		
SE_9120	Saw cut diaphragm wall	0%	63d	10-Apr-16	12-Jun-16	-339d																		
SE_7550	Completion of Section 6- (KD11), above - 20mPD	0%	0d		12-Jun-16	-135d																		
<b>Works in Portion 11 under KD9 (Incl. Reinstatement of Vertical Seawall)</b>																								
SE_9144	Reinstate vertical seawall (by marine plant)	0%	24d	09-May-16	04-Jun-16	-290d																		
SE_9147	Reinstate ground level at Portion 11	0%	6d	06-Jun-16	11-Jun-16	-290d																		
SE_9148	Completion of KD9- Works in Portion 11	0%	0d		11-Jun-16	-344d																		



3 of 3

China State Construction Engineering (Hong Kong) Ltd.  
 Contract No. HY/2009/15 - Central Wan Chal By Pass - Tunnel ( Causeway Bay Typhoon Shelter Section)

**WORKS PROGRAMME UPDATE**

Prepared by Quartz Jeung		Checked	Approved
Date	Revision	W/C	W/S/L
20-Mar-16	Progress Update		
	(based on W/P Rev. N-3rd Submission)		

中國建築工程(香港)有限公司  
 CHINA STATE CONSTRUCTION ENGINEERING (HONG KONG) LTD.

Activity ID	Activity Name	Original Duration	Start	Finish	2016			
					Feb	Mar	Apr	May
<b>DWP-06 (A) - Three Months Rolling Programme_updated up to 20-Feb-16</b>								
<b>Key Dates</b>								
<b>Site Possession Dates</b>								
IECM	Instruction to proceed with Section 8 (IEC Abutment M)- subject to excision 945d	0	20-Feb-16*		◆ Instruction to proceed with Section 8 (IEC Abutment M)- subject to excision 945d			
IX	Site Possession of Portion IX (1096d)	0	21-Mar-16*		◆ Site Possession of Portion IX (1096d)			
<b>Handover Dates (Contractual Date up to EOT-08)</b>								
HIIIC	Handover of Portion III	0	20-Feb-16*		◆ Handover of Portion III			
HVIC	Handover of Portion VI	0	20-Feb-16*		◆ Handover of Portion VI			
HVIIC	Handover of Portion VII	0	20-Feb-16*		◆ Handover of Portion VII			
HXVC	Handover of Portion XV	0	20-Feb-16*		◆ Handover of Portion XV			
<b>Handover Dates (Programmed Date)</b>								
HIII	Handover of Portion III	0	18-Mar-16		◆ Handover of Portion III			
HVI	Handover of Portion VI	0	18-Mar-16		◆ Handover of Portion VI			
HVII	Handover of Portion VII	0	18-Mar-16		◆ Handover of Portion VII			
HXV	Handover of Portion XV	0	20-Feb-16		◆ Handover of Portion XV			
<b>Stage / Section Completion of Works (Contractual Date up to EOT-08)</b>								
KD02C	KD2 - Achievement of Stage 2 (994d) (Plus 5 day EOT)	0	20-Feb-16*		◆ KD2 - Achievement of Stage 2 (994d) (Plus 5 day EOT)			
KD14C	KD14 - Completion of Section 8 of the Works (1125d)	0	18-Apr-16*			◆ KD14 - Completion of Section 8 of the Works (1125d)		
KD15C	KD15 - Completion of Section 9 of the Works (994d)	0	20-Feb-16*		◆ KD15 - Completion of Section 9 of the Works (994d)			
<b>Stage / Section Completion of Works (Programmed Date)</b>								
KD15	KD15 - Completion of Section 9 of the Works (994d)	0	20-Feb-16		◆ KD15 - Completion of Section 9 of the Works (994d)			
KD2	KD2 - Achievement of Stage 2 (994d) (Plus 5 day EOT)	0	22-Apr-16			◆ KD2 - Achievement of Stage 2 (994d) (Plus 5 day EOT)		
KD5	KD5 - Completion of Section 2 of the Works (849d)	0	20-Feb-16		◆ KD5 - Completion of Section 2 of the Works (849d)			
<b>Works in TS3</b>								
<b>Works in TS3-East</b>								
<b>Cut &amp; Cover Tunnel Structure</b>								
<b>TS3-East CCT - Ch.4500.000 to Ch.4582.140</b>								
<b>TS3 East CCT - Roof Slab</b>								
TS3E_6730	CCT Roof Slab - Bay 1	10	06-Jan-16 A	29-Jan-16 A	Roof Slab - Bay 1			
<b>TS3 East CCT - Roof Slab Waterproofing + Screeding</b>								
TS3E_6810	TS3(E) Waterproofing to Roof Slab - Bay 1 to Bay 4	12	04-Jan-16 A	23-Jan-16 A	Waterproofing to Roof Slab - Bay 1 to Bay 4			
TS3E_6820	TS3(E) Waterproofing to Roof Slab - Bay 6 to Bay 8	12	07-Jan-16 A	31-Jan-16 A	(E) Waterproofing to Roof Slab - Bay 6 to Bay 8			
TS3E_6840	TS3(E) Screeding - Bay 1 to Bay 4	12	25-Jan-16 A	12-Feb-16 A	TS3(E) Screeding - Bay 1 to Bay 4			
TS3E_6850	TS3(E) Screeding - Bay 6 to Bay 8	12	22-Jan-16 A	01-Feb-16 A	(E) Screeding - Bay 6 to Bay 8			



- Actual Work
- Remaining Work
- Critical Remaining Work
- ◆ Milestone

Date	Revision	Checked	Approved
20-Feb-16	Updated to 20th Feb 2016	DML/WC	

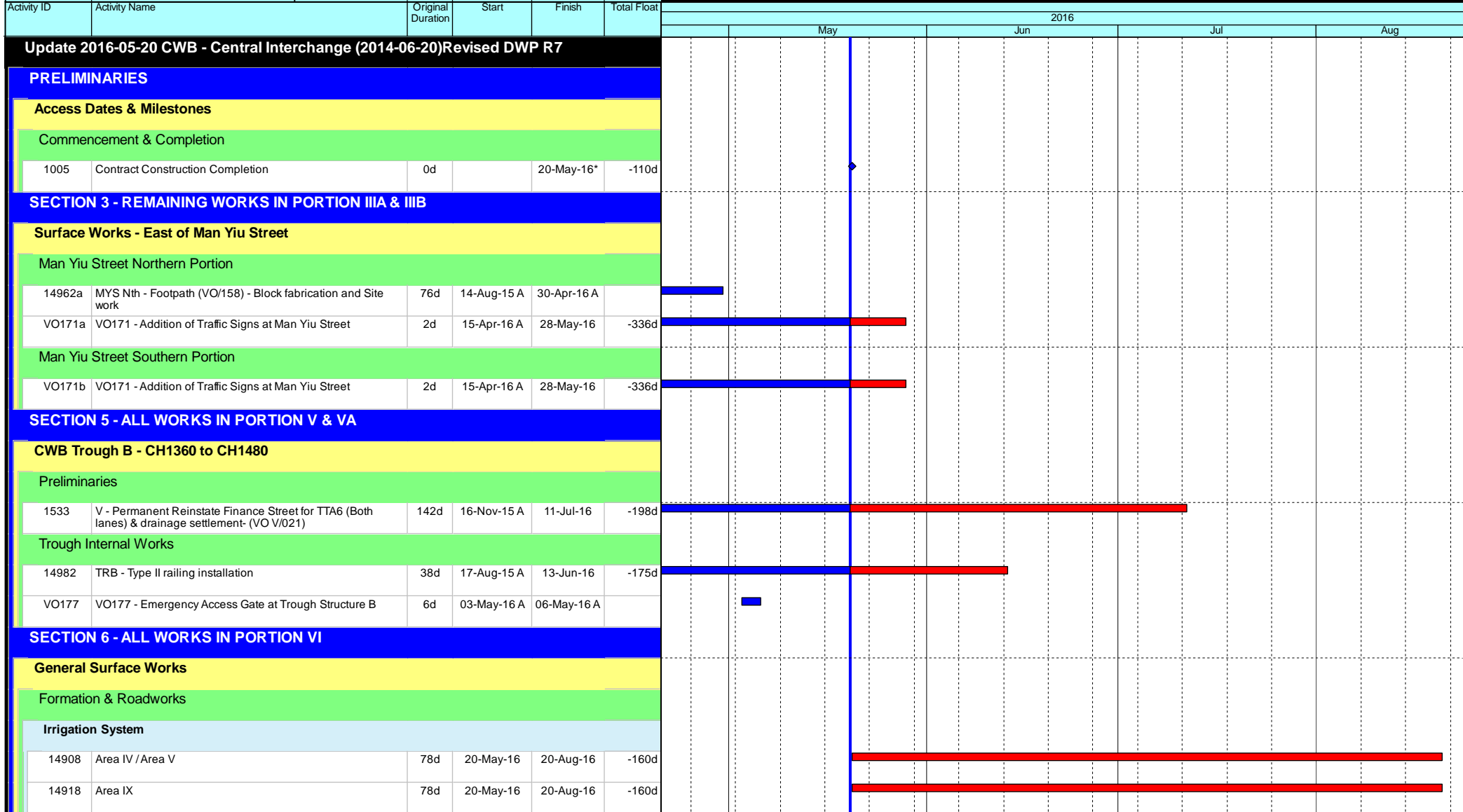
Activity ID	Activity Name	Original Duration	Start	Finish	2016											
					Feb			Mar			Apr			May		
					1	2	3	1	2	3	1	2	3	1	2	3
<b>TS3 East - Cable Trough</b>																
TS3E_6940	TS3(E) Cable Trough Bay 1-8	27	22-Dec-15 A	27-Jan-16 A	Cable Trough, Bay 1-8											
<b>TS3 East - Cross Passage CP32 (CH4552 Westbound)</b>																
TS3E_6960	CP32 - Roof Slab	8	20-Jan-16 A	20-Jan-16 A												
TS3E_6970	CP32 - Waterproofing to Roof Slab	4	21-Jan-16 A	24-Jan-16 A	Waterproofing to Roof Slab											
TS3E_6980	CP32 - Screeding	4	25-Jan-16 A	28-Jan-16 A	Screeding											
<b>Removal of Reclamation</b>																
<b>TS3-East Removal of Reclamation</b>																
TS3E_6560	King post load transfer	10	20-Jan-16 A	29-Jan-16 A	King post load transfer											
TS3E_7550	Layer 4: Removal of waling & lateral struts	6	21-Jan-16 A	25-Feb-16	Layer 4: Removal of waling & lateral struts											
TS3E_7560	Layer 3&7: Removal of waling & lateral struts	8	26-Feb-16	04-Mar-16	Layer 3&7: Removal of waling & lateral struts											
TS3E_7570	Layer 2: Removal of waling & lateral struts	7	19-Mar-16	25-Mar-16	Layer 2: Removal of waling & lateral struts											
TS3E_7580	Removal of king post above sea bed level	7	19-Mar-16	25-Mar-16	Removal of king post above sea bed level											
TS3E_7590	Removal of general fill	14	05-Mar-16	18-Mar-16	Removal of general fill											
TS3E_7600	Removal of seawall block	21	11-Mar-16	31-Mar-16	Removal of seawall block											
TS3E_7610	Sawcutting of diaphragm wall	21	26-Mar-16	15-Apr-16	Sawcutting of diaphragm wall											
TS3E_7620	Backfill & reinstatement of seabed up to -6.0mDP	7	16-Apr-16	22-Apr-16	Backfill & reinstatement of seabed up to -6.0mDP											
TS3E_7630	Achievement of KD2 - Achievement of Stage 2	0		22-Apr-16	◆ Achievement of KD2 - Achievement of Stage 2											
<b>Works in TS3-West</b>																
<b>Diaphragm Wall</b>																
<b>TS3-West Post D/wall Works</b>																
TS3W_3510	D/wall Interface coring + grouting	100	06-Jun-15 A	05-Feb-16 A	D/wall Interface coring + grouting											
TS3W_3520	D/Wall Coring + fissure grouting	100	24-Jun-15 A	11-Feb-16 A	D/Wall Coring + fissure grouting											
TS3W_3530	D/wall integrity test	100	04-Jun-15 A	20-Jan-16 A												
<b>ELS &amp; Rock Excavation</b>																
<b>ELS Fabrication Works</b>																
TS3W_4510	ELS struts & waling fabrication	75	17-Sep-15 A	18-Mar-16	ELS struts & waling fabrication											
<b>TS3-West ELS Works</b>																
TS3W_4515	King Post installation	45	20-Sep-15 A	20-Jan-16 A	King Post installation											
TS3W_4520	Start of ELS - Layer 1: Soft excavation struts installation	15	04-Nov-15 A	19-Feb-16 A	Start of ELS - Layer 1: Soft excavation struts installation											
TS3W_4530	Layer 2: Soft excavation struts installation	15	28-Nov-15 A	27-Feb-16	Layer 2: Soft excavation struts installation											
TS3W_4540	Layer 3: Soft excavation struts installation (Remove Layer 1)	15	28-Jan-16 A	04-Mar-16	Layer 3: Soft excavation struts installation (Remove Layer 1)											
TS3W_4550	Layer 4 Soft excavation struts installation	15	05-Mar-16	19-Mar-16	Layer 4 Soft excavation struts installation											
TS3W_4560	Layer 5: Soft excavation struts installation	15	20-Mar-16	03-Apr-16	Layer 5: Soft excavation struts installation											
TS3W_4570	Layer 6: Soft excavation struts installation	15	04-Apr-16	18-Apr-16	Layer 6: Soft excavation struts installation											

Activity ID	Activity Name	Original Duration	Start	Finish	2016			
					Feb	Mar	Apr	May
TS3W_4580	Layer 7: Soft excavation struts installation	15	19-Apr-16	03-May-16				Layer 7: Soft excavation struts installation
<b>Cut &amp; Cover Tunnel Structure</b>								
<b>Temporary Works Design</b>								
TS3W_2125	(01) RC Temp Work Design - submission	24	15-Mar-16	15-Apr-16				(01) RC Temp Work Design - submission
TS3W_2130	(01) RC Temp Work Design - review and approval by AECOM	24	16-Apr-16	13-May-16				(01) RC Temp Work Design - review and approval by AECOM
<b>Method Statement</b>								
TS3W_2135	(01)RC works method statement - submission	24	11-Mar-16	12-Apr-16				(01)RC works method statement - submission
TS3W_2140	(01)RC works method statement - review and approval by AECOM	24	13-Apr-16	10-May-16				(01)RC works method statement - review and approval by AECOM
<b>SR8 CCT - Sea Side Portion</b>								
<b>SR8 Works on Reclaimed Area</b>								
SR8.MS.1010	ELS Works at SR8 (Marine Side)	90	20-Feb-16	19-May-16				ELS Works at SR8 (Marine Side)
<b>SR8 Sea Side - Blinding + Waterproofing</b>								
TS3W_7510	SR8 Blinding Bay 1-6	6	19-May-16	24-May-16				SR8 Blinding Bay 1-6
<b>Works in SR8 (Open Cut Method)</b>								
<b>SR8 - Cofferdam &amp; Cut &amp; Cover Tunnel Works</b>								
<b>SR8 East Bound - (Seaside to Victoria Road / IEC Central Divider)</b>								
<b>Tunnel Ch.514.500 to Ch.459.000 (East Bound) - ELS / CCT / BF + Reinstatement Works</b>								
<b>ELS Works</b>								
SR8.EB.1621	ELS Layer 2 - Soft Excavation + Strut Installation	12	22-Dec-15 A	09-Mar-16				ELS Layer 2 - Soft Excavation + Strut Installation
SR8.EB.1622	ELS Layer 3 - Soft Excavation + Strut Installation	12	10-Mar-16	23-Mar-16				ELS Layer 3 - Soft Excavation + Strut Installation
SR8.EB.1623	ELS Layer 4 - Soft Excavation + Strut Installation	12	24-Mar-16	11-Apr-16				ELS Layer 4 - Soft Excavation + Strut Installation
SR8.EB.1624	ELS Layer 5 - Soft Excavation + Strut Installation	12	12-Apr-16	25-Apr-16				ELS Layer 5 - Soft Excavation + Strut Installation
SR8.EB.1625	ELS Layer 6 - Soft Excavation + Strut Installation	12	26-Apr-16	10-May-16				ELS Layer 6 - Soft Excavation + Strut Installation
<b>Structural Works</b>								
<b>Blinding + Waterproofing</b>								
SR8.EB.1630	Blinding for Bay 1 to Bay 4	4	10-May-16	16-May-16				Blinding for Bay 1 to Bay 4
SR8.EB.1670	Waterproofing - Bay 1 to Bay 4	4	16-May-16	20-May-16				Waterproofing - Bay 1 to Bay 4
<b>SR8 West Bound - Ch. 459.000 to 385.000 (Victoria Road / IEC Central Divider)</b>								
<b>Tunnel Ch.459.000 to 385.000 (West Bound) - ELS / CCT/ BF+Reinstatement Works</b>								
<b>West Bound - ELS</b>								
SR8.WB.5080	ELS Layer 1 - Soft Excavation + Strut Installation	12	21-Nov-15 A	28-Jan-16 A				ELS Layer 1 - Soft Excavation + Strut Installation
SR8.WB.5130	ELS Layer 2 - Soft Excavation + Strut Installation	12	30-Nov-15 A	29-Feb-16				ELS Layer 2 - Soft Excavation + Strut Installation
SR8.WB.5140	ELS Layer 3 - Soft Excavation + Strut Installation	12	01-Mar-16	14-Mar-16				ELS Layer 3 - Soft Excavation + Strut Installation
SR8.WB.5150	ELS Layer 4 - Soft Excavation + Strut Installation	12	15-Mar-16	31-Mar-16				ELS Layer 4 - Soft Excavation + Strut Installation
SR8.WB.5160	ELS Layer 5 - Soft Excavation + Strut Installation	12	01-Apr-16	15-Apr-16				ELS Layer 5 - Soft Excavation + Strut Installation



Activity ID	Activity Name	Original Duration	Start	Finish	2016			
					Feb	Mar	Apr	May
					<b>West Bound - CCT Structural Works</b>			
<b>Blinding + Waterproofing</b>								
SR8.WB.5090	Blinding for Bay 1 to Bay 8	9	15-Apr-16	26-Apr-16				Blinding for Bay 1 to Bay 8
<b>SR8 Ch.385.000 to Ch.317.500 - (Inside Victoria Park to Tunnel Portal)</b>								
<b>SR8 Tunnel - ELS / CCT / BF Works ( 7 Bays Ch. 385.000 to Ch.317.500)</b>								
<b>Portal Structure</b>								
<b>Roof Slab</b>								
SR8.VP.5300	Roof Slab - Bay 3	10	15-Dec-15 A	02-Feb-16 A	Roof Slab - Bay 3			
<b>Gallery for EP01</b>								
SR8.VP.5310	Wall - Bay 1 to Bay 3	49	20-Feb-16	21-Apr-16				Wall - Bay 1 to Bay 3
SR8.VP.5320	Roof Slab - Bay 1 to Bay 3	70	08-Mar-16	03-Jun-16				
<b>Roof Slab Waterproofing + Screeding</b>								
SR8.VP.5330	Waterproofing to Roof Slab - Bay 1 to Bay 3	7	08-Mar-16	15-Mar-16				Waterproofing to Roof Slab - Bay 1 to Bay 3
SR8.VP.5340	Screeding - Bay 1 to Bay 3	7	16-Mar-16	23-Mar-16				Screeding - Bay 1 to Bay 3
<b>Pump Sump E</b>								
SR8.VP.5400	Wall + Roof Slab	14	16-Jan-16 A	02-Feb-16 A	Wall + Roof Slab			
SR8.VP.5410	Access Chamber above Roof	14	20-Feb-16	07-Mar-16				Access Chamber above Roof
SR8.VP.5420	Backfill to Ground Level	10	24-Mar-16	08-Apr-16				Backfill to Ground Level
SR8.VP.5430	Construct Two Discharge Manholes	10	09-Apr-16	20-Apr-16				Construct Two Discharge Manholes
SR8.VP.5440	Slab for Pump Room	21	20-Feb-16	15-Mar-16				Slab for Pump Room
SR8.VP.5450	Slab for Elec. Room	21	20-Feb-16	15-Mar-16				Slab for Elec. Room
SR8.VP.5460	E&M Works (By Others)	90	21-Apr-16	08-Aug-16				
<b>Backfill &amp; Reinstatement Works Including Removal of Strutting</b>								
SR8.VP.5050	Layer 3&2: Removal of Waling & Struts	7	20-Feb-16	27-Feb-16				Layer 3&2: Removal of Waling & Struts
SR8.VP.5060	Reinstatement Works inside VP	120	16-Apr-16	07-Sep-16				
SR8.VP.5350	Layer 1: Removal of Waling & Struts	7	08-Apr-16	16-Apr-16				Layer 1: Removal of Waling & Struts
<b>SR8 Ch 317.500 to Ch 210.000 - U-Structure &amp; Slab (Victoria Park)</b>								
<b>Excavation and Lateral Support</b>								
SR8_2320	Remove Temporary Access to Bowling Green at Bay 3(CH230 to CH240) After Completion of BG & Pavilion	7	20-Feb-16	27-Feb-16				Remove Temporary Access to Bowling Green at Bay 3(CH230 to CH240) After Completion of BG & Pavilion
<b>RC CCT &amp; Backfill Ch317.5000 to Ch240.000</b>								
<b>Structure</b>								
<b>Wall</b>								
SR8_2120	Drainage Works	21	14-Jan-16 A	05-Feb-16 A	Drainage Works			
<b>Utility Through</b>								
SR8_2050	Utility Trough	48	16-Feb-16 A	21-Mar-16				Utility Trough

Activity ID	Activity Name	Original Duration	Start	Finish	2016			
					Feb	Mar	Apr	May
<b>Backfill &amp; Reinstatement Works Including Removal of Struts</b>								
SR8_1920	SR8 U structure - Backfilling & Compaction + Removal of Struts & Sheet Pile	60	07-Jan-16 A	11-May-16				SR8 U structure -
SR8_1920.10	Backfill and Compaction to North side and South side of U- Structure & Remove Struts by layer	60	08-Jan-16 A	11-May-16				Backfill and Compa
<b>SR8 Structural Slab Ch.240.000 to Ch.210.000</b>								
SR8_2090B	Wall Stern - Bay 3	7	29-Feb-16	07-Mar-16		Wall Stern - Bay 3		
<b>Tsing Fung St - RW &amp; Subway Extension &amp; Toe Wall at Hing Fat St</b>								
<b>Ret. Wall &amp; TF Subway Extension (Portion V)</b>								
<b>Retaining Wall RW8C at Tsing Fung Street (Portion V)</b>								
VP_1390	Demolish Top Portion of Existing Wall Head and Kerb	18	05-Jun-15 A	14-Mar-16		Demolish Top Portion of Existing Wall Head and Kerb		
VP_1400	Road Formation - Subbase + Kerb + U-shape Channel	48	14-Mar-16	13-May-16				Road Formation
VP_1415	PVC Duct and Draw Pits	24	04-Nov-15 A	13-Jun-16				
VP_1770	Install Steel Railing on Top of RW8C	14	20-May-15 A	09-Mar-16		Install Steel Railing on Top of RW8C		
<b>Retaining Wall + Toe Wall at Hing Fat Street</b>								
<b>Subway Extension at Tsing Fung Street (Portion VIII)</b>								
VP_1375.50	TFS Subway extension - install Railing	8	20-Feb-16	29-Feb-16		TFS Subway extension - install Railing		
<b>RC Works - Retaining Wall RW8D</b>								
VP_1500	Site Possession Portion IX(1096d) (Toe wall at Hing Fat St)	0	19-Feb-16 A			Site Possession Portion IX(1096d) (Toe wall at Hing Fat St)		
<b>RC Works - Toe Wall (RW8E)</b>								
VP_6160	Sheet Piling and Excavation to Formation level	45	20-Feb-16	16-Apr-16		Sheet Piling and Excavation to Formation level		
VP_6180	Blinding layer	36	09-May-16	21-Jun-16				
<b>Works in Victoria Park</b>								
<b>Establishment Works for Landscape Softworks</b>								
<b>KD11 - Section 7A: Portion XIV &amp; XV (Victoria Park Open Space)</b>								
EW_1000	Establishment Works - for Landscape Softworks and transplanted trees in Portion XIV & XV	901	23-Feb-15 A	14-Dec-17				
<b>KD12 - Section 7B: Portion VI &amp; VII (Reprov. Bowling Green Area)</b>								
EW_1010	Establishment Works - for Landscape Softworks and transplanted trees in Portion VI & VII	365	03-Dec-15 A	16-Jul-16				
<b>Preservation and Protection of Trees</b>								
PPT_0000	Preservation and Protection of Existing Trees	1088	21-Mar-13 A	20-Nov-16				
<b>Mooring Components Upkeep (CBTS and ATS)</b>								
MAR_2000	Mooring Upkeep at Portion XIX(19) & XX(20) - ATS (if instructed by Engineer)	1399	21-Mar-13 A	17-Jan-17				
MAR_3020	Mooring Upkeep at Portion X(10) & XVI(16) - CBTS	979	15-May-14 A	21-Jan-17				
<b>Works for Public Works Regional Laboratory (North Lantau)</b>								
<b>Maintenance and Upkeep of New PWRL (Portion XVII)</b>								
PWRL_1050	Maintenance/ Upkeep of New PWRL	1301	19-Jul-13 A	21-Nov-17				

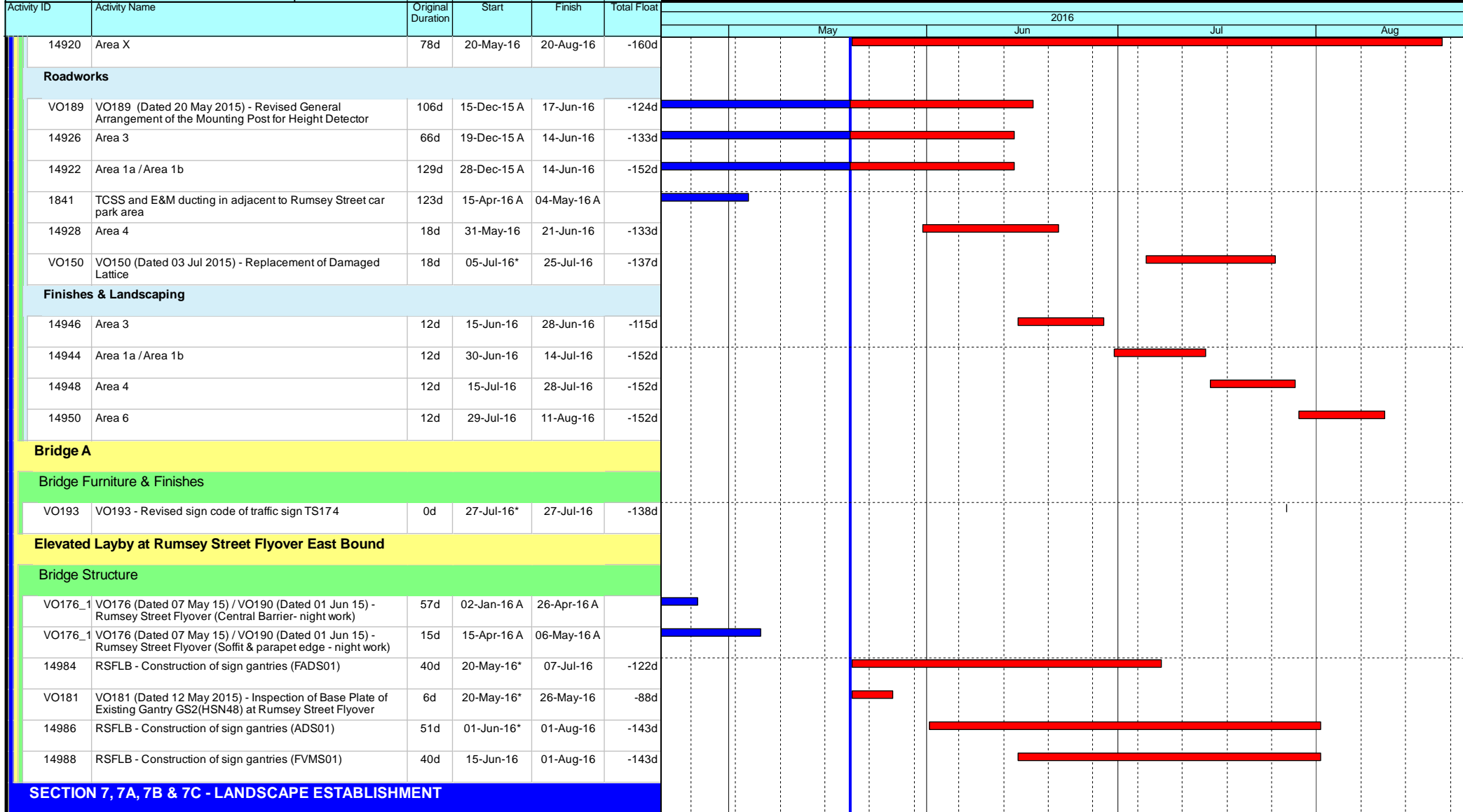


- ◆ Current Milestone
- Critical Remaining Work
- Level of Effort
- Remaining Work
- ▲ Baseline Milestone
- Project Baseline
- Actual Work

**Leighton Contractors (Asia) Limited**  
**Programme Update 68 (May 2016)**  
**THREE MONTH ROLLING**

Project ID: U068  
 Baseline: DCP7-2c  
 Layout: Update Three Month Rolling U068  
 Page 1 of 3

Date	Revision	Checked	Appro...
20-Apr-16	U067	AT	DG
20-May-16	U068	AT	DG



- Current Milestone
- Critical Remaining Work
- Level of Effort
- Remaining Work
- Baseline Milestone
- Project Baseline
- Actual Work

### Leighton Contractors (Asia) Limited

### Programme Update 68 (May 2016)

### THREE MONTH ROLLING

Project ID: U068  
 Baseline: DCP7-2c  
 Layout: Update Three Month Rolling U068  
 Page 2 of 3

Date	Revision	Checked	Appro...
20-Apr-16	U067	AT	DG
20-May-16	U068	AT	DG

Activity ID	Activity Name	Original Duration	Start	Finish	Total Float	2016			
						May	Jun	Jul	Aug
4020	EST - Portion IVD Landscape Establishment	365d	03-Nov-14 A	02-Jun-16	-212d				
4000	EST - Portion IIIA Landscape Establishment	365d	20-May-16*	19-May-17	-468d				
4030	EST - Portion V Landscape Establishment	365d	20-May-16*	19-May-17	-563d				
4040	EST - Portion VI Landscape Establishment	365d	12-Aug-16	11-Aug-17	-194d				
<b>Key Dates for Completion of Sections</b>									
<b>Anticipated Completion</b>									
1139	KD16 - Anticipated Completion	0d		11-Aug-16*	-194d				
<b>Contract Required Completion</b>									
1095	KD12 - Section 7A Complete (DAY-1870)	0d		20-May-16*	-198d				
1105	KD14 - Section 7B Complete (DAY-1870)	0d		20-May-16*	-198d				
1115	KD10 - Section 6 Complete (DAY-1958)	0d		20-May-16*	-110d				
1125	KD11 - Section 7 Complete (DAY-1965)	0d		20-May-16*	-103d				
1140	KD16 - Section 8 Complete (DAY-1958)	0d		20-May-16*	-110d				
<b>Portion Handover Dates</b>									
<b>Anticipated Handover</b>									
2960a	Portion IIIA Handover - Remaining (KD3 + 28 days) - (EOT 26.5 days added)	0d		28-May-16*	-422d				
<b>Contract Required Handover</b>									
3096	Portion VI Handover (KD10 + 28 days)	0d		20-May-16*	-82d				

- Current Milestone
- Critical Remaining Work
- Level of Effort
- Remaining Work
- Baseline Milestone
- Project Baseline
- Actual Work

### Leighton Contractors (Asia) Limited Programme Update 68 (May 2016) THREE MONTH ROLLING

Project ID: U068  
 Baseline: DCP7-2c  
 Layout: Update Three Month Rolling U068  
 Page 3 of 3

Date	Revision	Checked	Appro...
20-Apr-16	U067	AT	DG
20-May-16	U068	AT	DG

Data Date: 20-May-16

# CWB(CC) - Commissioning Contract

TASK filters: 3 Months\_4, Not HL.

Activity ID	Activity Name	Original Duration	Start	Finish	Total Float	2016			
						May	Jun	Jul	Aug
<b>Update 2016-05-20 CWB(CC) - Commissioning Contract (DWP R2d)</b>									
<b>PRELIMINARIES AND GENERAL REQUIREMENTS</b>									
<b>Salient Key Dates and Milestones</b>									
<b>Possession Dates and Vacation Dates</b>									
PO-VIb_a	Possession of Portion VIb (Day 761) - CH3400-3428	568d	20-May-16	08-Dec-17	39d				
PO-IXb_1	Possession of Portion IXb (Day 712) - EVB (below +3.6mPD to tunnel top slab) - Relinquished on 12 Apr 2016	607d	20-May-16	16-Jan-18	-87d				
PO-IXc_1	Possession of Portion IXc (Day 712) - EVB above 3.6mPD - Relinquished on 12 Apr 2016	607d	20-May-16	16-Jan-18	-87d				
PO-VIa_a	Possession of Portion VIa (Day 823) - CH3250-3283	506d	31-May-16	18-Oct-17	35d				
PO-Vb2	Possession of Portion V (Day 607) - SR2 / SCP3	507d	31-May-16	19-Oct-17	-81d				
<b>Submissions and Approvals</b>									
<b>Initial General Submission</b>									
1211	Submission of 1st Project video film	0d		20-May-16*	-109d				
9932	Submission of 1st Project video film Video1 / Video2 (Release II)	0d		20-May-16*	-474d				
<b>Specified Plans</b>									
1172	Submission of a Traffic management Contingency Plan	90d	20-May-16	17-Aug-16	350d				
<b>DETAILED DESIGN OF WORKS</b>									
<b>Permanent Works Design and Engineering</b>									
<b>Metal Roof on MVB</b>									
2182	MVB Roof - Prepare Preliminary Design and Submission (Schematics)	48d	01-Dec-15 A	06-Jun-16	-100d				
2182a	MVB Roof - Pending for RFI reply for Schematic design	24d	14-Jan-16 A	06-Jun-16	-100d				
2184	MVB Roof - Finalise preliminary design and ICE Review	24d	07-Jun-16	06-Jul-16	-100d				
2186	MVB Roof - Submit to the Engineer with ICE Certificate	0d		06-Jul-16	-100d				
2188	MVB Roof - Engineer review & approval	48d	07-Jul-16	31-Aug-16	-100d				
2190	MVB Roof - Prepare the Detailed Design submission	18d	11-Aug-16	31-Aug-16	-100d				
<b>Metal Roof on WVB</b>									

- ◆ Current Milestone
- Critical Remaining Work
- Level of Effort
- Remaining Work
- ▲ Baseline Milestone
- Project Baseline
- Actual Work

## Leighton Contractors (Asia) Limited Programme Update 27 (May 2016) THREE MONTH ROLLING

Project ID: H2613-U027  
 Baseline: DWP2d  
 Layout: Update Three Month Rolling U027  
 Page 1 of 23

Date	Revision	Checked	Appro...
20-Apr-16	U026	AT	CW
20-May-16	U027	AT	CW

Data Date: 20-May-16

# CWB(CC) - Commissioning Contract

TASK filters: 3 Months\_4, Not HL.

Activity ID	Activity Name	Original Duration	Start	Finish	Total Float	2016			
						May	Jun	Jul	Aug
2180	WVB Roof - Engineer review & Approval; Consent to Proceed Construction	24d	07-Feb-15 A	26-May-16	-173d				
<b>Green Roof on EVB</b>									
2166	EVB Roof - Engineer review & Approval; Consent to Proceed Construction	24d	18-Apr-16 A	02-Jun-16	-55d				
<b>Green Wall on ADB</b>									
10238	ADB Green Wall - Engineer review & Approval; Consent to Proceed Construction	24d	07-Mar-16 A	02-Jun-16	-35d				
<b>Landscaping &amp; Associated Irrigation System</b>									
10262	Landscaping - Engineer review & approval	48d	24-Aug-15 A	26-May-16	112d				
10264	Landscaping - Prepare the Detailed Design submission	18d	08-Dec-15 A	31-May-16	108d				
10266	Landscaping - Finalise detailed design submission and ICE Checks & issue Check Certificate	36d	01-Jun-16	14-Jul-16	108d				
12444	Landscaping - Submit detailed design to the Engineer with ICE Certificate	0d		14-Jul-16	108d				
10268	Landscaping - Engineer review & Approval; Consent to Proceed Construction	24d	15-Jul-16	11-Aug-16	108d				
<b>Architectural Feature for EVS</b>									
2146	EVS - Engineer review & approval	48d	02-Mar-15 A	27-May-16	-152d				
2152	EVS - Engineer review & Approval; Consent to Proceed Construction	24d	14-Oct-15 A	27-May-16	-37d				
<b>Electrical System</b>									
<b>ES System</b>									
<b>ITP, Method Statement &amp; Testing &amp; Commissioning Plan</b>									
10554	ES - Testing & Commissioning Plan submission to AECOM	60d	13-Feb-16 A	28-Apr-16 A					
<b>Building Services System</b>									
<b>MVAC System</b>									
<b>Subletting</b>									
11028	MVAC - Confirm S/C Terms and Issue LOI subject to AECOM Approval	50d	28-Apr-15 A	26-May-16	121d				
<b>ITP, Method Statement &amp; Testing &amp; Commissioning Plan</b>									
11068	MVAC System - Method Statement submission to AECOM	68d	22-Jan-16 A	06-Jun-16	112d				
11070	MVAC System - Testing & Commissioning submission Plan to AECOM	70d	22-Jan-16 A	06-Jun-16	112d				

- Current Milestone
- Critical Remaining Work
- Level of Effort
- Remaining Work
- Baseline Milestone
- Project Baseline
- Actual Work

## Leighton Contractors (Asia) Limited Programme Update 27 (May 2016) THREE MONTH ROLLING

Project ID: H2613-U027  
Baseline: DWP2d  
Layout: Update Three Month Rolling U027  
Page 2 of 23

Date	Revision	Checked	Appro...
20-Apr-16	U026	AT	CW
20-May-16	U027	AT	CW

Data Date: 20-May-16

# CWB(CC) - Commissioning Contract

TASK filters: 3 Months\_4, Not HL.

Activity ID	Activity Name	Original Duration	Start	Finish	Total Float	2016			
						May	Jun	Jul	Aug
<b>Fire Services System (FS)</b>									
<b>ITP, Method Statement &amp; Testing &amp; Commissioning Plan</b>									
11024	FS System - Method Statement submission to AECOM	80d	08-Dec-15 A	02-Jun-16	43d				
11026	FS System - Testing & Commissioning Plan submission to AECOM	90d	08-Dec-15 A	02-Jun-16	115d				
<b>Plumbing System (PL)</b>									
<b>Subletting</b>									
11072	PL - Confirm S/C Terms and Issue LOI subject to AECOM Approval	12d	20-May-16	02-Jun-16	115d				
<b>ITP, Method Statement &amp; Testing &amp; Commissioning Plan</b>									
11112	PL System - Testing & Commissioning Plan submission to AECOM (review / approval)	90d	16-Oct-15 A	02-Jun-16	115d				
11114	PL System - Method Statement submission to AECOM	80d	16-Oct-15 A	02-Jun-16	115d				
<b>Drainage System (DR)</b>									
<b>ITP, Method Statement &amp; Testing &amp; Commissioning Plan</b>									
10500	DR System - Preparation of Testing & Commissioning Plan	60d	14-Nov-15 A	06-Jun-16	22d				
11126	DR System - Testing & Commissioning Plan to AECOM	90d	07-Jun-16	22-Sep-16	22d				
<b>Access Road at Area D &amp; E</b>									
12720	Access Road at Area D & E - Prepare design submission	24d	20-May-16	17-Jun-16	187d				
12726	Access Road at Area D & E - Submission of design to MTRC / AECOM	0d		17-Jun-16	187d				
12724	Access Road at Area D & E - MTRC/AECOM review & Approval; Consent to Proceed Construction	28d	18-Jun-16	21-Jul-16	187d				
<b>PROCUREMENT, MANUFACTURING &amp; DELIVERIES</b>									
<b>Procurement; Manufacturing; Deliveries</b>									
<b>Metal Roof on WVB</b>									
<b>Shop Drawings</b>									
12844a	WVB Roof - Shop Drawings review by the Engineer (Eastern Side)	24d	26-Mar-15 A	31-May-16	-225d				
2216	WVB Roof - Obtain Approval for Shop Drawings	0d		31-May-16	-225d				
<b>Procurement &amp; Fabrication</b>									

- Current Milestone
- Level of Effort
- Remaining Work
- Project Baseline
- Actual Work
- Critical Remaining Work
- Baseline Milestone

## Leighton Contractors (Asia) Limited Programme Update 27 (May 2016) THREE MONTH ROLLING

Project ID: H2613-U027  
Baseline: DWP2d  
Layout: Update Three Month Rolling U027  
Page 3 of 23

Date	Revision	Checked	Appro...
20-Apr-16	U026	AT	CW
20-May-16	U027	AT	CW



Data Date: 20-May-16

# CWB(CC) - Commissioning Contract

TASK filters: 3 Months\_4, Not HL.

Activity ID	Activity Name	Original Duration	Start	Finish	Total Float	2016			
						May	Jun	Jul	Aug
2218a1	WVB Roof - Fabrication drawing (Eastern Side) submission to the Engineer and obtain approval	12d	19-Apr-16 A	31-May-16	-211d				
2218a2	WVB Roof - Fabrication drawing (Western Side) submission to the Engineer and obtain approval	12d	20-May-16	31-May-16	-261d				
2218	WVB Roof - Confirm design of embed items	0d	01-Jun-16		-255d				
2220a	WVB Roof - assembly units fabrication & delivery	30d	01-Jun-16	30-Jun-16	-255d				
2224	WVB Roof - Metal Roof Fabrication (For Tunnel portal side)	36d	01-Jun-16	06-Jul-16	-261d				
12776a	WVB Roof - Metal Roof Fabrication (For Eastern side)	36d	01-Jun-16	06-Jul-16	-211d				
2222a	WVB Roof - Commence assembly units installation	0d	01-Jul-16		-255d				
2226	WVB Roof - Commencement of works	0d	07-Jul-16		-206d				
<b>Green Roof on EVB</b>									
<b>Shop Drawings</b>									
2228	EVV Green Roof - Shop Drawings submission to the Engineer	30d	03-Jun-16	02-Jul-16	-71d				
12846	EVV Green Roof - Shop Drawings review the Engineer	30d	03-Jul-16	01-Aug-16	-71d				
2230	EVV Green Roof - Obtain Approval for Shop Drawings	0d		01-Aug-16	-71d				
<b>Procurement &amp; Fabrication</b>									
2232	EVV Green Roof - Confirm design of embed items	0d	02-Aug-16		-71d				
2234	EVV Green Roof - Embed fabrication & delivery	60d	02-Aug-16	30-Sep-16	-71d				
<b>Landscaping and Associated Irrigation System</b>									
<b>Shop Drawings</b>									
10272	Landscaping - Shop Drawings submission to the Engineer	30d	12-Aug-16	10-Sep-16	130d				
<b>Green Wall on ADB</b>									
<b>Shop Drawings</b>									
10242	ADB Green Wall - Shop Drawings submission to the Engineer	30d	03-Jun-16	02-Jul-16	-43d				
12850	ADB Green Wall - Shop Drawings review the Engineer	30d	03-Jul-16	01-Aug-16	-43d				
10244	ADB Green Wall - Obtain Approval for Shop Drawings	0d		01-Aug-16	-43d				
<b>Procurement &amp; Fabrication</b>									

- Current Milestone
- Critical Remaining Work
- Level of Effort
- Remaining Work
- Baseline Milestone
- Project Baseline
- Actual Work

## Leighton Contractors (Asia) Limited Programme Update 27 (May 2016) THREE MONTH ROLLING

Project ID: H2613-U027  
Baseline: DWP2d  
Layout: Update Three Month Rolling U027  
Page 4 of 23

Date	Revision	Checked	Appro...
20-Apr-16	U026	AT	CW
20-May-16	U027	AT	CW

Data Date: 20-May-16

# CWB(CC) - Commissioning Contract

TASK filters: 3 Months\_4, Not HL.

Activity ID	Activity Name	Original Duration	Start	Finish	Total Float	2016				
						May	Jun	Jul	Aug	
10246	ADB Green Wall - Confirm design of embed items	0d	02-Aug-16		-43d					
10248	ADB Green Wall - Embed fabrication & delivery	60d	02-Aug-16	30-Sep-16	-43d					
<b>VE Brackets / Panels</b>										
<b>Procurement &amp; Fabrication</b>										
12508	VE Brackets / Panels - Manufacturing & Delivery (Panels)	60d	11-Dec-15 A	18-Jun-16	-43d					
<b>Architectural Feature on EVS</b>										
<b>Shop Drawings</b>										
12854	EVS - Shop Drawings review by the Engineer	30d	08-Jun-15 A	27-May-16	-195d					
2244	EVS - Obtain Approval for Shop Drawings	0d		27-May-16	-195d					
<b>Procurement &amp; Fabrication</b>										
2246	EVS - Confirm design of embed items	0d	28-May-16		-195d					
2248	EVS - Embed fabrication & delivery	30d	28-May-16	26-Jun-16	-195d					
2250	EVS - Commence embed installation	0d	27-Jun-16		-195d					
2252	EVS - Architectural Features Fabrication	90d	27-Jun-16	24-Sep-16	-195d					
<b>Air Purification System (APS)</b>										
<b>Procurement &amp; Fabrication</b>										
2344	APS - FAT DeNO2	60d	01-Dec-15 A	16-Jun-16	-60d					
10088	APS - Ship to HK Store (2nd Batch)	120d	17-Jun-16	01-Dec-16	-60d					
<b>Central Control and Monitoring System (CCMS) and ELV System</b>										
<b>Procurement &amp; Fabrication</b>										
12476	CCMS - FAT for all plants, materials & equipments	30d	20-May-16	18-Jun-16	-149d					
<b>Traffic Control and Surveillance System (TCSS)</b>										
<b>Procurement &amp; Fabrication</b>										
12478	TCSS - FAT for all plants, materials & equipments	197d	16-Dec-15 A	08-Jul-16	-133d					
<b>Building Services System</b>										

- ◆ Current Milestone
- Critical Remaining Work
- Level of Effort
- Remaining Work
- ▲ Baseline Milestone
- Project Baseline
- Actual Work

## Leighton Contractors (Asia) Limited Programme Update 27 (May 2016) THREE MONTH ROLLING

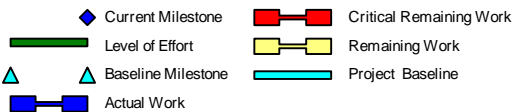
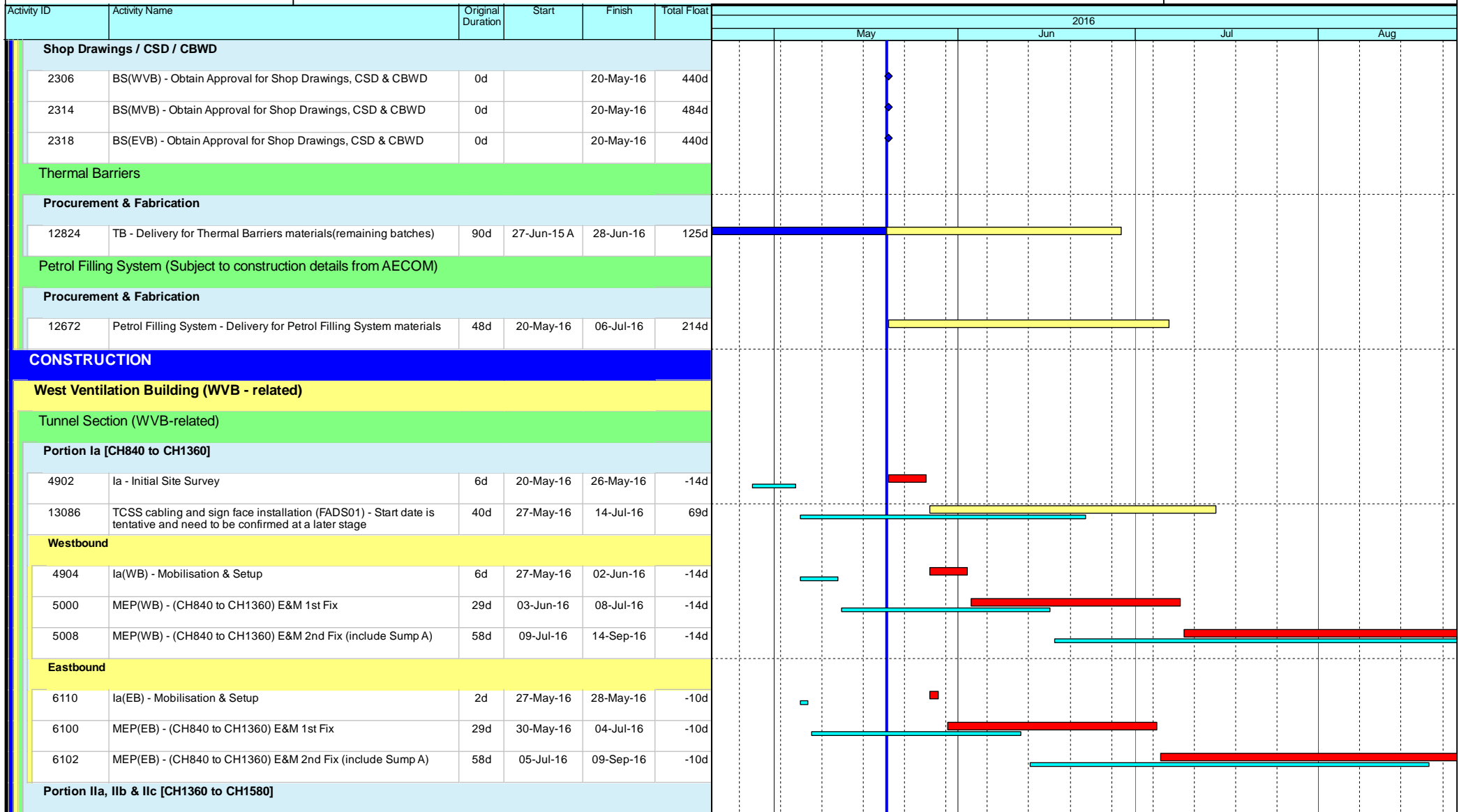
Project ID: H2613-U027  
 Baseline: DWP2d  
 Layout: Update Three Month Rolling U027  
 Page 5 of 23

Date	Revision	Checked	Appro...
20-Apr-16	U026	AT	CW
20-May-16	U027	AT	CW

Data Date: 20-May-16

# CWB(CC) - Commissioning Contract

TASK filters: 3 Months\_4, Not HL.



## Leighton Contractors (Asia) Limited Programme Update 27 (May 2016) THREE MONTH ROLLING

Project ID: H2613-U027  
Baseline: DWP2d  
Layout: Update Three Month Rolling U027  
Page 6 of 23

Date	Revision	Checked	Appro...
20-Apr-16	U026	AT	CW
20-May-16	U027	AT	CW

Data Date: 20-May-16

# CWB(CC) - Commissioning Contract

TASK filters: 3 Months\_4, Not HL.

Activity ID	Activity Name	Original Duration	Start	Finish	Total Float	2016					
						May	Jun	Jul	Aug		
<b>Westbound</b>											
12208	lb&llc(WB) - Anchorage installation for subsequent E&M 1st Fix and VE panel frame support (include protection) (1920m2)	21d	20-Jul-15 A	31-May-16	-155d						
4924b	lb&llc(WB) - Thermal Barrier installation (include protection removal) - Final coat (1 team)	73d	01-Jun-16	26-Aug-16	-155d						
<b>Eastbound</b>											
12210	lb&llc(EB) - Anchorage installation for subsequent E&M 1st Fix and VE panel frame support (include protection) (1920m2)	21d	08-Feb-16 A	31-May-16	25d						
6114	MEP(EB) - (CH1360 to CH1580) E&M 1st Fix	12d	01-Jun-16	15-Jun-16	25d						
6116	MEP(EB) - (CH1360 to CH1580) E&M 2nd Fix	24d	20-Jun-16	18-Jul-16	22d						
<b>Portion Ib [CH1580 to CH1800]</b>											
<b>Westbound</b>											
12212	lb(WB) - Anchorage installation for subsequent E&M 1st Fix and VE panel frame support (include protection) (2700m2)	30d	20-Jul-15 A	26-May-16	-108d						
4928b	lb(WB) - Thermal Barrier installation (include protection removal) - Final coat (1 team)	73d	18-Sep-15 A	04-Jul-16	-139d						
12212a	lb(WB) - Concrete plinth for Cable Bracket / VE Panels (CH 1580-1800)	8d	17-Feb-16 A	24-May-16	-106d						
5004	MEP(WB) - (CH1580 to CH1800) E&M 1st Fix	12d	05-Jul-16	18-Jul-16	-139d						
5012	MEP(WB) - (CH1580 to CH1800) E&M 2nd Fix	24d	19-Jul-16	15-Aug-16	-139d						
5028	MEP(WB) - (CH1580 to CH1800) TCSS Field equip & cable installation	7d	08-Aug-16	15-Aug-16	-131d						
5020	MEP(WB) - (CH1580 to CH1800) E&M Final Fix	8d	16-Aug-16	24-Aug-16	-139d						
<b>Eastbound</b>											
12214	lb(EB) - Anchorage installation for subsequent E&M 1st Fix and VE panel frame support (include protection) (2700m2)	30d	08-Sep-15 A	02-Jun-16	-33d						
<b>Portion III [CH1800 to CH2600]</b>											
<b>Westbound</b>											
12216	III(WB) - Anchorage installation for subsequent E&M 1st Fix and VE panel frame support (include protection) (9600m2)	54d	17-Aug-15 A	13-Jun-16	-123d						
5006	MEP(WB) - (CH1800 to CH2600) E&M 1st Fix	44d	25-Apr-16 A	15-Jun-16	-125d						
5014	MEP(WB) - (CH1800 to CH2600) E&M 2nd Fix	89d	24-May-16	06-Sep-16	-125d						
<b>Eastbound</b>											
12218	III(EB) - Anchorage installation for subsequent E&M 1st Fix and VE panel frame support (include protection) (9600m2)	54d	17-Aug-15 A	13-Jun-16	-58d						

- Current Milestone
- Critical Remaining Work
- Level of Effort
- Remaining Work
- Baseline Milestone
- Project Baseline
- Actual Work

## Leighton Contractors (Asia) Limited Programme Update 27 (May 2016) THREE MONTH ROLLING

Project ID: H2613-U027  
 Baseline: DWP2d  
 Layout: Update Three Month Rolling U027  
 Page 7 of 23

Date	Revision	Checked	Appro...
20-Apr-16	U026	AT	CW
20-May-16	U027	AT	CW

Data Date: 20-May-16

# CWB(CC) - Commissioning Contract

TASK filters: 3 Months\_4, Not HL.

Activity ID	Activity Name	Original Duration	Start	Finish	Total Float	2016			
						May	Jun	Jul	Aug
6128	MEP(EB) - (CH1800 to CH2600) E&M 1st Fix	44d	25-Apr-16 A	15-Jun-16	-60d				
6130	MEP(EB) - (CH1800 to CH2600) E&M 2nd Fix (include Sump I)	89d	20-May-16	02-Sep-16	-67d				
<b>West Ventilation Building (WVB)</b>									
<b>RC Structures and Metal Roof</b>									
<b>Plenum (GLA-C / C-F) (VO 09)</b>									
<b>GL A-C / C-F Plenum (VO 09)</b>									
12892	WVB - VO on drill & fix missing starter bars (VO 09)	48d	28-Feb-14 A	31-May-16	-28d				
12982b	WVB - VO on drill & fix missing starter bars - below Grid Line 4 (RFV 4 / 13) (VO 09)	30d	19-Sep-15 A	31-May-16	-28d				
<b>Metal Roof</b>									
10442	WVB - Installation of temporary roof support at tunnel portal	18d	07-Jul-16	27-Jul-16	-206d				
10440	WVB - Erection of 1st steel structure at tunnel portal	6d	28-Jul-16	03-Aug-16	-206d				
10444	WVB - Installation of steel truss at tunnel portal (connecting to the 1st steel structure)	18d	04-Aug-16	24-Aug-16	-206d				
<b>MEP &amp; ABWF Works</b>									
3056	WVB - Waterproofing and roofing (seriously affected by high humidity and rainy weather)	12d	02-Mar-16 A	31-May-16	-123d				
3094	MEP(WVB) - Lift Installation	90d	01-Jun-16	29-Aug-16	-21d				
<b>Basement</b>									
<b>APS Auxiliary Room (B1-01)</b>									
10634	WVB - ABWF works for APS auxiliary room	12d	19-Oct-15 A	21-May-16	-103d				
10644	MEP(WVB) - E&M 1st fixing	24d	23-May-16	20-Jun-16	-103d				
<b>TV Plenum (B1-02)</b>									
10650	WVB - ABWF works for TV Plenum	12d	11-Dec-15 A	30-May-16	16d				
10656	MEP(WVB) - E&M 1st fixing	24d	31-May-16	28-Jun-16	16d				
<b>Sump Pump Room (B1-03)</b>									
10662	WVB - ABWF works for Sump Pump Room	12d	08-Dec-15 A	24-May-16	27d				
10664	MEP(WVB) - E&M 1st fixing	24d	25-May-16	22-Jun-16	27d				

- Current Milestone
- Critical Remaining Work
- Level of Effort
- Remaining Work
- Baseline Milestone
- Project Baseline
- Actual Work

## Leighton Contractors (Asia) Limited Programme Update 27 (May 2016) THREE MONTH ROLLING

Project ID: H2613-U027  
 Baseline: DWP2d  
 Layout: Update Three Month Rolling U027  
 Page 8 of 23

Date	Revision	Checked	Appro...
20-Apr-16	U026	AT	CW
20-May-16	U027	AT	CW

Data Date: 20-May-16

# CWB(CC) - Commissioning Contract

TASK filters: 3 Months\_4, Not HL.

Activity ID	Activity Name	Original Duration	Start	Finish	Total Float	2016			
						May	Jun	Jul	Aug
12310	MEP(WVB) - E&M 2nd fixing	24d	23-Jun-16	21-Jul-16	27d				
10666	MEP(WVB) - Sump Pump installation	24d	22-Jul-16	18-Aug-16	27d				
10668	MEP(WVB) - E&M final fixing	24d	19-Aug-16	15-Sep-16	27d				
<b>G/F</b>									
<b>HKE / HV Switch Room 1 &amp; 2 (G-11 &amp; G-12)</b>									
10670	WVB - ABWF works for HV Switch Rooms	12d	09-Nov-15 A	20-May-16	-162d				
10680	MEP(WVB) - E&M 1st fixing	24d	21-May-16	18-Jun-16	-162d				
12312	MEP(WVB) - E&M 2nd fixing	30d	20-Jun-16	25-Jul-16	-162d				
10682	MEP(WVB) - HKE inspection	18d	26-Jul-16	15-Aug-16	-106d				
10674	MEP(WVB) - Handover HKE/HV Switch Rooms	0d	16-Aug-16		-106d				
10676	MEP(WVB) - HKE HV Switch Rooms installation	100d	16-Aug-16	13-Dec-16	-106d				
<b>Transformer Room 1 &amp; 2 (G-09 &amp; G-15)</b>									
10684	MEP(WVB) - ABWF Works	12d	09-Nov-15 A	23-May-16	-134d				
10686	MEP(WVB) - E&M 1st fixing	24d	24-May-16	21-Jun-16	-134d				
12314	MEP(WVB) - E&M 2nd fixing	30d	26-Jul-16	29-Aug-16	-162d				
<b>Emergency Generator &amp; Fuel Tank Room (G-04, G05)</b>									
10694	MEP(WVB) - ABWF Works	12d	09-Nov-15 A	25-May-16	-82d				
10696	MEP(WVB) - E&M 1st fixing	24d	26-May-16	23-Jun-16	-82d				
<b>Fire Control Centre (G-01)</b>									
10714	MEP(WVB) - ABWF Works	12d	09-Nov-15 A	21-May-16	-25d				
10716	MEP(WVB) - E&M 1st fixing	12d	23-May-16	04-Jun-16	-25d				
<b>Tunnel FS Pump Room (G-02)</b>									
10722	MEP(WVB) - ABWF Works	12d	09-Nov-15 A	23-May-16	-50d				
10724	MEP(WVB) - E&M 1st fixing	12d	24-May-16	06-Jun-16	-50d				
<b>TVF Room (G-08)</b>									

- ◆ Current Milestone
- Critical Remaining Work
- ▬ Level of Effort
- ▬ Remaining Work
- ▲ Baseline Milestone
- ▬ Project Baseline
- ▬ Actual Work

## Leighton Contractors (Asia) Limited Programme Update 27 (May 2016) THREE MONTH ROLLING

Project ID: H2613-U027  
 Baseline: DWP2d  
 Layout: Update Three Month Rolling U027  
 Page 9 of 23

Date	Revision	Checked	Appro...
20-Apr-16	U026	AT	CW
20-May-16	U027	AT	CW

Data Date: 20-May-16

# CWB(CC) - Commissioning Contract

TASK filters: 3 Months\_4, Not HL.

Activity ID	Activity Name	Original Duration	Start	Finish	Total Float	2016			
						May	Jun	Jul	Aug
10732	MEP(WVB) - ABWF Works	12d	15-Feb-16 A	24-May-16	-39d				
10734	MEP(WVB) - E&M 1st fixing	12d	25-May-16	07-Jun-16	-39d				
<b>FS Water Tank &amp; Pump Room (G-14)</b>									
10740	MEP(WVB) - ABWF Works	12d	03-Dec-15 A	24-May-16	-15d				
10742	MEP(WVB) - E&M 1st fixing	12d	25-May-16	07-Jun-16	-15d				
<b>Pressurization Fan Room (G-16)</b>									
10748	MEP(WVB) - ABWF Works	12d	06-Jan-16 A	24-May-16	-3d				
10750	MEP(WVB) - E&M 1st fixing	12d	25-May-16	07-Jun-16	-3d				
<b>Fresh and Flushing Water Tank &amp; Pump Room (G-22)</b>									
10756	MEP(WVB) - ABWF Works	12d	09-Nov-15 A	26-May-16	7d				
10758	MEP(WVB) - E&M 1st fixing	12d	27-May-16	10-Jun-16	7d				
<b>Rain Water &amp; Irrigation Water Tank &amp; Pump Room (G-23)</b>									
10766	MEP(WVB) - ABWF Works	12d	09-Nov-15 A	24-May-16	21d				
10768	MEP(WVB) - E&M 1st fixing	12d	25-May-16	07-Jun-16	21d				
<b>General Area &amp; Corridor</b>									
10706	MEP(WVB) - ABWF Works	12d	09-Nov-15 A	25-May-16	26d				
10708	MEP(WVB) - E&M 1st fixing	30d	26-May-16	30-Jun-16	26d				
<b>1/F</b>									
<b>LV Switch Room (L1-10)</b>									
10774	WVB - ABWF works for LV Switch Rooms	12d	02-Mar-16 A	27-May-16	-84d				
10778	MEP(WVB) - E&M 1st fixing	24d	28-May-16	25-Jun-16	-84d				
12332	MEP(WVB) - E&M 2nd fixing	30d	18-Aug-16	22-Sep-16	-128d				
<b>MCC Room (L1-11)</b>									
10782	MEP(WVB) - ABWF Works	12d	26-Feb-16 A	24-May-16	-37d				
10784	MEP(WVB) - E&M 1st fixing	24d	25-May-16	22-Jun-16	-37d				

- Current Milestone
- Critical Remaining Work
- Level of Effort
- Remaining Work
- Baseline Milestone
- Project Baseline
- Actual Work

## Leighton Contractors (Asia) Limited Programme Update 27 (May 2016) THREE MONTH ROLLING

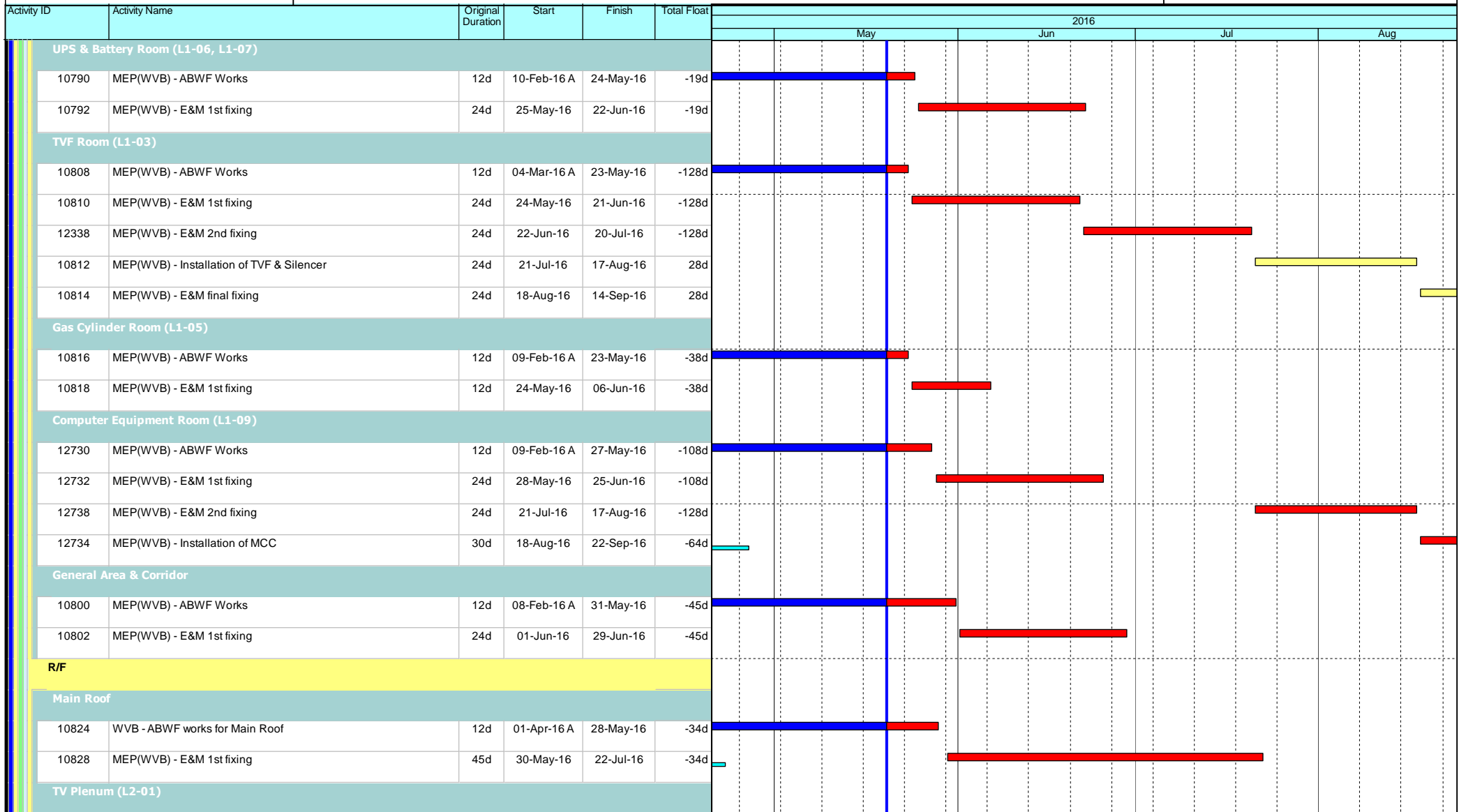
Project ID: H2613-U027  
Baseline: DWP2d  
Layout: Update Three Month Rolling U027  
Page 10 of 23

Date	Revision	Checked	Appro...
20-Apr-16	U026	AT	CW
20-May-16	U027	AT	CW

Data Date: 20-May-16

# CWB(CC) - Commissioning Contract

TASK filters: 3 Months\_4, Not HL.



- Current Milestone
- Critical Remaining Work
- Level of Effort
- Remaining Work
- Baseline Milestone
- Project Baseline
- Actual Work

## Leighton Contractors (Asia) Limited Programme Update 27 (May 2016) THREE MONTH ROLLING

Project ID: H2613-U027  
 Baseline: DWP2d  
 Layout: Update Three Month Rolling U027  
 Page 11 of 23

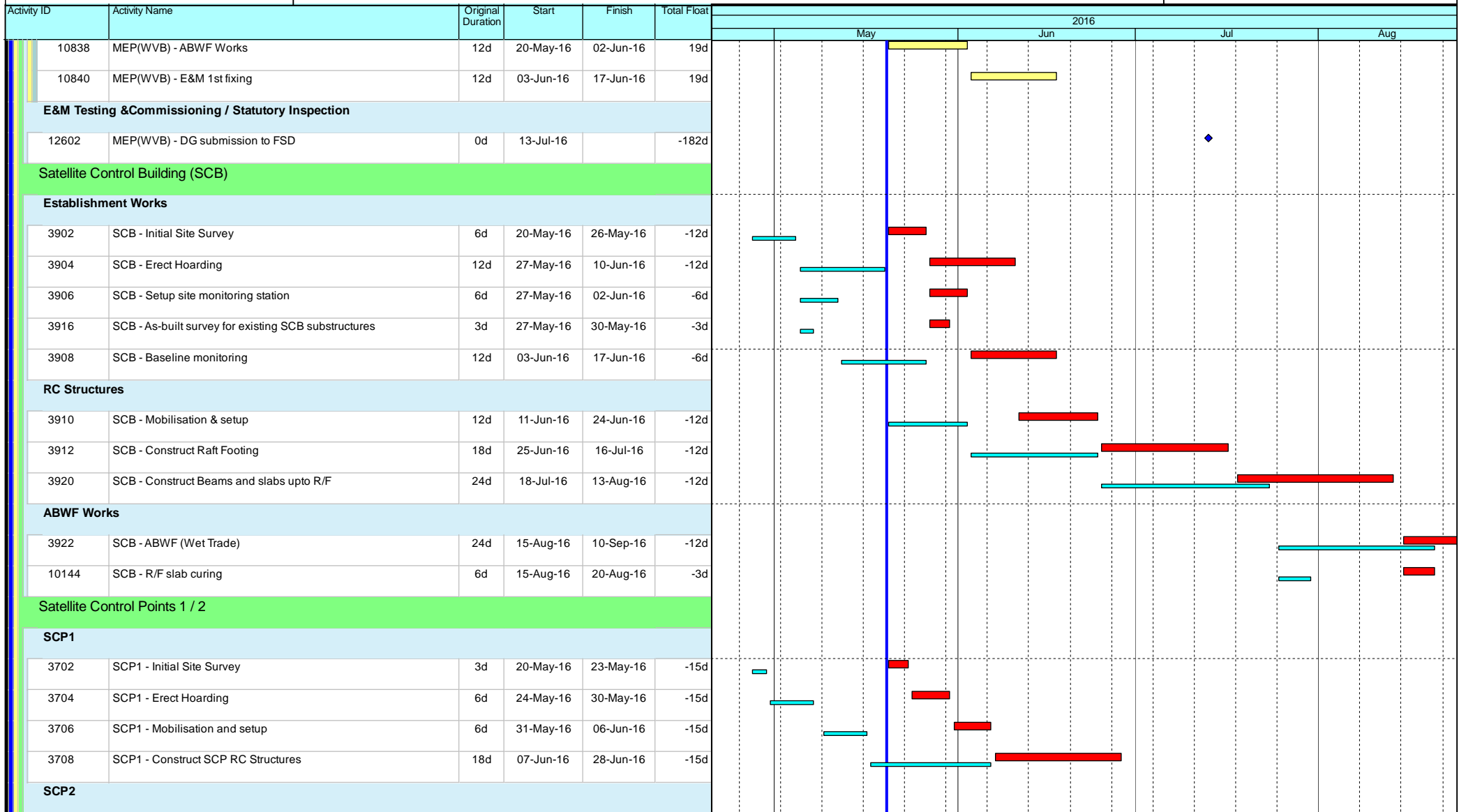
Date	Revision	Checked	Appro...
20-Apr-16	U026	AT	CW
20-May-16	U027	AT	CW



Data Date: 20-May-16

# CWB(CC) - Commissioning Contract

TASK filters: 3 Months\_4, Not HL.



- Current Milestone
- Critical Remaining Work
- Level of Effort
- Remaining Work
- Baseline Milestone
- Project Baseline
- Actual Work

## Leighton Contractors (Asia) Limited Programme Update 27 (May 2016) THREE MONTH ROLLING

Project ID: H2613-U027  
Baseline: DWP2d  
Layout: Update Three Month Rolling U027  
Page 12 of 23

Date	Revision	Checked	Appro...
20-Apr-16	U026	AT	CW
20-May-16	U027	AT	CW

Data Date: 20-May-16

# CWB(CC) - Commissioning Contract

TASK filters: 3 Months\_4, Not HL.

Activity ID	Activity Name	Original Duration	Start	Finish	Total Float	2016											
						May			Jun			Jul			Aug		
3726	SCP2 - Initial Site Survey	6d	20-May-16	26-May-16	-17d												
3728	SCP2 - Erect Hoarding	6d	27-May-16	02-Jun-16	-17d												
3730	SCP2 - Mobilisation and setup	12d	03-Jun-16	17-Jun-16	-17d												
3732	SCP2 - Construct SCP RC Structures	24d	18-Jun-16	16-Jul-16	-17d												
3734	SCP2 - ABWF Works	24d	18-Jul-16	13-Aug-16	-17d												
3746	SCP2 - External Works	30d	18-Jul-16	20-Aug-16	7d												
3736	MEP(SCP2) - E&M 1st Fix	18d	15-Aug-16	03-Sep-16	-17d												
<b>Middle Ventilation Building (MVB - related)</b>																	
<b>Tunnel Section (MVB-related)</b>																	
<b>Portion V [CH2950 to CH3250] - Original Section in DWP Rev.2a</b>																	
5144	V - Initial Site Survey	12d	28-Oct-15 A	14-Jun-16	665d												
<b>Westbound (Outer Lane)</b>																	
5138	MEP(WB) - (CH2950 to CH3250) TCSS Field equip & cable installation	240d	13-Jul-16	09-May-17	-83d												
<b>Eastbound (Outer Lane)</b>																	
5162	V(EB) - Thermal Barrier installation (include protection removal) - 1 team	86d	06-Jun-16	15-Sep-16	-64d												
5156	MEP(EB) - (CH2950 to CH3250) TCSS Field equip & cable installation	206d	13-Aug-16	28-Apr-17	-58d												
<b>Slip Road 2</b>																	
10060	V (SR2) - Mobilisation & Setup	15d	31-May-16	17-Jun-16	-37d												
12230	V (SR2) - Anchorage installation for subsequent E&M 1st Fix and VE panel frame support (include protection) (1716m2)	19d	18-Jun-16	11-Jul-16	-37d												
10062	V (SR2) - Thermal Barrier installation (include protection removal) - 1 team	48d	12-Jul-16	05-Sep-16	-37d												
<b>Slip Road 3</b>																	
10042	V(SR3) - Mobilisation & Setup	6d	12-Jul-16	18-Jul-16	-28d												
12232	V(SR3) - Anchorage installation for subsequent E&M 1st Fix and VE panel frame support (include protection) (2940m2)	33d	19-Jul-16	25-Aug-16	-28d												
<b>Portion Va [CH2950 to CH3210]</b>																	
5144b6	Suspension of works instruct by AECOM (letter ref: 2016004054T dated 13 May 2016)	12d	16-May-16 A	19-May-16 A													

- Current Milestone
- Critical Remaining Work
- Level of Effort
- Remaining Work
- Baseline Milestone
- Project Baseline
- Actual Work

## Leighton Contractors (Asia) Limited Programme Update 27 (May 2016) THREE MONTH ROLLING

Project ID: H2613-U027  
Baseline: DWP2d  
Layout: Update Three Month Rolling U027  
Page 13 of 23

Date	Revision	Checked	Appro...
20-Apr-16	U026	AT	CW
20-May-16	U027	AT	CW

Data Date: 20-May-16

# CWB(CC) - Commissioning Contract

TASK filters: 3 Months\_4, Not HL.

Activity ID	Activity Name	Original Duration	Start	Finish	Total Float	2016					
						May	Jun	Jul	Aug		
<b>Eastbound (Outer Lane)</b>											
5162a	Va(EB) - Thermal Barrier installation (include protection removal) - 1 team	100d	20-May-16	15-Sep-16	-64d						
<b>Portion Vb [SR2 / SR3 / SCP3] - Original Portion Vb</b>											
5144b	Vb - Initial Site Survey	12d	11-Mar-16 A	14-Jun-16	665d						
<b>Portion Vb1 (SR3)</b>											
5144b1	Vb1 - Initial Site Survey	12d	21-Mar-16 A	28-May-16	678d						
5144b4	Suspension of works instruct by AECOM (letter ref: 2016004054T dated 13 May 2016)	12d	16-May-16 A	19-May-16 A							
<b>Slip Road 3</b>											
10042b	Vb(SR3) - Mobilisation & Setup	6d	12-Jul-16	18-Jul-16	-28d						
12232b	Vb(SR3) - Anchorage installation for subsequent E&M 1st Fix and VE panel frame support (include protection) (2940m2)	33d	19-Jul-16	25-Aug-16	-28d						
<b>Portion Vb2 (SR2 / SCP3)</b>											
5142b2	Possession of Portion Vb2	0d	31-May-16		665d						
5144b2	Vb2 - Initial Site Survey	12d	31-May-16	14-Jun-16	665d						
<b>Slip Road 2</b>											
10060b	Vb (SR2) - Mobilisation & Setup	15d	31-May-16	17-Jun-16	-37d						
12230b	Vb (SR2) - Anchorage installation for subsequent E&M 1st Fix and VE panel frame support (include protection) (1716m2)	19d	18-Jun-16	11-Jul-16	-37d						
10062b	Vb (SR2) - Thermal Barrier installation (include protection removal) - 1 team	48d	12-Jul-16	05-Sep-16	-37d						
<b>Portion Vc [CH3210 to CH3250]</b>											
<b>Westbound (Outer Lane)</b>											
5148c	Vc(WB) - Thermal Barrier installation (include protection removal) - 1 team	14d	20-May-16	04-Jun-16	-106d						
5132c	MEP(WB) - (CH3210 to CH3250) E&M 1st Fix	12d	06-Jun-16	20-Jun-16	-106d						
5134c	MEP(WB) - (CH3210 to CH3250) E&M 2nd Fix	18d	21-Jun-16	12-Jul-16	-106d						
5136c	MEP(WB) - (CH3210 to CH3250) E&M Final Fix	10d	13-Jul-16	23-Jul-16	-4d						
5138c	MEP(WB) - (CH3210 to CH3250) TCSS Field equip & cable installation	9d	13-Jul-16	22-Jul-16	-97d						
5140c1	MEP(WB) - (CH3210 to CH3250) E&M Individual System T&C	48d	25-Jul-16	19-Sep-16	-4d						

- Current Milestone
- Critical Remaining Work
- Level of Effort
- Remaining Work
- Baseline Milestone
- Project Baseline
- Actual Work

## Leighton Contractors (Asia) Limited Programme Update 27 (May 2016) THREE MONTH ROLLING

Project ID: H2613-U027  
Baseline: DWP2d  
Layout: Update Three Month Rolling U027  
Page 14 of 23

Date	Revision	Checked	Appro...
20-Apr-16	U026	AT	CW
20-May-16	U027	AT	CW

Data Date: 20-May-16

# CWB(CC) - Commissioning Contract

TASK filters: 3 Months\_4, Not HL.

Activity ID	Activity Name	Original Duration	Start	Finish	Total Float	2016																
						May			Jun			Jul			Aug							
<b>Eastbound (Outer Lane)</b>																						
5162c	Vc(EB) - Thermal Barrier installation (include protection removal) - 1 team	14d	06-Jun-16	22-Jun-16	-102d																	
5150c	MEP(EB) - (CH3210 to CH3250) E&M 1st Fix	12d	23-Jun-16	07-Jul-16	-102d																	
5152c	MEP(EB) - (CH3210 to CH3250) E&M 2nd Fix	18d	13-Jul-16	02-Aug-16	-106d																	
5154c	MEP(EB) - (CH3210 to CH3250) TCSS Field equip & cable installation	9d	03-Aug-16	12-Aug-16	-106d																	
5156c	MEP(EB) - (CH3210 to CH3250) E&M Final Fix	10d	13-Aug-16	24-Aug-16	127d																	
<b>Portion V1b &amp; V1c [CH3400 to CH3800] - Original Section in DWP Rev.2a</b>																						
<b>Westbound</b>																						
5210	V1b & V1c (WB) - Mobilisation & Setup	197d	30-May-16	23-Jan-17	82d																	
12238	V1b & V1c (WB) - Anchorage install for subsequent E&M 1st Fix and VE Panel frame support (include protection) (4800m2)	190d	14-Jun-16	04-Feb-17	77d																	
5202	MEP(WB) - (CH3400 to CH3800) TCSS Field equip & cable installation	223d	09-Jul-16	10-Apr-17	23d																	
<b>Eastbound</b>																						
12240	V1b & V1c (EB) - Anchorage install for subsequent E&M 1st Fix and VE Panel frame support (include protection) (4800m2)	190d	14-Jun-16	04-Feb-17	77d																	
5220	MEP(EB) - (CH3400 to CH3800) TCSS Field equip & cable installation	211d	09-Jul-16	25-Mar-17	35d																	
<b>Portion V1b [CH3400 to CH3800] - Original section in DWP Rev.2d</b>																						
<b>Westbound</b>																						
5210b	V1b(WB) - Mobilisation & Setup	177d	30-May-16	29-Dec-16	-80d																	
12238b	V1b(WB) - Anchorage installation for subsequent E&M 1st Fix and VE Panel frame support (include protection) (4800m2)	185d	14-Jun-16	23-Jan-17	-79d																	
5202b	MEP(WB) - (CH3400 to CH3800) TCSS Field equip & cable installation	212d	09-Jul-16	27-Mar-17	15d																	
<b>Eastbound</b>																						
5224b	V1b(EB) - Mobilisation & Setup	177d	30-May-16	29-Dec-16	-47d																	
12240b	V1b(EB) - Anchorage installation for subsequent E&M 1st Fix and VE Panel frame support (include protection) (4800m2)	185d	14-Jun-16	23-Jan-17	-67d																	
5220b	MEP(EB) - (CH3400 to CH3800) TCSS Field equip & cable installation	216d	09-Jul-16	31-Mar-17	11d																	
<b>Portion V1b [CH3400 to CH3428]</b>																						
5206b1	Possession of Portion V1b	0d	20-May-16		32d																	

- ◆ Current Milestone
- Critical Remaining Work
- ▬ Level of Effort
- ▬ Remaining Work
- ▲ Baseline Milestone
- ▬ Project Baseline
- ▬ Actual Work

## Leighton Contractors (Asia) Limited Programme Update 27 (May 2016) THREE MONTH ROLLING

Project ID: H2613-U027  
 Baseline: DWP2d  
 Layout: Update Three Month Rolling U027  
 Page 15 of 23

Date	Revision	Checked	Appro...
20-Apr-16	U026	AT	CW
20-May-16	U027	AT	CW

Data Date: 20-May-16

# CWB(CC) - Commissioning Contract

TASK filters: 3 Months\_4, Not HL.

Activity ID	Activity Name	Original Duration	Start	Finish	Total Float	2016			
						May	Jun	Jul	Aug
5208b1	Vlb - Initial Site Survey	12d	20-May-16	02-Jun-16	32d	[Gantt bars for 5208b1: May 20-31]			
<b>Westbound</b>									
5210b1	Vlb(WB) - Mobilisation & Setup	12d	03-Jun-16	17-Jun-16	50d	[Gantt bars for 5210b1: Jun 03-17]			
12238b1	Vlb(WB) - Anchorage installation for subsequent E&M 1st Fix and VE Panel frame support (include protection) (336m2)	4d	18-Jun-16	22-Jun-16	50d	[Gantt bars for 12238b1: Jun 18-22]			
<b>Eastbound</b>									
5224b1	Vlb(EB) - Mobilisation & Setup	12d	03-Jun-16	17-Jun-16	50d	[Gantt bars for 5224b1: Jun 03-17]			
12240b1	Vlb(EB) - Anchorage installation for subsequent E&M 1st Fix and VE Panel frame support (include protection) (4800m2)	4d	18-Jun-16	22-Jun-16	50d	[Gantt bars for 12240b1: Jun 18-22]			
<b>Portion Vlb [CH3428 to CH3625]</b>									
5208b2	Vlb - Initial Site Survey	17d	16-Mar-16 A	28-May-16	58d	[Gantt bars for 5208b2: Mar 16-May 28]			
5208b2a	Vlb - Initial Site Survey - E/B	12d	16-Mar-16 A	28-May-16	25d	[Gantt bars for 5208b2a: Mar 16-May 28]			
5208b2b	Vlb - Initial Site Survey - W/B	12d	16-Mar-16 A	28-May-16	58d	[Gantt bars for 5208b2b: Mar 16-May 28]			
<b>Westbound</b>									
5210b2	Vlb(WB) - Mobilisation & Setup	12d	30-May-16	13-Jun-16	58d	[Gantt bars for 5210b2: May 30-Jun 13]			
12238b2	Vlb(WB) - Anchorage installation for subsequent E&M 1st Fix and VE Panel frame support (include protection) (2364m2)	27d	14-Jun-16	15-Jul-16	58d	[Gantt bars for 12238b2: Jun 14-Jul 15]			
<b>Eastbound</b>									
5224b2	Vlb(EB) - Mobilisation & Setup	12d	30-May-16	13-Jun-16	25d	[Gantt bars for 5224b2: May 30-Jun 13]			
12240b2	Vlb(EB) - Anchorage installation for subsequent E&M 1st Fix and VE Panel frame support (include protection) (2364m2)	27d	14-Jun-16	15-Jul-16	25d	[Gantt bars for 12240b2: Jun 14-Jul 15]			
5226b2	Vlb(EB) - Thermal Barrier installation (include protection removal) - 2 teams	33d	16-Jul-16	23-Aug-16	25d	[Gantt bars for 5226b2: Jul 16-Aug 23]			
<b>Satellite Control Point 3</b>									
<b>SCP3</b>									
3750	SCP3 - Possession of Portion Vb2	0d	31-May-16		-63d	[Milestone diamond at May 31]			
3752	SCP3 - Initial Site Survey	6d	31-May-16	06-Jun-16	-63d	[Gantt bars for 3752: May 31-Jun 06]			
3754	SCP3 - Erect Hoarding	6d	07-Jun-16	14-Jun-16	-63d	[Gantt bars for 3754: Jun 07-14]			
3756	SCP3 - Mobilisation and setup	12d	15-Jun-16	28-Jun-16	-63d	[Gantt bars for 3756: Jun 15-28]			
3758	SCP3 - Construct SCP RC Structures	24d	29-Jun-16	27-Jul-16	-63d	[Gantt bars for 3758: Jun 29-Jul 27]			

- ◆ Current Milestone
- Critical Remaining Work
- ▬ Level of Effort
- ▬ Remaining Work
- ▲ Baseline Milestone
- ▬ Project Baseline
- ▬ Actual Work

## Leighton Contractors (Asia) Limited Programme Update 27 (May 2016) THREE MONTH ROLLING

Project ID: H2613-U027  
 Baseline: DWP2d  
 Layout: Update Three Month Rolling U027  
 Page 16 of 23

Date	Revision	Checked	Appro...
20-Apr-16	U026	AT	CW
20-May-16	U027	AT	CW

Data Date: 20-May-16

# CWB(CC) - Commissioning Contract

TASK filters: 3 Months\_4, Not HL.

Activity ID	Activity Name	Original Duration	Start	Finish	Total Float	2016			
						May	Jun	Jul	Aug
3772	SCP3 - External Works	30d	21-Jul-16	24-Aug-16	39d				
3760	SCP3 - ABWF Works	24d	28-Jul-16	24-Aug-16	-63d				
<b>East Ventilation Building (EVB - related)</b>									
<b>Tunnel Section (EVB-related)</b>									
<b>Portion VII [CH3825 to CH4250] - Original Section in DWP Rev.2a</b>									
5240	VII - Initial Site Survey	43d	19-Feb-16 A	31-May-16	92d				
5238	Possession of Portion VII	0d	20-May-16		686d				
<b>Westbound</b>									
12242	VII(WB) - Anchorage installation for subsequent E&M 1st Fix and VE Panel frame support (include protection) (5100m2)	25d	27-May-16	25-Jun-16	92d				
5242	VII(WB) - Mobilisation & Setup	6d	01-Jun-16	07-Jun-16	92d				
5244	VII(WB) - Thermal Barrier installation (include protection removal) - 2 team	109d	24-Jun-16	02-Nov-16	6d				
<b>Eastbound</b>									
5256	VII(EB) - Mobilisation & Setup	0d	20-May-16	20-May-16	11d				
12244	VII(EB) - Anchorage installation for subsequent E&M 1st Fix and VE Panel frame support (include protection) (5100m2)	0d	20-May-16	20-May-16	686d				
5258	VII(EB) - Thermal Barrier installation (include protection removal) - 2 team	95d	24-Jun-16	17-Oct-16	0d				
<b>Portion VII [CH3800 to CH3911]</b>									
5240a2	VII - Initial Site Survey	12d	14-Apr-16 A	31-May-16	92d				
<b>Westbound</b>									
5242a2	VII(WB) - Mobilisation & Setup	6d	01-Jun-16	07-Jun-16	92d				
12242a2	VII(WB) - Anchorage installation for subsequent E&M 1st Fix and VE Panel frame support (include protection) (1332m2)	15d	08-Jun-16	25-Jun-16	92d				
<b>Eastbound</b>									
5256a2	VII(EB) - Mobilisation & Setup	6d	01-Jun-16	07-Jun-16	118d				
12244a2	VII(EB) - Anchorage installation for subsequent E&M 1st Fix and VE Panel frame support (include protection) (1332m2)	15d	08-Jun-16	25-Jun-16	118d				
<b>Portion VII [CH3911 to CH4250]</b>									
5240a	VII - Initial Site Survey	12d	19-Feb-16 A	07-May-16 A					

- ◆ Current Milestone
- Critical Remaining Work
- Level of Effort
- Remaining Work
- ▲ Baseline Milestone
- Project Baseline
- Actual Work

## Leighton Contractors (Asia) Limited Programme Update 27 (May 2016) THREE MONTH ROLLING

Project ID: H2613-U027  
 Baseline: DWP2d  
 Layout: Update Three Month Rolling U027  
 Page 17 of 23

Date	Revision	Checked	Appro...
20-Apr-16	U026	AT	CW
20-May-16	U027	AT	CW

Data Date: 20-May-16

# CWB(CC) - Commissioning Contract

TASK filters: 3 Months\_4, Not HL.

Activity ID	Activity Name	Original Duration	Start	Finish	Total Float	2016					
						May	Jun	Jul	Aug		
<b>Westbound</b>											
5242a	VII(WB) - Mobilisation & Setup	6d	20-May-16	26-May-16	16d						
12242a	VII(WB) - Anchorage installation for subsequent E&M 1st Fix and VE Panel frame support (include protection) (4068m2)	23d	27-May-16	23-Jun-16	16d						
5244a	VII(WB) - Thermal Barrier installation (include protection removal) - 2 team	57d	24-Jun-16	30-Aug-16	16d						
<b>Eastbound</b>											
5256a	VII(EB) - Mobilisation & Setup	6d	20-May-16	26-May-16	5d						
12244a	VII(EB) - Anchorage installation for subsequent E&M 1st Fix and VE Panel frame support (include protection) (4086m2)	23d	27-May-16	23-Jun-16	5d						
5258a	VII(EB) - Thermal Barrier installation (include protection removal) - 2 team	57d	24-Jun-16	30-Aug-16	5d						
<b>Portion IXd [CH4600 to CH4860]</b>											
<b>Westbound</b>											
12250	IXd(WB) - Anchorage installation for subsequent E&M 1st Fix and VE Panel frame support (include protection) (3300m2)	37d	07-Sep-15 A	22-Jun-16	39d						
<b>Eastbound</b>											
12252	IXd(EB) - Anchorage installation for subsequent E&M 1st Fix and VE Panel frame support (include protection) (3300m2)	37d	24-Aug-15 A	22-Jun-16	-74d						
5322	IXd(EB) - Thermal Barrier installation (include protection removal) - 1 team	87d	20-May-16	31-Aug-16	-133d						
<b>Portion IXa [CH4860 to CH5150]</b>											
<b>Westbound</b>											
12254	IXa(WB) - Anchorage installation for subsequent E&M 1st Fix and VE Panel frame support (include protection) (3288m2)	37d	08-Sep-15 A	10-Jun-16	43d						
5340	IXa(WB) - Thermal Barrier installation (include protection removal) - 1 team	97d	19-Jan-16 A	27-Jun-16	29d						
5324	MEP(WB) - (CH4860 to CH5150) E&M 1st Fix	16d	28-Jun-16	16-Jul-16	29d						
5326	MEP(WB) - (CH4860 to CH5150) E&M 2nd Fix (include Sump E)	32d	18-Jul-16	23-Aug-16	29d						
<b>Eastbound</b>											
12256	IXa(EB) - Anchorage installation for subsequent E&M 1st Fix and VE Panel frame support (include protection) (3288m2)	37d	24-Aug-15 A	10-Jun-16	-61d						
5354	IXa(EB) - Thermal Barrier installation (include protection removal) - 1 team	97d	07-Nov-15 A	27-Jun-16	-75d						
5342	MEP(EB) - (CH4860 to CH5150) E&M 1st Fix	16d	28-Jun-16	16-Jul-16	-75d						
5344	MEP(EB) - (CH4860 to CH5150) E&M 2nd Fix (include Sump E)	32d	18-Jul-16	23-Aug-16	-75d						

- Current Milestone
- Critical Remaining Work
- Level of Effort
- Remaining Work
- Baseline Milestone
- Project Baseline
- Actual Work

## Leighton Contractors (Asia) Limited Programme Update 27 (May 2016) THREE MONTH ROLLING

Project ID: H2613-U027  
Baseline: DWP2d  
Layout: Update Three Month Rolling U027  
Page 18 of 23

Date	Revision	Checked	Appro...
20-Apr-16	U026	AT	CW
20-May-16	U027	AT	CW

Data Date: 20-May-16

# CWB(CC) - Commissioning Contract

TASK filters: 3 Months\_4, Not HL.

Activity ID	Activity Name	Original Duration	Start	Finish	Total Float	2016											
						May			Jun			Jul			Aug		
<b>East Ventilation Building (EVB)</b>																	
<b>Establishment Works</b>																	
3402	EVB - Initial Site Survey	6d	16-Mar-16 A	01-Jun-16	-80d												
3404	EVB - Erect Hoarding	6d	28-Mar-16 A	01-Jun-16	-68d												
3406	EVB - Setup site monitoring station	6d	02-Jun-16	08-Jun-16	-80d												
3416	EVB - As-built survey for existing EVB substructures	6d	02-Jun-16	08-Jun-16	-80d												
3408	EVB - Baseline monitoring	12d	10-Jun-16	23-Jun-16	-80d												
<b>RC Structures and Green Roof</b>																	
13088	EVB - Plinths and cast-in items at Basement 2 (start date and duration are tentative, To be confirmed at later stage)	60d	09-Nov-15 A	21-Jun-16	46d												
13088b	EVB - Possession of Portion IXb/IXc relinquished back to Employer on 12 Apr 2016 until further notice	30d	12-Apr-16 A	30-May-16	-80d												
3410	EVB - Mobilisation & setup	6d	02-Jun-16	08-Jun-16	-68d												
<b>G/F (GLA - D)</b>																	
3412	EVB G/F - Formwork for column / walls	8d	24-Jun-16	04-Jul-16	-80d												
11508	EVB G/F - Rebar fixing for column / walls	6d	28-Jun-16	05-Jul-16	-80d												
11510	EVB G/F - Concrete for column / walls	1d	06-Jul-16	06-Jul-16	-80d												
11512	EVB G/F - Scaffolding for beam & slab	8d	07-Jul-16	15-Jul-16	-80d												
11514	EVB G/F - Decking / Formwork for beam & slab	8d	12-Jul-16	20-Jul-16	-80d												
11516	EVB G/F - Rebar for beam & slab	12d	15-Jul-16	28-Jul-16	-80d												
11518	EVB G/F - Close formwork for beam & slab	8d	29-Jul-16	06-Aug-16	-80d												
11520	EVB G/F - Concrete beam & slab	1d	08-Aug-16	08-Aug-16	-80d												
<b>G/F (GLA - D)</b>																	
<b>G-02 Fire Control Centre</b>																	
11550	EVB G-11 - Internal walls / Cast-in items	1d	08-Aug-16	08-Aug-16	-78d												
<b>G-06 Transformer Room 1</b>																	
11544	EVB G-05 - Internal walls / Cast-in items	1d	08-Aug-16	08-Aug-16	-66d												

- Current Milestone
- Critical Remaining Work
- Level of Effort
- Remaining Work
- Baseline Milestone
- Project Baseline
- Actual Work

## Leighton Contractors (Asia) Limited Programme Update 27 (May 2016) THREE MONTH ROLLING

Project ID: H2613-U027  
 Baseline: DWP2d  
 Layout: Update Three Month Rolling U027  
 Page 19 of 23

Date	Revision	Checked	Appro...
20-Apr-16	U026	AT	CW
20-May-16	U027	AT	CW



Data Date: 20-May-16

# CWB(CC) - Commissioning Contract

TASK filters: 3 Months\_4, Not HL.

Activity ID	Activity Name	Original Duration	Start	Finish	Total Float	2016													
						May			Jun			Jul			Aug				
<b>G-03 Transformer Room 2</b>																			
11538	EVB G-05 - Internal walls / Cast-in items	1d	08-Aug-16	08-Aug-16	-36d														
<b>G-10 HKE/HV Switch Room 1</b>																			
11548	EVB G-07 - Internal walls / Cast-in items	1d	08-Aug-16	08-Aug-16	-23d														
<b>G-07 HKE/HV Switch Room 2</b>																			
11546	EVB G-07 - Internal walls / Cast-in items	1d	08-Aug-16	08-Aug-16	-12d														
<b>G-04 Emergency Generator Room</b>																			
11540	EVB G-04 - Internal walls / Cast-in items	1d	08-Aug-16	08-Aug-16	-19d														
<b>G/F (GL A-D) Other Rooms / Corridors / Staircase</b>																			
11576	EVB G/F (GL A-C) - Remaining Internal walls / Cast-in items	1d	08-Aug-16	08-Aug-16	3d														
<b>1/F (GL A - D)</b>																			
3422	EVB 1/F - Formwork for column / walls	8d	09-Aug-16	17-Aug-16	-80d														
11524	EVB 1/F - Rebar fixing for column / walls	6d	12-Aug-16	18-Aug-16	-80d														
11526	EVB 1/F - Concrete for column / walls	1d	19-Aug-16	19-Aug-16	-80d														
<b>MEP &amp; ABWF Works</b>																			
<b>G/F (GL A - D)</b>																			
<b>Fire Control Centre (G-02)</b>																			
11724	MEP(EVB) - ABWF Works	12d	09-Aug-16	22-Aug-16	-78d														
<b>Administration Building (ADB)</b>																			
<b>Establishment Works (Portion Xa)</b>																			
3604	ADB - Erect Hoarding	12d	01-Apr-16 A	05-May-16 A															
3608	ADB - Baseline monitoring	12d	06-May-16 A	14-May-16 A															
<b>RC Structures (Portion Xa)</b>																			
13092a	ADB (Xa) - Construct secondary beams connected to the existing ground beams	36d	11-Apr-16 A	04-Jun-16	-73d														
13094	ADB (Xa) - G/F (GL A-F) - G/F slab construction	24d	06-Jun-16	05-Jul-16	-73d														

- ◆ Current Milestone
- Critical Remaining Work
- Level of Effort
- Remaining Work
- ▲ Baseline Milestone
- Project Baseline
- Actual Work

## Leighton Contractors (Asia) Limited Programme Update 27 (May 2016) THREE MONTH ROLLING

Project ID: H2613-U027  
 Baseline: DWP2d  
 Layout: Update Three Month Rolling U027  
 Page 20 of 23

Date	Revision	Checked	Appro...
20-Apr-16	U026	AT	CW
20-May-16	U027	AT	CW

Data Date: 20-May-16

# CWB(CC) - Commissioning Contract

TASK filters: 3 Months\_4, Not HL.

Activity ID	Activity Name	Original Duration	Start	Finish	Total Float	2016																	
						May	Jun	Jul	Aug														
13096	ADB (Xa) - G/F (GL F-N) - G/F slab construction	24d	06-Jul-16	02-Aug-16	-73d																		
13098	ADB (Xa) - G/F (GL P-R) - G/F slab construction	24d	03-Aug-16	30-Aug-16	-73d																		
<b>G/F</b>																							
<b>GL (A - F)</b>																							
3612	ADB (Xa) G/F (GL A-F) - Formwork for column / walls	8d	06-Jul-16	14-Jul-16	-67d																		
11808	ADB (Xa) G/F (GL A-F) - Rebar fixing for column / walls	12d	06-Jul-16	19-Jul-16	-67d																		
11810	ADB (Xa) G/F (GL A-F) - Concrete for column / walls	1d	20-Jul-16	20-Jul-16	-67d																		
11812	ADB (Xa) G/F (GL A-F) - Scaffolding for beam & slab	12d	21-Jul-16	03-Aug-16	-67d																		
11814	ADB (Xa) G/F (GL A-F) - Decking / Formwork for beam & slab	12d	26-Jul-16	08-Aug-16	-67d																		
11816	ADB (Xa) G/F (GL A-F) - Rebar for beam & slab	18d	29-Jul-16	18-Aug-16	-67d																		
11818	ADB (Xa) G/F (GL A-F) - Close formwork for beam & slab	12d	19-Aug-16	01-Sep-16	-67d																		
<b>GL (F - N)</b>																							
11844	ADB (Xa) G/F (GL F-N) - Formwork for column / walls	16d	09-Aug-16	26-Aug-16	-44d																		
<b>Establishment Works (Portion Xb)</b>																							
9986	ADB (Xb) - Erect Hoarding	12d	01-Apr-16 A	05-May-16 A																			
9990	ADB (Xb) - Baseline monitoring	12d	06-May-16 A	14-May-16 A																			
<b>RC Structures (Portion Xb)</b>																							
13102a	ADB (Xb) - Construct secondary beams connected to the existing ground beams	12d	11-Apr-16 A	02-Jun-16	-5d																		
13104	ADB (Xb) - G/F slab (GL A-F) - G/F slab construction	12d	03-Jun-16	17-Jun-16	-5d																		
13106	ADB (Xb) - G/F slab (GL F-N) - G/F slab construction	12d	18-Jun-16	02-Jul-16	12d																		
13108	ADB (Xb) - G/F slab (GL P-R) - G/F slab construction	12d	04-Jul-16	16-Jul-16	73d																		
<b>G/F</b>																							
<b>GL (A - F)</b>																							
12048	ADB (Xb) G/F (GL A-F) - Formwork for column / walls	4d	18-Jun-16	22-Jun-16	-5d																		
12050	ADB (Xb) G/F (GL A-F) - Rebar fixing for column / walls	3d	20-Jun-16	22-Jun-16	-5d																		

- ◆ Current Milestone
- Critical Remaining Work
- Level of Effort
- Remaining Work
- ▲ Baseline Milestone
- Project Baseline
- Actual Work

## Leighton Contractors (Asia) Limited Programme Update 27 (May 2016) THREE MONTH ROLLING

Project ID: H2613-U027  
 Baseline: DWP2d  
 Layout: Update Three Month Rolling U027  
 Page 21 of 23

Date	Revision	Checked	Appro...
20-Apr-16	U026	AT	CW
20-May-16	U027	AT	CW

Data Date: 20-May-16

# CWB(CC) - Commissioning Contract

TASK filters: 3 Months\_4, Not HL.

Activity ID	Activity Name	Original Duration	Start	Finish	Total Float	2016			
						May	Jun	Jul	Aug
12052	ADB (Xb) G/F (GL A-F) - Concrete for column / walls	1d	23-Jun-16	23-Jun-16	-5d				
12054	ADB (Xb) G/F (GL A-F) - Scaffolding for beam & slab	6d	24-Jun-16	30-Jun-16	-5d				
12056	ADB (Xb) G/F (GL A-F) - Decking / Formwork for beam & slab	4d	29-Jun-16	04-Jul-16	-5d				
12058	ADB (Xb) G/F (GL A-F) - Rebar for beam & slab	12d	04-Jul-16	16-Jul-16	-5d				
12060	ADB (Xb) G/F (GL A-F) - Close formwork for beam & slab	4d	18-Jul-16	21-Jul-16	-5d				
12062	ADB (Xb) G/F (GL A-F) - Concrete beam & slab	1d	22-Jul-16	22-Jul-16	-5d				
<b>GL (F - N)</b>									
12102	ADB (Xb) G/F (GL F-N) - Formwork for column / walls	8d	23-Jul-16	01-Aug-16	-5d				
12104	ADB (Xb) G/F (GL F-N) - Rebar fixing for column / walls	6d	26-Jul-16	01-Aug-16	-5d				
12106	ADB G/F (GL F-N) - Concrete for column / walls	1d	02-Aug-16	02-Aug-16	-5d				
12108	ADB (Xb) G/F (GL F-N) - Scaffolding for beam & slab	12d	03-Aug-16	16-Aug-16	-5d				
12110	ADB (Xb) G/F (GL F-N) - Decking / Formwork for beam & slab	8d	08-Aug-16	16-Aug-16	-5d				
12112	ADB (Xb) G/F (GL F-N) - Rebar for beam & slab	18d	11-Aug-16	31-Aug-16	-5d				
<b>1/F</b>									
<b>GL (A - D)</b>									
12150	ADB (Xb) 1/F (GL A-D) - Formwork for column / walls	4d	23-Jul-16	27-Jul-16	9d				
12152	ADB (Xb) 1/F (GL A-D) - Rebar fixing for column / walls	3d	25-Jul-16	27-Jul-16	9d				
12154	ADB (Xb) 1/F (GL A-D) - Concrete for column / walls	1d	28-Jul-16	28-Jul-16	9d				
12156	ADB (Xb) 1/F (GL A-D) - Scaffolding for beam & slab	6d	29-Jul-16	04-Aug-16	9d				
12158	ADB (Xb) 1/F (GL A-D) - Decking / Formwork for beam & slab	4d	03-Aug-16	06-Aug-16	9d				
12160	ADB (Xb) 1/F (GL A-D) - Rebar for beam & slab	12d	06-Aug-16	19-Aug-16	9d				
<b>East Ventilation Shaft (EVS)</b>									
<b>ABWF Works</b>									
3822	EVS - ABWF (Wet Trade) (Progress affected by high humidity and rainy weather)	60d	12-Apr-16 A	13-Jul-16	-126d				
3826	EVS - ABWF (Dry Trade)	60d	14-Jul-16	22-Sep-16	-114d				

- ◆ Current Milestone
- Critical Remaining Work
- Level of Effort
- Remaining Work
- ▲ Baseline Milestone
- Project Baseline
- Actual Work

## Leighton Contractors (Asia) Limited Programme Update 27 (May 2016) THREE MONTH ROLLING

Project ID: H2613-U027  
 Baseline: DWP2d  
 Layout: Update Three Month Rolling U027  
 Page 22 of 23

Date	Revision	Checked	Appro...
20-Apr-16	U026	AT	CW
20-May-16	U027	AT	CW

Data Date: 20-May-16

# CWB(CC) - Commissioning Contract

TASK filters: 3 Months\_4, Not HL.

Activity ID	Activity Name	Original Duration	Start	Finish	Total Float	2016					
						May	Jun	Jul	Aug		
<b>MEP Works</b>											
3834	MEP(EVS) - E&M Start	0d	14-Jul-16		-126d						
3836	MEP(EVS) - E&M 1st Fix	30d	14-Jul-16	17-Aug-16	-126d						
3838	MEP(EVS) - E&M 2nd Fix	30d	18-Aug-16	22-Sep-16	-126d						
<b>Satellite Control Points 4 / 5</b>											
<b>SCP5</b>											
3828	SCP5 - Mobilization for Area B	0d	20-May-16*		90d						
3848	SCP5 - Initial Site Survey	6d	20-May-16	26-May-16	90d						
3852	SCP5 - Erect Hoarding	6d	27-May-16	02-Jun-16	90d						
3868	SCP5 - Mobilisation and setup	12d	03-Jun-16	17-Jun-16	90d						
3870	SCP5 - Construct SCP RC Structures	24d	18-Jun-16	16-Jul-16	90d						
3872	SCP5 - ABWF Works	24d	18-Jul-16	13-Aug-16	96d						
3886	SCP5 - External Works	30d	18-Jul-16	20-Aug-16	90d						
<b>External Works</b>											
<b>Area A/B</b>											
10288a1	Area A TCSS equipment installation and cabling (Gantry FVMS 1) - After C18 gantry installation complete	40d	20-May-16	07-Jul-16	137d						
10288C1	C18 gantry installation complete (FVMS 1)	0d		20-May-16*	-5d						
10288a2	Area A TCSS equipment installation and cabling (Gantry ADS01) - Start date is tentative and to be confirmed	40d	15-Jul-16	30-Aug-16	91d						
10288C2	C18 gantry installation complete (ADS01)	0d		15-Jul-16*	0d						

- ◆ Current Milestone
- Critical Remaining Work
- Level of Effort
- Remaining Work
- ▲ Baseline Milestone
- Project Baseline
- Actual Work

## Leighton Contractors (Asia) Limited Programme Update 27 (May 2016) THREE MONTH ROLLING

Project ID: H2613-U027  
 Baseline: DWP2d  
 Layout: Update Three Month Rolling U027  
 Page 23 of 23

Date	Revision	Checked	Appro...
20-Apr-16	U026	AT	CW
20-May-16	U027	AT	CW

Activity ID	Activity Name	Rem Dur	Start	Finish	Total Float	2016															
						June				July				August							
						22	29	05	12	19	26	03	10	17	24	31	07	14			
<b>3MRP - May 2016 to Aug 2016</b>						111	01-Jun-15 A	30-Sep-16	353												
<b>02 - PRE-CONSTRUCTION WORKS</b>						106	20-Jun-15 A	23-Sep-16	358												
<b>02.3 - Method Statement / Shop Drawings</b>						91	20-Jun-15 A	06-Sep-16	373												
0230-1380	MS Landscape Deck Structure - Submission	11	20-Jun-15 A	31-May-16	371	MS Landscape Deck Structure - Submission															
0230-1390	MS Landscape Deck Structure - ER Review & Comment	28	31-May-16	28-Jun-16	371	MS Landscape Deck Structure - ER Review & Comment															
0230-1400	MS Landscape Deck Structure - Resubmission	28	28-Jun-16	26-Jul-16	371	MS Landscape Deck Structure - Resubmission															
0230-1410	MS Landscape Deck Structure - ER Approval	28	26-Jul-16	23-Aug-16	371	MS Landscape Deck Structure - ER Approval															
0240-1210	HGHK Permanent Carpark Design - BD Approval	9	21-Mar-16 A	28-May-16	62	HGHK Permanent Carpark Design - BD Approval															
0240-1220	HGHK Permanent Carpark Design- BD Approval Received	0		28-May-16	62	◆ HGHK Permanent Carpark Design- BD Approval Received															
0240-1230	HGHK Carpark - Application for BD Consent (BA8)	28	29-May-16	25-Jun-16	62	HGHK Carpark - Application for BD Consent (BA8)															
0240-1240	HGHK Carpark - BD Consent Received	0		25-Jun-16	62	◆ HGHK Carpark - BD Consent Received															
0240-1250	HGHK Carpark - Commencement Notification to BD (BA10)	7	26-Jun-16	02-Jul-16	62	HGHK Carpark - Commencement Notification to BD (BA10)															
0240-1270	Landscaping Design - Submission	25	20-Apr-16 A	14-Jun-16	451	Landscaping Design - Submission															
0240-1280	Landscaping Design - ER Review/Resubmission	28	14-Jun-16	12-Jul-16	451	Landscaping Design - ER Review/Resubmission															
0240-1290	Landscaping Design - ER Approval	28	12-Jul-16	09-Aug-16	451	Landscaping Design - ER Approval															
0240-1295	Landscaping Design - Fabrication & Delivery	28	09-Aug-16	06-Sep-16	451	Landscaping Design - Fabrication & Delivery															
0240-1298	Green Roof Minimum 2 years Establishment - Start	0	17-Jun-16		65	◆ Green Roof Minimum 2 years Establishment - Start															
0240-2460	MS for for trial erection of green roof - Resubmission	14	04-Apr-16 A	02-Jun-16	77	MS for for trial erection of green roof - Resubmission															
0240-2470	MS for for trial erection of green roof - No Adverse Comment	15	02-Jun-16	17-Jun-16	77	MS for for trial erection of green roof - No Adverse Comment															
<b>02.5 - Bridge Segment/Beam Off-site Precasting</b>						106	20-May-16	23-Sep-16	58												
0250-3860	Bridge F1B2 - Abut D12 Segment - 6 nos. (S2)	19	20-May-16	11-Jun-16	33	Bridge F1B2 - Abut D12 Segment - 6 nos. (S2)															
0250-3880	Bridge F1B2 - Pier F1B2 Segment - 13 nos. (S1)	40	20-May-16	07-Jul-16	58	Bridge F1B2 - Pier F1B2 Segment - 13 nos. (S1)															
0250-3900	Bridge F1B2 - Pier F2B2 Segment - 11 nos. (S1)	28	15-Jul-16	16-Aug-16	58	Bridge F1B2 - Pier F2B2 Segment - 11 nos. (S1)															
0250-3920	Bridge F1B2 - Pier F3B2 Segment - 6 nos. (S2)	19	20-Jun-16	12-Jul-16	33	Bridge F1B2 - Pier F3B2 Segment - 6 nos. (S2)															
0250-3940	Bridge F2B - Pier F3B2 Segment - 5 nos. (S2)	16	20-Jul-16	06-Aug-16	33	Bridge F2B - Pier F3B2 Segment - 5 nos. (S2)															
0250-3960	Bridge F2B - Pier F4B Segment - 13 nos. (S1)	32	17-Aug-16	23-Sep-16	58	Bridge F2B - Pier F4B Segment - 13 nos. (S1)															
0250-3980	Bridge F2B - Pier F5B Segment - 6 nos. (S2)	19	15-Aug-16	05-Sep-16	33	Bridge F2B - Pier F5B Segment - 6 nos. (S2)															
<b>05 - SECTION 2 &amp; 2A OF THE WORKS</b>						46	20-May-16	14-Jul-16	20												
<b>05.1 - Cut &amp; Cover Tunnel Ch 4855-4932 (APS Footprint)</b>						46	20-May-16	14-Jul-16	20												
<b>05.1.6 - EVB Sub-structure &amp; Tunnel</b>						46	20-May-16	14-Jul-16	20												
<b>05.1.6 - EVB Outstanding Works</b>						15	20-May-16	06-Jun-16	0												
0515-3091	EVB Works(Zone 2) - Construction Stair 01	7	20-May-16	27-May-16	8	EVB Works(Zone 2) - Construction Stair 01															
0515-3093	EVB Works(Zone 2) -Installation of Sheetpile - G.L > 6-7/A-B	2	20-May-16	21-May-16	0	EVB Works(Zone 2) -Installation of Sheetpile - G.L > 6-7/A-B															
0515-3094	EVB Works(Zone 2) -Demolition of South D-Wall + Excavation - G.L > 6-7/A-B	2	23-May-16	24-May-16	0	EVB Works(Zone 2) -Demolition of South D-Wall + Excavation - G.L > 6-7/A-B															
0515-3095	EVB Works(Zone 2) -Mass Concrete + Waterproofing	2	25-May-16	26-May-16	0	EVB Works(Zone 2) -Mass Concrete + Waterproofing															
0515-3096	EVB Works(Zone 2) -Construction Wall and Stair 06 G.L > 6-7/A-B	9	27-May-16	06-Jun-16	0	EVB Works(Zone 2) -Construction Wall and Stair 06 G.L > 6-7/A-B															
0515-3098	EVB Works(Zone 4-5 & Zone 2) - Clearing & Demobilization of EVB	2	04-Jun-16	06-Jun-16	0	EVB Works(Zone 4-5 & Zone 2) - Clearing & Demobilization of EVB															
0515-3099	Complete EVB Outstanding Works	0		06-Jun-16	0	◆ Complete EVB Outstanding Works															
<b>05.1.7 - Connection to EVA</b>						46	20-May-16	14-Jul-16	20												

- Remaining Level of Effort
- Actual Level of Effort
- Actual Work
- Remaining Work
- Critical Remaining Work
- ◆ Milestone

**Contract HY/2009/19**  
**Three Months Rolling Programme (20 May to 19 Aug 2016)**

Activity ID	Activity Name	Rem Dur	Start	Finish	Total Float	2016											
						June				July				August			
						22	29	05	12	19	26	03	10	17	24	31	07
0515-3360	EVA - WATERPROOFING PREP - Break mass concrete by hand held hydraulic breaker at the outer corner of D-wall and EVA	5	20-May-16	25-May-16	20	EVA - WATERPROOFING PREP - Break mass concrete by hand held hydraulic breaker at the outer corne											
0515-3370	EVA - WATERPROOFING PREP - Break mass concrete by hand held hydraulic breaker to expose couplers	5	26-May-16	31-May-16	20	EVA - WATERPROOFING PREP - Break mass concrete by hand held hydraulic breaker to expose c											
0515-3380	EVA - SLAB CONSTRUCTION - Falsework removal and cleaning	2	01-Jun-16	02-Jun-16	20	EVA - SLAB CONSTRUCTION - Falsework removal and cleaning											
0515-3390	EVA - SLAB CONSTRUCTION - Install the water proofing system & Testing	2	03-Jun-16	04-Jun-16	20	EVA - SLAB CONSTRUCTION - Install the water proofing system & Testing											
0515-3400	EVA - SLAB CONSTRUCTION - Core hole and install steel bar	2	06-Jun-16	07-Jun-16	20	EVA - SLAB CONSTRUCTION - Core hole and install steel bar											
0515-3410	EVA - SLAB CONSTRUCTION - Re-bar fixing	3	08-Jun-16	11-Jun-16	20	EVA - SLAB CONSTRUCTION - Re-bar fixing											
0515-3420	EVA - SLAB CONSTRUCTION - Erection of formwork	2	13-Jun-16	14-Jun-16	20	EVA - SLAB CONSTRUCTION - Erection of formwork											
0515-3430	EVA - SLAB CONSTRUCTION - Concreting	1	15-Jun-16	15-Jun-16	20	EVA - SLAB CONSTRUCTION - Concreting											
0515-3440	EVA - SLAB CONSTRUCTION - Removal of formwork	1	16-Jun-16	16-Jun-16	20	EVA - SLAB CONSTRUCTION - Removal of formwork											
0515-3450	EVA - WALL & ROOF SLAB CONSTRUCTION - Erection of falsework	4	17-Jun-16	21-Jun-16	20	EVA - WALL & ROOF SLAB CONSTRUCTION - Erection of falsework											
0515-3460	EVA - WALL & ROOF SLAB CONSTRUCTION - Install the water proofing system	3	22-Jun-16	24-Jun-16	20	EVA - WALL & ROOF SLAB CONSTRUCTION - Install the water pro											
0515-3470	EVA - WALL & ROOF SLAB CONSTRUCTION - Rebar fixing	4	25-Jun-16	29-Jun-16	20	EVA - WALL & ROOF SLAB CONSTRUCTION - Rebar fixing											
0515-3480	EVA - WALL & ROOF SLAB CONSTRUCTION - Erection of formwork	3	30-Jun-16	04-Jul-16	20	EVA - WALL & ROOF SLAB CONSTRUCTION - Erectio											
0515-3490	EVA - WALL & ROOF SLAB CONSTRUCTION - Concreting	1	05-Jul-16	05-Jul-16	20	EVA - WALL & ROOF SLAB CONSTRUCTION - Conc											
0515-3510	EVA - WALL CONSTRUCTION (to 4.2mPD) - Erection of falsework	1	06-Jul-16	06-Jul-16	20	EVA - WALL CONSTRUCTION (to 4.2mPD) - Erectio											
0515-3530	EVA - WALL CONSTRUCTION (to 4.2mPD) - Rebar fixing	1	07-Jul-16	07-Jul-16	20	EVA - WALL CONSTRUCTION (to 4.2mPD) - Reba											
0515-3540	EVA - WALL CONSTRUCTION (to 4.2mPD) - Erection of formwork	1	08-Jul-16	08-Jul-16	20	EVA - WALL CONSTRUCTION (to 4.2mPD) - Erec											
0515-3550	EVA - WALL CONSTRUCTION (to 4.2mPD) - Concreting	1	09-Jul-16	09-Jul-16	20	EVA - WALL CONSTRUCTION (to 4.2mPD) - Co											
0515-3560	EVA - WALL CONSTRUCTION (to 4.2mPD) - Removal of formwork	1	11-Jul-16	11-Jul-16	20	EVA - WALL CONSTRUCTION (to 4.2mPD) - R											
0515-3570	EVA - WALL CONSTRUCTION (to 4.2mPD) - Install the water proofing system & Testing	2	12-Jul-16	13-Jul-16	20	EVA - WALL CONSTRUCTION (to 4.2mPD)											
0515-3580	EVA - WALL CONSTRUCTION (to 4.2mPD) - Place concrete screeding	1	14-Jul-16	14-Jul-16	20	EVA - WALL CONSTRUCTION (to 4.2mPD)											
0515-3590	COMPLETE EVA WORKS	0		14-Jul-16*	20	COMPLETE EVA WORKS											
<b>06 - SECTION 3 OF THE WORKS</b>		24	20-May-16	17-Jun-16	10												
<b>06.3 - Admin Building</b>		24	20-May-16	17-Jun-16	10												
<b>Admin Building - Outstanding Works After Hanover to CC</b>		10	20-May-16	31-May-16	0												
0630-2705	Construct Road Pavement Between P31-32 within Porion VB incl sub-base	7	20-May-16	27-May-16	3	Construct Road Pavement Between P31-32 within Porion VB incl sub-base											
0630-2770	Admin Building - Complete Outstanding Works	0		31-May-16*	0	Admin Building - Complete Outstanding Works											
<b>Admin Building - Ground Beams to be Completed after CC Basement (Timing to be Confirmed)</b>		24	20-May-16	17-Jun-16	10												
0630-1880	Grd. Beam - (GL > P-R) - Removal of Existing Sheet Piles	4	20-May-16	24-May-16	10	Grd. Beam - (GL > P-R) - Removal of Existing Sheet Piles											
0630-1900	Grd. Beam - (GL > P-R) - Excavate to formation level + Blinding Layer Casting	5	25-May-16	30-May-16	10	Grd. Beam - (GL > P-R) - Excavate to formation level + Blinding Layer Casting											
0630-1920	Grd. Beam - (GL > P-R) - Install Capping Plate	6	30-May-16	04-Jun-16	10	Grd. Beam - (GL > P-R) - Install Capping Plate											
0630-1940	Grd. Beam - (GL > P-R) - Rebar Fixing for Beam	7	02-Jun-16	10-Jun-16	10	Grd. Beam - (GL > P-R) - Rebar Fixing for Beam											
0630-1960	Grd. Beam - (GL > P-R) - Erect Formworks for Beam	4	11-Jun-16	15-Jun-16	10	Grd. Beam - (GL > P-R) - Erect Formworks for Beam											
0630-1980	Grd. Beam - (GL > P-R) - Cast Concrete for Beam	1	16-Jun-16	16-Jun-16	10	Grd. Beam - (GL > P-R) - Cast Concrete for Beam											
0630-2000	Grd. Beam - (GL > P-R) - Formworks Removal	1	17-Jun-16	17-Jun-16	10	Grd. Beam - (GL > P-R) - Formworks Removal											
0630-2036	ADB(Pier29-30) - West Basement (GL > 1-2.0/C-F) - 1st Layer Excav Approx. +2.5mPD	3	20-May-16	23-May-16	11	ADB(Pier29-30) - West Basement (GL > 1-2.0/C-F) - 1st Layer Excav Approx. +2.5mPD											
0630-2037	ADB(Pier29-30) - West Basement (GL > 1-2.0/C-F) - Install Strut and Waling Support	4	24-May-16	27-May-16	11	ADB(Pier29-30) - West Basement (GL > 1-2.0/C-F) - Install Strut and Waling Support											
0630-2038	ADB(Pier29-30) - West Basement (GL > 1-2.0/C-F) - 2nd Layer Excav to Ground Beam Formation level + blinding	3	28-May-16	31-May-16	11	ADB(Pier29-30) - West Basement (GL > 1-2.0/C-F) - 2nd Layer Excav to Ground Beam Formation											

Remaining Level of Effort    ◆ Milestone  
 Actual Level of Effort  
 Actual Work  
 Remaining Work  
 Critical Remaining Work

**Contract HY/2009/19**  
**Three Months Rolling Programme (20 May to 19 Aug 2016)**



Activity ID	Activity Name	Rem Dur	Start	Finish	Total Float	2016											
						June				July				August			
						22	29	05	12	19	26	03	10	17	24	31	07
1021-2400	Pier 27 > Tie Beam. - Post Drilling & Rebar Fixing Works	7	27-May-16	03-Jun-16	68												
1021-2410	Pier 27 > Tie Beam. - Formworks & Concreting Works	4	04-Jun-16	08-Jun-16	68												
1021-2420	Pier 27 > Tie Beam. - Remove Fwk & Backfilling	4	10-Jun-16	14-Jun-16	68												
<b>10.2.2 - Pier Construction</b>		<b>20</b>	<b>20-May-16</b>	<b>13-Jun-16</b>	<b>42</b>												
<b>Pier 38 to 43</b>		<b>20</b>	<b>20-May-16</b>	<b>13-Jun-16</b>	<b>42</b>												
1021-2171	Pier 42 (F7C) - Remove formwork and prepare construction joint	2	20-May-16	21-May-16	8												
1021-2172	Pier 42 (F7C) - Remove formwork and scaffolding	1	23-May-16	23-May-16	14												
1021-2173	Pier 42 (F7C) - Remove structural steel of falsework	2	24-May-16	25-May-16	14												
1021-2200	Pier 42 (F7C) Install Bearing	9	23-May-16	01-Jun-16	8												
1021-2246	Pier 43 (F8C) - Fixing Reinforcement for Crosshead Bottom Layer	1	20-May-16	20-May-16	42												
1021-2247	Pier 43 (F8C) - Installation of case-in items	3	21-May-16	24-May-16	42												
1021-2248	Pier 43 (F8C) - Fixing Reinforcement for Crosshead Upper Layer	2	25-May-16	26-May-16	42												
1021-2249	Pier 43 (F8C) - Installation of tie-bolts	1	27-May-16	27-May-16	42												
1021-2250	Pier 43 (F8C) - Pouring concrete for crosshead	2	28-May-16	30-May-16	42												
1021-2251	Pier 43 (F8C) - Remove formwork and prepare construction joint	2	31-May-16	01-Jun-16	42												
1021-2252	Pier 43 (F8C) - Remove formwork and scaffolding	3	06-Jun-16	08-Jun-16	43												
1021-2253	Pier 43 (F8C) - Remove structural steel of falsework	2	10-Jun-16	11-Jun-16	43												
1021-2290	Pier 43 (F8C) Install Bearing	9	02-Jun-16	13-Jun-16	42												
<b>10.2.3 - Bridge Construction</b>		<b>91</b>	<b>07-Apr-16 A</b>	<b>05-Sep-16</b>	<b>20</b>												
<b>Bridge C1</b>		<b>51</b>	<b>07-Apr-16 A</b>	<b>20-Jul-16</b>	<b>42</b>												
1022-1002.1	Bridge C1 - Construction (Pier 17 - 21) > Rebar Fixing of Deck + Diaphragm	3	30-Apr-16 A	23-May-16	44												
1022-1002.2	Bridge C1 - Construction (Pier 17 - 21) > Deck Concreting	4	07-May-16 A	24-May-16	44												
1022-1002.3	Bridge C1 - Construction (Pier 17 - 21) > Bridge Deck Wing Extension	14	07-May-16 A	04-Jun-16	48												
1022-1003	Bridge C1 - Construct South Parapet Pier 17-21 W/B - Precast Skin Wall Installation	12	25-May-16	07-Jun-16	44												
1022-1003.1	Bridge C1 - Construct South Parapet Pier 17-21 W/B - Rebar & Cast-in Fixing	7	08-Jun-16	16-Jun-16	44												
1022-1003.2	Bridge C1 - Construct South Parapet Pier 17-21 W/B - Shutter Installation	7	17-Jun-16	24-Jun-16	44												
1022-1003.3	Bridge C1 - Construct South Parapet Pier 17-21 W/B - Concreting	8	17-Jun-16	25-Jun-16	44												
1022-1004	Bridge C1 - Construct Int. Single Noise Encl. (South) Pier 17-20 Stage 1 - Base Plate & Main Post	8	27-Jun-16	06-Jul-16	44												
1022-1004.1	Bridge C1 - Construct Int. Single Noise Encl. (South) Pier 17-20 Stage 1 - Main Frames	8	02-Jul-16	11-Jul-16	44												
1022-1004.2	Bridge C1 - Construct Int. Single Noise Encl. (South) Pier 17-20 Stage 1 - Secondary Frames & Panels	8	09-Jul-16	18-Jul-16	44												
1022-1005	Bridge C1 - Construct Int. Single Noise Encl. (North & South) Pier 20-21 - Base Plate & Main Post	8	27-Jun-16	06-Jul-16	44												
1022-1005.1	Bridge C1 - Construct Int. Single Noise Encl. (North & South) Pier 20-21 - Main Frames	8	02-Jul-16	11-Jul-16	44												
1022-1005.2	Bridge C1 - Construct Int. Single Noise Encl. (North & South) Pier 20-21 - Secondary Frames & Panels	8	09-Jul-16	18-Jul-16	44												
1022-2753	Bridge C1 - Construction (Pier 21 - 22) > Wing Extension - North/South Wing	12	07-Apr-16 A	02-Jun-16	42												
1022-2754	Bridge C1 - Construction (Pier 21- 22) > Construct Parapet ( North & South)	14	03-Jun-16	20-Jun-16	42												
1022-2755	Bridge C1 - Construction (Pier 21-22) > Install Street Furniture/GullyEtc.	14	03-Jun-16	20-Jun-16	67												
1022-2756	Bridge C1 - Construction (Pier 21-22) > Install MJ at Pier 22	7	21-Jun-16	28-Jun-16	60												
1022-2763	Bridge C1 - Construct Int. Single Noise Encl. (North & South) Pier 21-22 - Base Plate & Main Post	8	21-Jun-16	29-Jun-16	42												

- Remaining Level of Effort ◆ ◆ Milestone
- Actual Level of Effort
- Actual Work
- Remaining Work
- Critical Remaining Work

**Contract HY/2009/19**  
**Three Months Rolling Programme (20 May to 19 Aug 2016)**





Activity ID	Activity Name	Rem Dur	Start	Finish	Total Float	2016											
						June				July				August			
						22	29	05	12	19	26	03	10	17	24	31	07
1022-1552.3	Bridge C4 - Construct South Parapet - Concreting	2	13-May-16 A	23-May-16	80	■ Bridge C4 - Construct South Parapet - Concreting											
1022-1558	Bridge C4 - Construct Int. Single Noise Encl. Bridge C4 - Base Plate & Main Post	8	24-May-16	01-Jun-16	80	■ Bridge C4 - Construct Int. Single Noise Encl. Bridge C4 - Base Plate & Main Post											
1022-1558.1	Bridge C4 - Construct Int. Single Noise Encl. Bridge C4 - Main Frames	8	31-May-16	08-Jun-16	80	■ Bridge C4 - Construct Int. Single Noise Encl. Bridge C4 - Main Frames											
1022-1558.2	Bridge C4 - Construct Int. Single Noise Encl. Bridge C4 - Secondary Farmes & Panels	8	08-Jun-16	17-Jun-16	80	■ Bridge C4 - Construct Int. Single Noise Encl. Bridge C4 - Secondary Farmes & Panels											
1022-1564	Bridge C4 - Deck Road Waterproofing, Surfacing & Marking	7	18-Jun-16	25-Jun-16	80	■ Bridge C4 - Deck Road Waterproofing, Surfacing & Marking											
<b>Bridge C5</b>		<b>49</b>	<b>12-May-16 A</b>	<b>18-Jul-16</b>	<b>62</b>												
1022-3942.1	Bridge C5 - Construct South Parapet - Precast Skin Wall Installation	6	12-May-16 A	26-May-16	5	■ Bridge C5 - Construct South Parapet - Precast Skin Wall Installation											
1022-3942.2	Bridge C5 - Construct South Parapet - Rebar & Cast-in Fixing	7	27-May-16	03-Jun-16	5	■ Bridge C5 - Construct South Parapet - Rebar & Cast-in Fixing											
1022-3942.3	Bridge C5 - Construct South Parapet - Shutter Installation	7	04-Jun-16	13-Jun-16	5	■ Bridge C5 - Construct South Parapet - Shutter Installation											
1022-3942.4	Bridge C5 - Construct South Parapet - Concreting	8	04-Jun-16	14-Jun-16	5	■ Bridge C5 - Construct South Parapet - Concreting											
1022-3942.5	Bridge C5 - Construct North Parapet - Precast Skin Wall Installation	6	12-May-16 A	26-May-16	5	■ Bridge C5 - Construct North Parapet - Precast Skin Wall Installation											
1022-3942.6	Bridge C5 - Construct North Parapet - Rebar & Cast-in Fixing	7	27-May-16	03-Jun-16	5	■ Bridge C5 - Construct North Parapet - Rebar & Cast-in Fixing											
1022-3942.7	Bridge C5 - Construct North Parapet - Shutter Installation	7	04-Jun-16	13-Jun-16	5	■ Bridge C5 - Construct North Parapet - Shutter Installation											
1022-3942.8	Bridge C5 - Construct North Parapet - Concreting	8	04-Jun-16	14-Jun-16	5	■ Bridge C5 - Construct North Parapet - Concreting											
1022-3953	Bridge C5 - Construct Int. Single Noise Encl. Bridge C5 - Base Plate & Main Post	8	15-Jun-16	23-Jun-16	5	■ Bridge C5 - Construct Int. Single Noise Encl. Bridge C5 - Base Plate &											
1022-3953.1	Bridge C5 - Construct Int. Single Noise Encl. Bridge C5 - Main Frames	8	22-Jun-16	30-Jun-16	62	■ Bridge C5 - Construct Int. Single Noise Encl. Bridge C5 - Main											
1022-3953.2	Bridge C5 - Construct Int. Single Noise Encl. Bridge C5 - Secondary Farmes & Panels	8	30-Jun-16	09-Jul-16	62	■ Bridge C5 - Construct Int. Single Noise Encl. Bridge											
1022-3954	Bridge C5 - Deck Road Waterproofing, Surfacing & Marking	7	11-Jul-16	18-Jul-16	62	■ Bridge C5 - Deck Road Waterproofing											
<b>Bridge F1C</b>		<b>59</b>	<b>27-May-16</b>	<b>05-Aug-16</b>	<b>46</b>												
1022.1-4245	Bridge F1C - Construct South Parapet - Precast Skin Wall Installation	14	27-May-16	13-Jun-16	32	■ Bridge F1C - Construct South Parapet - Precast Skin Wall Installation											
1022.1-4245.1	Bridge F1C - Construct South Parapet - Rebar & Cast-in Fixing	12	11-Jun-16	24-Jun-16	46	■ Bridge F1C - Construct South Parapet - Rebar & Cast-in Fixing											
1022.1-4245.2	Bridge F1C - Construct South Parapet - Shutter Installation	7	24-Jun-16	02-Jul-16	46	■ Bridge F1C - Construct South Parapet - Shutter Installation											
1022.1-4245.3	Bridge F1C - Construct South Parapet - Concreting	8	24-Jun-16	04-Jul-16	46	■ Bridge F1C - Construct South Parapet - Concreting											
1022.1-4247	Bridge F1C - Construct Int. Double Noise Encl. Bridge F1C - Base Plate & Main Post	8	05-Jul-16	13-Jul-16	46	■ Bridge F1C - Construct Int. Double Noise Encl											
1022.1-4248	Bridge F1C - Construct Int. Double Noise Encl. Bridge F1C - Main Frames	8	12-Jul-16	20-Jul-16	46	■ Bridge F1C - Construct Int. Double N											
1022.1-4249	Bridge F1C - Construct Int. Double Noise Encl. Bridge F1C - Secondary Farmes & Panels	8	20-Jul-16	28-Jul-16	46	■ Bridge F1C - Construct Int											
1022.1-4251	Bridge F1C - Bridge F1C Deck Road Waterproofing, Surfacing & Marking	7	29-Jul-16	05-Aug-16	46	■ Bridge F1C - Br											
<b>Bridge F2C</b>		<b>81</b>	<b>20-May-16</b>	<b>24-Aug-16</b>	<b>30</b>												
1022.1-4318	Pier 38(MJ Right) - End Span Erection - Hanging Segments	2	20-May-16	21-May-16	0	■ Pier 38(MJ Right) - End Span Erection - Hanging Segments											
1022.1-4321	Pier 38(MJ Right) - End Span Erection	1	23-May-16	23-May-16	0	■ Pier 38(MJ Right) - End Span Erection											
1022.1-4324	Pier 38(MJ Right) - End Span Erection - Stitching	3	24-May-16	26-May-16	0	■ Pier 38(MJ Right) - End Span Erection - Stitching											
1022.1-4327	Pier 38(MJ Right) - End Span Erection - Formwork Fixing for and Grouting for Bearing	3	24-May-16	26-May-16	32	■ Pier 38(MJ Right) - End Span Erection - Formwork Fixing for and Grouting for Bearing											
1022.1-4330	Pier 38(MJ Right) - End Span Erection - Prestress Span Tendons	1	27-May-16	27-May-16	32	■ Pier 38(MJ Right) - End Span Erection - Prestress Span Tendons											
1022.1-4333	Pier 38(MJ Right) - End Span Erection - Remove Hanger Bar & Hanger Beam & Stitching Formwork	1	28-May-16	28-May-16	32	■ Pier 38(MJ Right) - End Span Erection - Remove Hanger Bar & Hanger Beam & Stitching Formwork											
1022.1-4336	Pier 40(MJ Left) - End Span Erection - Hanging Segments	2	24-May-16	25-May-16	4	■ Pier 40(MJ Left) - End Span Erection - Hanging Segments											
1022.1-4339	Pier 40(MJ Left) - End Span Erection - Erect Segments	1	26-May-16	26-May-16	4	■ Pier 40(MJ Left) - End Span Erection - Erect Segments											
1022.1-4342	Pier 40(MJ Left) - End Span Erection - Stitching	3	27-May-16	30-May-16	4	■ Pier 40(MJ Left) - End Span Erection - Stitching											
1022.1-4345	Pier 40(MJ Left) - End Span Erection - Formwork Fixing for and Grouting for Bearing	3	27-May-16	30-May-16	4	■ Pier 40(MJ Left) - End Span Erection - Formwork Fixing for and Grouting for Bearing											

■ Remaining Level of Effort    ◆ Milestone  
■ Actual Level of Effort  
■ Actual Work  
■ Remaining Work  
■ Critical Remaining Work

**Contract HY/2009/19**  
**Three Months Rolling Programme (20 May to 19 Aug 2016)**



Activity ID	Activity Name	Rem Dur	Start	Finish	Total Float	2016												
						June						July				August		
						22	29	05	12	19	26	03	10	17	24	31	07	14
1022.1-4470	Pier 43 - Install Pier Segment - Install MS at F8C/Pier43	1	09-Jul-16	09-Jul-16	0													■ Pier 43 - Install Pier Segment - Install MS at F8C/
1022.1-4481	Pier 42 - T Span Erection (5 pairs)	3	29-Jun-16	02-Jul-16	5													■ Pier 42 - T Span Erection (5 pairs)
1022.1-4482	Bridge F6-F7 T Span Stitching - Install Clamping Beam and Adjust T span (F6-F7)	1	04-Jul-16	04-Jul-16	5													■ Bridge F6-F7 T Span Stitching - Install Clamping Beam a
1022.1-4483	Bridge F6-F7 T Span Stitching - Stitching (F6-F7)	2	05-Jul-16	06-Jul-16	5													■ Bridge F6-F7 T Span Stitching - Stitching (F6-F7)
1022.1-4484	Bridge F6-F7 T Span Stitching - Prestress Span Tendons (F6-F7)	1	07-Jul-16	07-Jul-16	5													■ Bridge F6-F7 T Span Stitching - Prestress Span Tend
1022.1-4485	Pier 43(MJ Left) - End Span Erection - Hanging Segments	2	11-Jul-16	12-Jul-16	0													■ Pier 43(MJ Left) - End Span Erection - Hangir
1022.1-4486	Pier 43(MJ Left) - End Span Erection - Erect Segments	1	13-Jul-16	13-Jul-16	0													■ Pier 43(MJ Left) - End Span Erection - Erect
1022.1-4487	Pier 43(MJ Left) - End Span Erection - Stitching	3	14-Jul-16	16-Jul-16	0													■ Pier 43(MJ Left) - End Span Erection - S
1022.1-4488	Pier 43(MJ Left) - End Span Erection - Formwork Fixing for and Grouting for Bearing	3	14-Jul-16	16-Jul-16	5													■ Pier 43(MJ Left) - End Span Erection - F
1022.1-4489	Pier 43(MJ Left) - End Span Erection - Prestress Span Tendons	1	18-Jul-16	18-Jul-16	5													■ Pier 43(MJ Left) - End Span Erection -
1022.1-4490	Pier 43(MJ Left) - End Span Erection - Remove Hanger Bar & Hanger Beam & Stitching Formwork	1	19-Jul-16	19-Jul-16	5													■ Pier 43(MJ Left) - End Span Erection
1022.1-4520	Prestress Extenral Tendon Bridge F3C	10	14-Jul-16	25-Jul-16	0													■ Prestress Extenral Tendon Bri
1022.1-4525	Bridge F3C - Construct South Parapet (83m)	15	26-Jul-16	11-Aug-16	14													■ Bridge F
1022.1-4530	Bridge F3C - Construct Int. Double Noise Encl. Bridge F3C (83m)	21	12-Aug-16	05-Sep-16	14													■
<b>Bridge F5</b>		<b>35</b>	<b>20-Jul-16</b>	<b>29-Aug-16</b>	<b>0</b>													
1022.1-4540	LG-A Launching - Deactivate the MS at F6C	1	20-Jul-16	20-Jul-16	8													■ LG-A Launching - Deactivate the M
1022.1-4545	LG-A Launching - Install the LGA-MS-Modified at F9	1	21-Jul-16	21-Jul-16	8													■ LG-A Launching - Install the LGA-I
1022.1-4550	LG-A Launching - Replace the MS at F8 to LGA-M MS	1	22-Jul-16	22-Jul-16	8													■ LG-A Launching - Replace the M
1022.1-4555	LG-A Launching - Deactivate the MS at F7C	1	23-Jul-16	23-Jul-16	8													■ LG-A Launching - Deactivate the
1022.1-5000	Bridge F5 - Upstand Wall & Bearing Installation at Pier 43 after Tendon Stressing of F3C	7	26-Jul-16	02-Aug-16	0													■ Bridge F5 - Upstand
1022.1-5005	Bridge F5 - W/B precast beams at Pier 43 to 44 (6 nos)	6	03-Aug-16	09-Aug-16	0													■ Bridge F5 -
1022.1-5010	Dismantle LG1	15	10-Aug-16	26-Aug-16	0													■
1022.1-5015	Bridge F5 - W/B Construct R.C. Deck	15	12-Aug-16	29-Aug-16	0													■
<b>10.6 - Tunnel Approach Ramp</b>		<b>80</b>	<b>01-Jun-15 A</b>	<b>24-Aug-16</b>	<b>177</b>													
<b>10.6.1 - Approach Ramp (Excluding Portion IIB)</b>		<b>80</b>	<b>01-Jun-15 A</b>	<b>24-Aug-16</b>	<b>177</b>													
<b>Bored Piles</b>		<b>54</b>	<b>01-Jun-15 A</b>	<b>23-Jul-16</b>	<b>203</b>													
1061-1120	Bored Piles Testing Approach Ramp (112 nos)	54	01-Jun-15 A	23-Jul-16	203													■ Bored Piles Testing Approach Ra
<b>Excavation &amp; ELS Works</b>		<b>80</b>	<b>21-Mar-16 A</b>	<b>24-Aug-16</b>	<b>30</b>													
1061-4900.1	Sheet Piling Works (WF1>S1:50m@1.5m/d)	25	11-Apr-16 A	20-Jun-16	30													■ Sheet Piling Works (WF1>S1:50m@1.5m/d)
1061-4900.2	Sheet Piling Works (WF1->S2:37m@1.5m/d)	25	20-Jun-16	20-Jul-16	30													■ Sheet Piling Works (WF1->S2:37m@
1061-4900.3	Sheet Piling Works (WF2->S3:25m@1.5m/d)	17	11-Apr-16 A	08-Jun-16	36													■ Sheet Piling Works (WF2->S3:25m@1.5m/d)
1061-4900.4	Sheet Piling Works (WF2->S4:23m@1.5m/d)	5	25-Apr-16 A	26-May-16	36													■ Sheet Piling Works (WF2->S4:23m@1.5m/d)
1061-4900.5	Sheet Piling Works (WF2->S5:51m@1.5m/d)	34	26-May-16	07-Jul-16	40													■ Sheet Piling Works (WF2->S5:51m@1.5m/d)
1061-4900.6	Predrilling Works (WF3>B2:25m@1.22m/d)	20	26-May-16	20-Jun-16	36													■ Predrilling Works (WF3>B2:25m@1.22m/d)
1061-4900.7	Predrilling Works (WF3>B3:19m@1.22m/d)	16	20-Jun-16	09-Jul-16	56													■ Predrilling Works (WF3>B3:19m@1.22m/d)
1061-4900.8	Predrilling Works (WF4>B1:46m@1.22m/d)	38	26-May-16	12-Jul-16	36													■ Predrilling Works (WF4>B1:46m@1.22m/d)
1061-4900.9	Sheet Piling Works (WF1>B2:25m@1.5m/d)	17	20-Jul-16	09-Aug-16	30													■ Sheet Piling
1061-4901.1	Sheet Piling Works (WF2>B1:46m@1.5m/d)	31	12-Jul-16	17-Aug-16	36													■ S

- Remaining Level of Effort
- Actual Level of Effort
- Actual Work
- Remaining Work
- Critical Remaining Work

**Contract HY/2009/19**  
**Three Months Rolling Programme (20 May to 19 Aug 2016)**

